

SCIENCE: Scientists

1ST & 2ND GRADE

Hypothesis: What do you think will happen?
I think that _____

Collect _____

Interpret Data: Write sentences explaining the data

food _____

Conclusions: _____
The hypothesis was _____

Color Swirl





Objective: to understand the effect dish soap has on fat

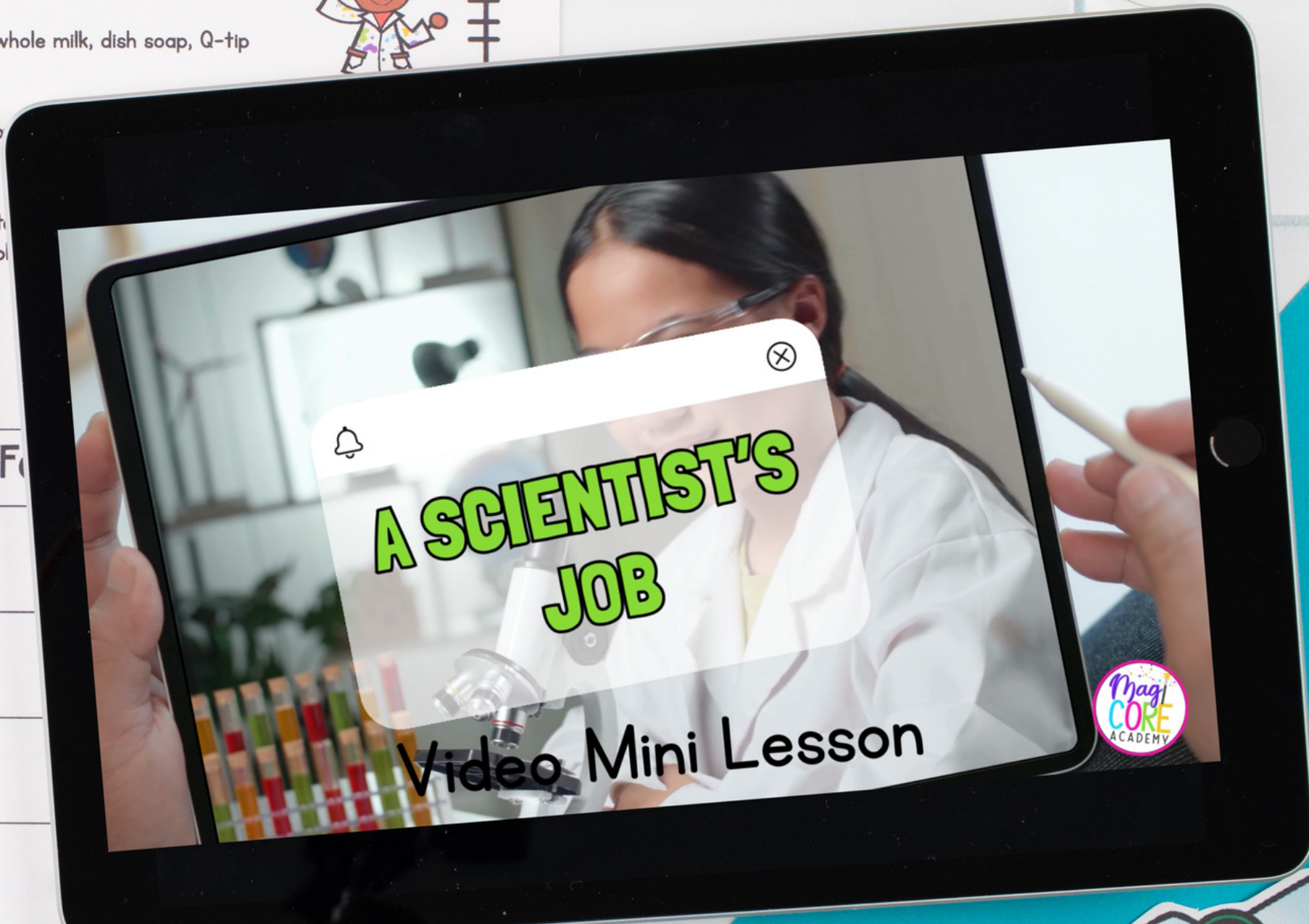
Materials: plastic or foam plate, food dye, whole milk, dish soap, Q-tip

Procedure:

1. Pour milk into the plate so it completely covers the plate.
2. Add 6-8 drops of different colored food dye.
3. Dip a Q-tip in dish soap.
4. Touch the Q-tip to the center of the plate.
5. Repeat the experiment with a different plate for the second trial.

Observe:

	Milk	Fat
		
		
		
		



A SCIENTIST'S JOB

Video Mini Lesson

Magi CORE ACADEMY



PRINTABLE & GOOGLE SLIDES

WHAT'S INSIDE?

PRINTABLE PDFs and **DIGITAL** Google Slides unit to teach all about scientists.



- Custom Video Lesson
- Reading Passage & Questions
- Mini Book & Vocabulary
- Worksheet & Activities
- Experiments & Explorations
- Quiz

Printable and Google Slides Included



VIDEO & BRAINSTORMING

- Custom video to teach content in an engaging format.
- Prior knowledge and video graphic organizers.



Name: _____ Date: _____

Show What You Know

Directions: Complete the following questions for the video you just watched.

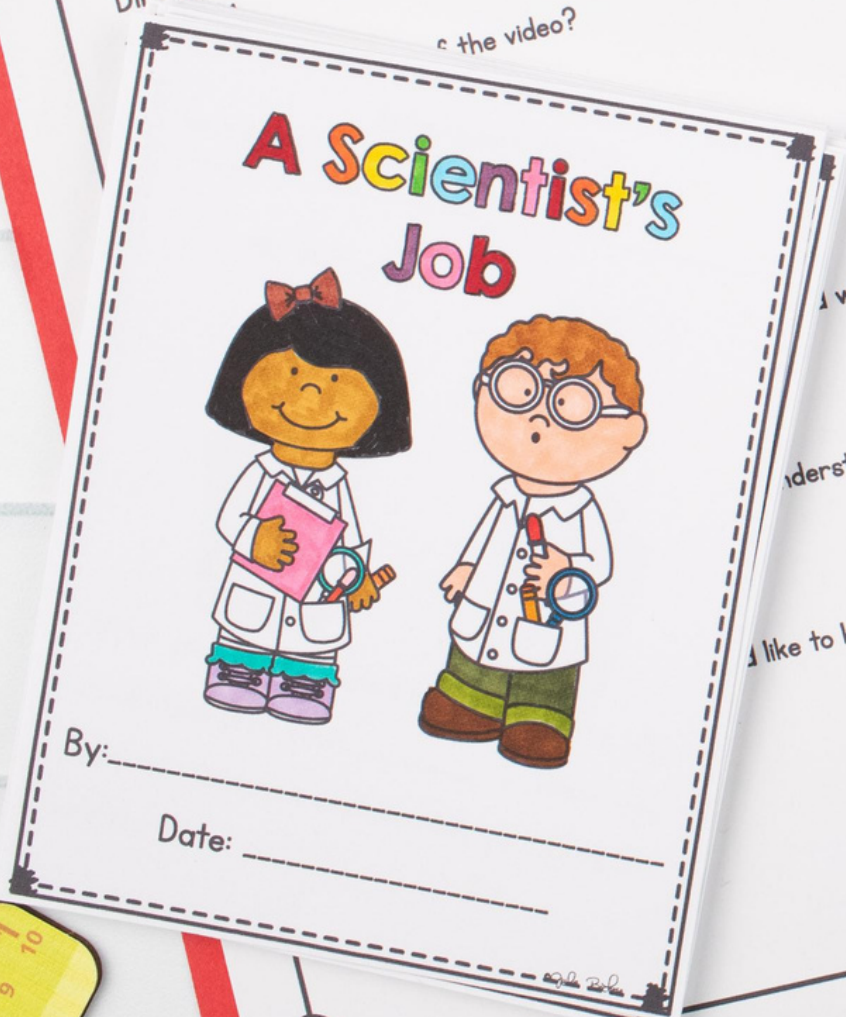
What did you learn from the video?

What did you understand? What was it?

What do you like to know more about? What was it?

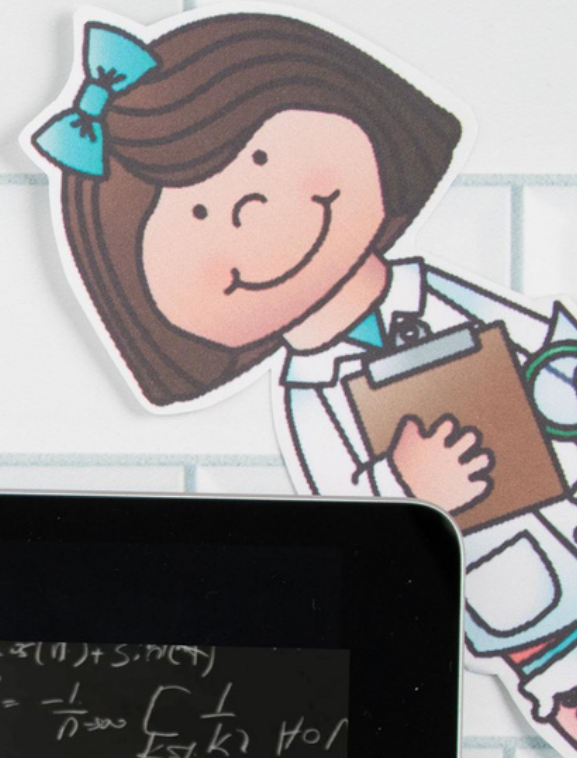
By: _____

Date: _____



Show What You Know

Complete the following prompts for the video you just watched.



PASSAGES & QUESTIONS

- Passage & Question Set.
- Same content as custom video.
- Reinforces concepts and vocabulary.

A Scientist's Job



Have you ever looked up at the stars and wondered what's beyond? Or watched a butterfly and asked yourself how it does? Well, that's what scientists do. They're curious, just like you, and they study the world and find out how things work.

Using the Scientific Method, Scientists have a way to find out things. They start by asking a question about anything they're curious about. They observe using their eyes, ears, nose, and taste to gather information. They're on the lookout for clues.

Sometimes, what scientists see or hear helps them make a hypothesis. Next, they decide on a procedure, which means they determine if their hypothesis is correct. It's important to only change one thing so they know exactly what makes the difference in what they are testing.

While doing experiments, scientists collect data. This is information or facts. Scientists might write numbers in a notebook, draw, or take notes. After the experiment, they have to infer, which means they use what they know to make sense of the data. This helps them understand what all their observations mean.



Procedure

Observe



Hypothesis



MINI BOOK

- Vocabulary Cards
- Fill-in-the-blank mini book to hold students accountable to content and concepts

Glossary

Fill in the word that matches each definition:
Word bank:
observe, conclusion, procedure, scientific method, data, technology, infer
the answer to your question
the information you collected

Make Observations

Write your observations about the planted seeds using your senses:

No Water

Collect Data

Date	Water	No Water

Interpret Data

What does the data mean?

No Water

Water



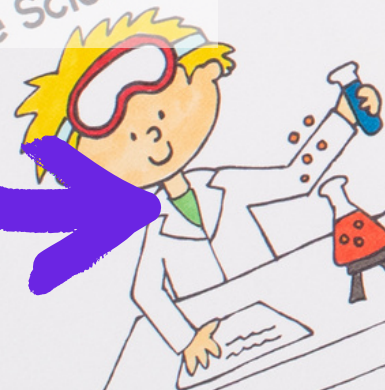
Reflect on Your Experiment

I wonder...

Ask a Question

Question: Do flowers need water to grow?

The Scientific Method



The Scientific Method is one way that scientists find answers. The Scientific Method has a set of steps. Scientists don't always do all of the steps. Sometimes, the steps are in a different order.

A Scientist's Job



By: _____

Date: _____

Observation



A turtle has a shell.



An elephant has _____

Inference

An elephant's trunk helps them reach food high in trees.

Scientists infer. When you _____ you use what you know to draw a conclusion. Scientists can use their senses to help them make an inference.



PRACTICE PAGES

- Video & Question Pages
- Mini Book
- Key Word Crossword Puzzle
- Flip Book
- Daily Scientist Log
- Color Swirl Lab
- Chemistry in a Bag Lab
- Molding Milk Lab
- Be A Scientist: Design and Experiment

Name: _____ Date: _____

Brainstorm Blocks

Directions: For the topic below, brainstorm facts as you can.

Scientific Method

Technology

Name: _____ Date: _____

Scientists Key Words Crossword

Directions: Use the clues below to solve the crossword puzzle.

1	2
3	
4	
5	
6	

ACROSS

1. Someone who studies the world and finds an
2. A test scientists do to learn if their guess works is correct.
3. A plan of steps a scientist designs to test a hypothesis.
4. Information or facts a scientist will collect.
5. The educated guess a scientist makes.
6. Tools, machines, or computers for a scientist to use in their work and to share results.
7. When scientists use what they know to make sense
8. What a scientist uses to observe.

Name: _____ Date: _____

Daily Scientist Log

Directions: Record your observations about the natural world each day. What questions might you have?

Date	Weather	Animal Life	Plant Life
---/--/---			
Observations			
Question			

By: _____ Date: _____

A Scientist's Job

By: _____ Date: _____



EXPERIMENTS

Interpret Data: Write sentences explaining the data you collected.



Drawing Conclusions:
My hypothesis was _____ (correct/incorrect).

Reflections: What questions do you have? What do you would want to do differently?

Color Swirl

Date: _____

Objective: to understand the effect dish soap has on fat

Materials: plastic or foam plate, food dye, whole milk, dish soap, Q-tip

Procedure:

1. Pour milk into the plate so it completely covers the bottom.
2. Add 6-8 drops of different colored food coloring to the milk in the center of the plate.
3. Dip a Q-tip in dish soap.
4. Touch the Q-tip to the center of the plate where the food dye is. Observe what happens.
5. Repeat the experiment with a different plate. Try putting the food dye around the edge of the plate for the second trial.



Observe:

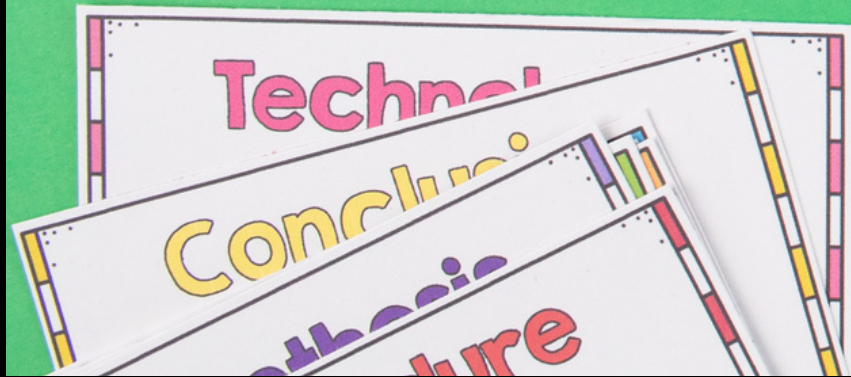
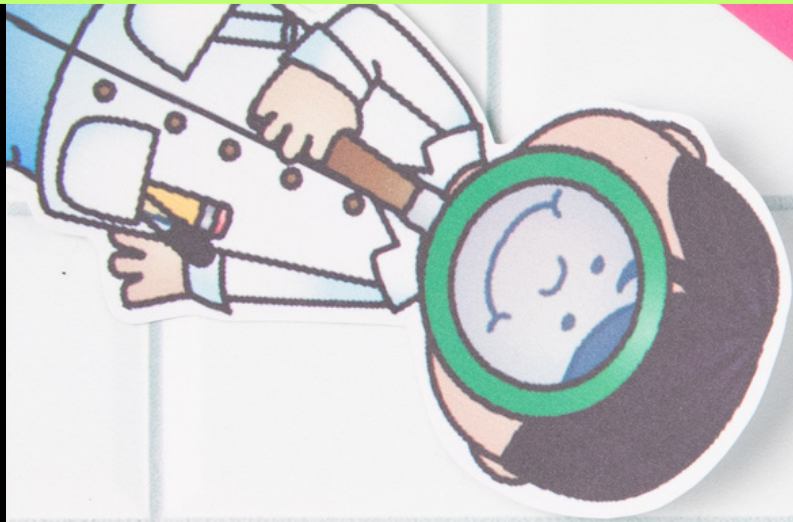
	Milk	Food Dye	Dish Soap

- Experiments that follow the Scientific Method

- Allow students to collaborate and explore!




QUIZ



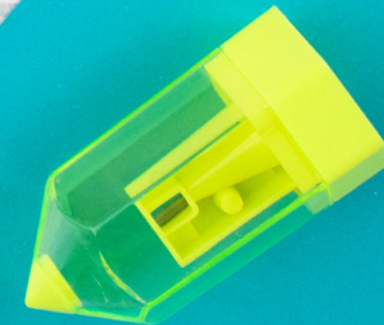
Name: _____ Date: _____

A Scientist's Job Quiz

1. What is a scientist? A scientist is a person who _____
2. Scientists observe using their five senses. What are they?
 - 1)
 - 2)
 - 3)
 - 4)
 - 5)
3. What could you infer about _____ shown below?

Inference: _____
4. Why is it important for scientists to repeat experiments?

© Kelly Bishop

Simple, quick quiz to ensure students understand basic concepts.



UPGRADE THEIR SKILLS!

SCIENCE Bundle

1st & 2nd Grade Print & Digital

The collage features various science topics with colorful illustrations and text. Topics include: A Scientist's Job, Science Tools, Matter, The Human Body, Force and Motion, Gravity, Magnets, Seasons, Rocks & Minerals, All About Soil, Air and Wind, Severe Weather, The Sun's Energy, Butterfly Lifecycle, Plant Life Cycle, and Living Organisms. Each card includes small images related to the topic, such as a scientist, a ruler, a magnet, a human body diagram, a force diagram, a gravity diagram, a magnet diagram, a human body diagram, a seasons diagram, a rocks and minerals diagram, an all about soil diagram, an air and wind diagram, a severe weather diagram, a sun diagram, a butterfly lifecycle diagram, a plant life cycle diagram, and a living organisms diagram. A circular logo for 'Magi CORE' is visible in the bottom right corner of the collage.

Love this unit, but need something more?
TRY THE BUNDLE!

