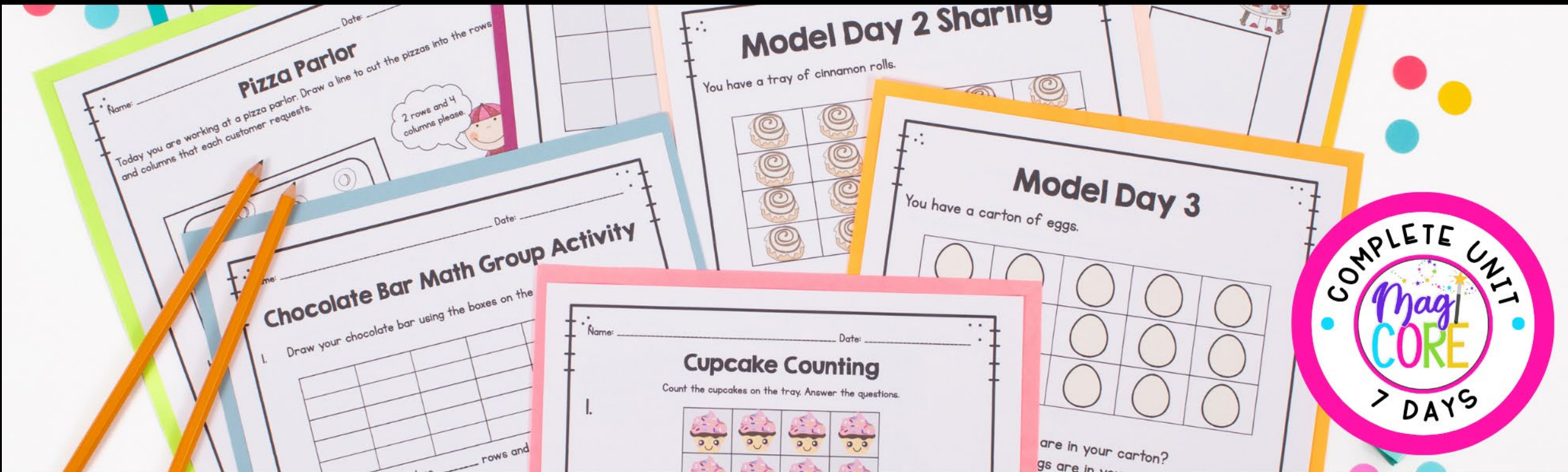


WORKSHEETS & PARTITIONING
CHOCOLATE BAR ACTIVITY

2nd Grade

PARTITIONING RECTANGLES



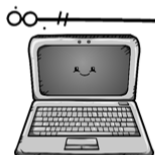
PRINTABLE • GOOGLE SLIDES

WHAT'S INSIDE?

Partitioning Rectangles

Table of Contents

1. Pedagogy
2. Lesson Plans
3. Vocabulary
4. Fractions Song
5. Partitioning Anchor Chart
6. How Many in All? Worksheet
7. Model Day 2 Sharing
8. Chocolate Bar Math Group Activity
9. Chocolate Bar Math Worksheet
10. Model Day 3
11. Bagel Cards Activity
12. Partition Your Class Activity Guide
13. Cupcake Counting Worksheet
14. Cookie Counting Worksheet
15. Donut Boxes Worksheet
16. Cupcake Baker Worksheet
17. Cookie Baker Worksheet
18. Donut Packer Worksheet
19. Pizza Parlor Worksheet
20. Brownie Bakery Worksheet
21. Partitioning Rectangle Scoot
22. Partitioning Rectangle Quiz



The Google Slides version of this resource requires that you make a copy of the resource to your own Google Drive.

[CLICK HERE](#) TO MAKE A COPY OF THIS RESOURCE TO YOUR GOOGLE DRIVE.

* You MUST have a Google account in order to access this resource. [Click HERE](#) if you need help setting up a Google account.

@Julie Beck

PRINTABLE PDFs and INTERACTIVE DIGITAL VERSIONS included

- Partitioning Rectangles
- Partitioning Rectangles Scoot, Chocolate Bar Activity, and Cumulative Quiz
- AND links to interactive digital versions

Printable & Digital Links Included



STANDARD ALIGNED ACTIVITIES

- Fun and aligned activities.
- Variety of worksheets and hands on engagement.
- Helps students work partitioning rectangles.
- Several hands on engagement activities to increase learning.



ORIGINAL SONG

- Original song and videos to keep students engaged!
- Reinforces prior understanding of fractions.
- Highlights Partitioning.
- Mirrors Anchor Charts.



ANCHOR CHART

- Anchor Chart to teach and break down the skill.
- Perfect to add into student folders or journals.
- Provides visual guidance on partitioning rectangles and how to use rows and columns.

Partitioning

We can divide objects and shapes into equal shares. We can partition a rectangle into rows and columns to make a set of equal shares!

Rows

3 Rows

Columns

5 Columns

3 Rows and 5 Columns makes 15 equal share boxes total

$3 + 3 + 3 + 3 + 3 = 15$

The anchor chart is decorated with a yellow border, colorful polka dots, and paper clips. A purple arrow points from the text 'Provides visual guidance on partitioning rectangles and how to use rows and columns.' to the chart. The chart itself shows a rectangle divided into 3 rows and 5 columns, with arrows indicating the direction of partitioning. At the bottom, there is a grid of 15 boxes and the equation $3 + 3 + 3 + 3 + 3 = 15$.

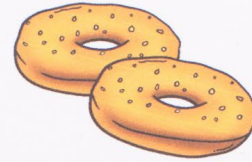
ENGAGING CENTER GAME

- Partitioning Rectangles Scoot Activity.
- Great for the review and center activities.
- Can be utilized and played throughout the year!
- Designed to be played individually, in pairs, or groups.



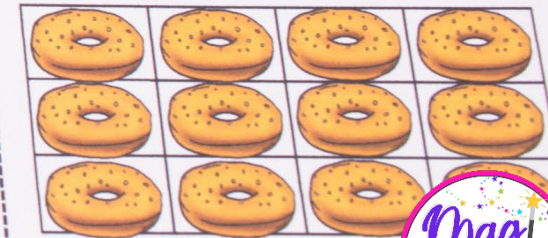
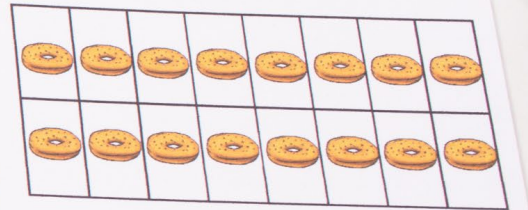
TAKE A PEEK

Bagel Cards Activity



Directions:

- Print and cut out enough bagel cards for your class.
- Place students in pairs.
- Pass out a bagel card to each pair.
- Direct each group to identify the number of rows, columns, and equal shares on their card.
- Have each group create two equations, one using rows and one using columns, to find the total number of bagels.
- Have a few groups share out their process and response.



AND ANOTHER PEEK

Name: _____

Date: _____

Quiz- Partition Rectangles

Count the fruit on the plate. Answer the questions.



1. How many rows are on the fruit plate? _____
2. How many columns are on the fruit plate? _____
3. How many total fruits are on the fruit plate? _____
4. Write an addition equation to show how many total pieces of fruit are on the fruit plate : _____
5. Cut the pizza into 3 columns and 2 rows.

