

# TOPICS & DETAILS LEXILE

Level: 260

Topic & details

Name \_\_\_\_\_

Date \_\_\_\_\_

## Harriet Tubman

Harriet Tubman was born in 1822. She lived in Maryland. She was a slave. At five years old, she took care of her own children. She was punished if the baby cried. When she was older, she worked in the fields.



\_\_\_\_\_ tells what this text is all about?  
\_\_\_\_\_ helped \_\_\_\_\_

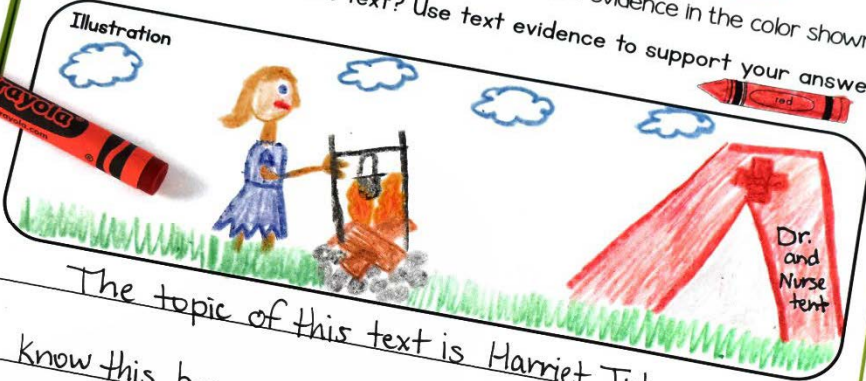
In 1844, Harriet ran away to Pennsylvania. It was there that she met Quakers. Harriet returned to Maryland to help other slaves. She made three more trips to the North. Harriet helped more than 300 slaves escape to freedom.

Topic & Details

Answer the following Questions. Underline the text evidence in the color shown.

1. What is the topic of this text? Use text evidence to support your answer.

Illustration



The topic of this text is Harriet Tubman.  
I know this because the title is Harriet Tubman. Also, Harriet Tubman is repeated throughout the text.

What are two details that support the topic?

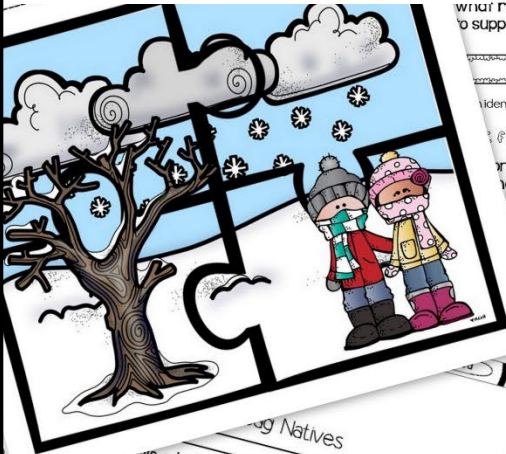
1. Harriet was born in 1822.

2. Harriet rescued 70 slaves.



Harriet Tubman

# Anchor Charts for Interactive Notebooks



RI.12-1 I can identify the main topic and retell key details of a text.

Find the **main topic** of a text? Words or phrases that are repeated should be a word or phrase.

Find **details** that support the main topic?

What **reasons or details** does the author use to support the topic?

**The Wampanoag**

The Wampanoag are Native Americans. They live in England. They were here before Pilgrims.

The Wampanoag lived in the forest and valleys during the winter. They lived by water during the rest of the year. They grew corn. They grew beans. They grew squash. Men would hunt for fish.

Pilgrims came to Massachusetts. The Wampanoag helped them. They taught them how to grow food. They taught them to get sick from the Pilgrims. The Pilgrims built a village. The Wampanoag were pushed away from the land.

**King Philip's War**

King Philip became the leader of the Wampanoag. King Philip fought against the Pilgrims. This caused King Philip's War. Many Wampanoag died in the war. Wampanoag people were sold into slavery after the war.

Today, the Wampanoag pass down their history. They tell their history to their children. They have ceremonies. They speak their language. They hunt and fish. They sing and dance.

**Thunder and Lightning**

Lightning happens during a storm. It is electricity. Lightning can flow between parts in a cloud. It can flow between two clouds. It can flow between a cloud and the ground. Lightning can hit things. This is a lightning strike. Lightning is harmful. If lightning strikes, heat goes through the object. People can get struck by lightning. They get hurt. Lightning comes with thunder. Thunder is a sound. It is not harmful. If you hear thunder, lightning is close. It can strike anytime.

3. Which sentence best tells what this text is about?

a. People need to be careful of lightning.

b. It is important to learn about thunder and lightning.

c. Lightning is the flow of electricity between two objects.

## 12 Level Leveled Non Fiction Passages in 2-nd-3rd Grade Text Complexity Band

**Cloud to Ground Lightning Strike**

**Tree that was struck by lightning**

**The Amish Way of Life**

The Amish are people who live in America. They live in Pennsylvania. Amish speak Pennsylvania Dutch. This is their own language. Over 2 million Amish live in the United States. The population of Amish is growing.

Amish have rules. People can't use electricity. They don't use telephones. They can't drive cars. Amish use horses and buggies. They wear long dresses with aprons. Men wear pants, shirts, and hats. They wear plain colors. If a member does not follow the rules, they are shunned. This means other members won't talk to them or throw them out of their community.

**TEST: The Tower of London**

The Tower of London is an old castle. It is in London. This castle was built over 900 years ago. It has a lot of history.

The Tower of London was a palace. The Tower of London is surrounded by walls. There is a moat around the walls. Kings and queens lived in the Tower of London.

The castle was used for war. Guns were put around the castle. Weapons were put in the Tower of London.

The Tower of London was a prison. Elizabeth I was a prisoner here before she was queen. The tower was a prison for spies. Bombs hit the castle during war. The castle was fixed and reopened to the public. The Tower of London. Over the years, the Tower of London has been used for many things.

3. Which sentence best tells what this text is about?

a. The Amish live in Pennsylvania.

b. The Amish don't use electricity.

c. The Amish wear long dresses and aprons.

d. The Amish speak Pennsylvania Dutch.

1. What is the topic of this text? Use evidence from the text to answer.

2. How was the Tower of London built?

3. How was the Tower of London used for?

4. How was the Tower of London used for?

**Anaconda Snakes**

Anaconda snakes are amazing. They scare people. Anacondas are in books and movies.

Anacondas are boa constrictors. There are a few kinds of anacondas. The most common kind is the green anaconda. The green anaconda is the largest snake in the world. Anacondas grow as long as 20 feet. They weigh more than 12 inches around. Green anacondas have orange stripes on their heads. They have an orange stripe on their heads. This helps them swim.

**Test formatted just like practice passages**

# TOPICS & DETAILS

1st grade

## Table of Contents

\*This product includes 12 Lexile<sup>®</sup> leveled passages in the 1<sup>st</sup> Grade Level Text Complexity Band.

1. Topic, Main Idea, Details Anchor Chart (2 pgs.)
2. Main Idea Puzzle (1 pg.)
3. The Tower of London- 260L
4. How to Make Pancakes- 290L
5. Brown Bears- 320L
6. Harriet Tubman- 320L
7. Thunder and Lightning- 340L
8. The Wampanoag- 350L
9. The Amish Way of Life- 350L
10. Anaconda Snakes- 360L
11. The Super Bowl- 380L
12. Ryan Hreljac Makes His Mark- 420L
13. Topic, Main Idea, Details Test
  - Mercury- 320L
  - Labor Day- 390L



# ABOUT LEXILE LEVELS



MagiCore Learning, LLC is a certified Lexile<sup>®</sup> Partner. These texts are officially measured and approved by Lexile and MetaMetrics<sup>®</sup> to ensure appropriate rigor and differentiation for students.

The Lexile Framework<sup>®</sup> for Reading measures are scientific, quantitative text levels. When the Lexile of a text is measured, specific, measurable attributes of the text are considered, including, but not limited to, word frequency, sentence length, and text cohesion. These are difficult attributes for humans to evaluate, so a computer measures them.

Common Core State Standards uses Lexile level bands as one measure of text complexity. Text complexity ranges ensure that students are college and career ready by the end of 12<sup>th</sup> grade. Lexile measures help educators scaffold and differentiate instruction, as well as monitor reading growth.

Grade Band	Lexile <sup>®</sup> Bands Aligned to Common Core Expectations
K-1	190L-530L
2-3	420L-820L
4-5	740L-1,010L
6-8	1,185L-1,385L

Keep in mind when using any leveled text that many students will need scaffolding and support to reach text at the high end of their grade band. According to Appendix A of the Common Core Standards, "It is important to recognize that scaffolding often is entirely appropriate. The expectation that scaffolding will occur with particularly challenging texts is built into the Standards' grade-by-grade text complexity expectations, for example. The general movement, however, should be toward decreasing scaffolding and increasing independence both within and across the text complexity bands defined in the Standards."

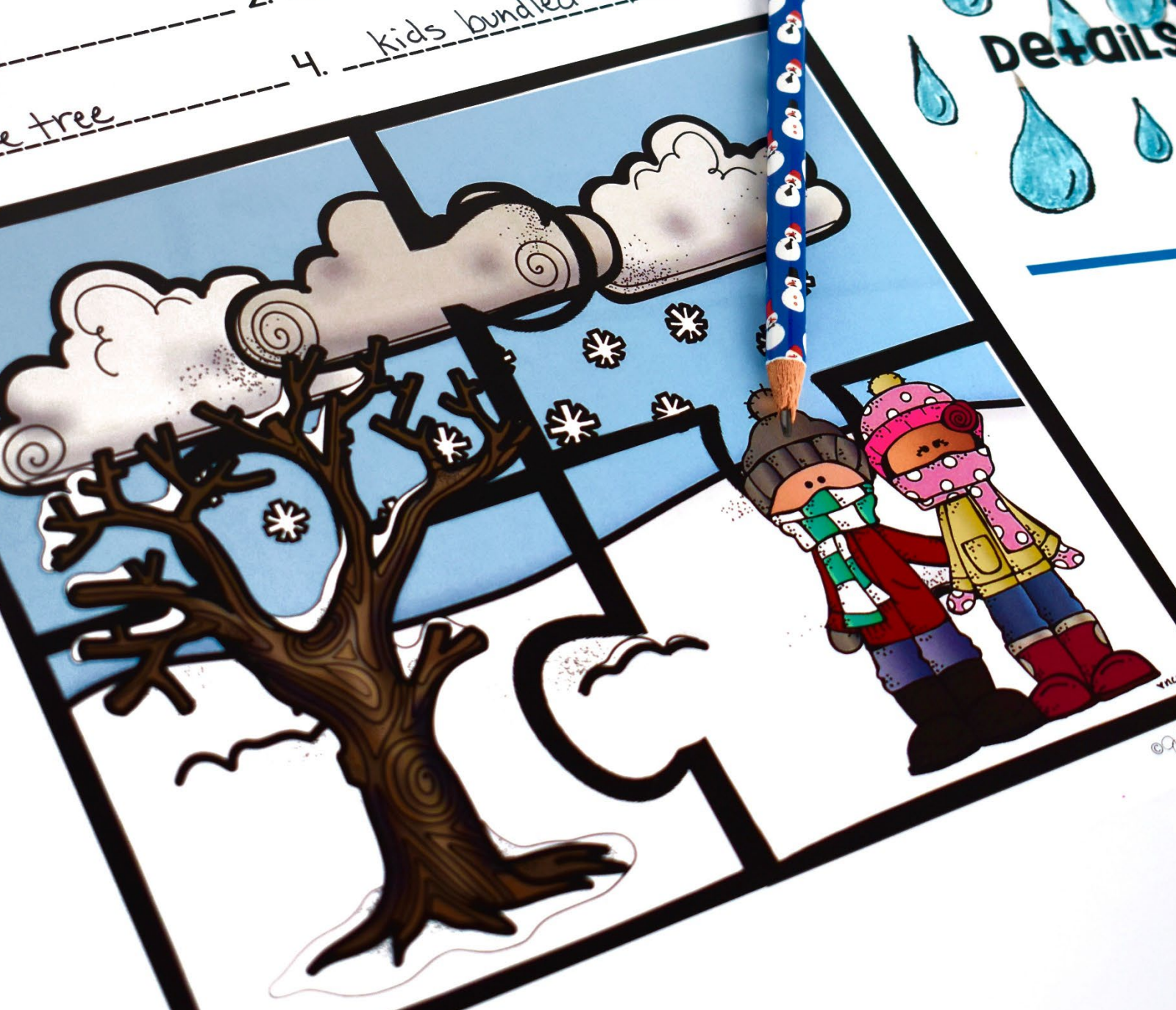


# TOPIC and Details

HOW DO I find the main idea?

What is the whole puzzle about in 1-2 words?  
Winter

What is each piece of the puzzle showing?  
1. tree  
2. snow  
3. clouds  
4. kids bundled up





Topic & Details

Name: \_\_\_\_\_

Date: \_\_\_\_\_

## Brown Bears

Brown bears are large. They are predators. A predator hunts animals. Brown bears live in many places. They live in Europe. They live in Asia. They live in North America. Brown bears are not always brown. In India, they are red. In North America, they can be cream. They can also be black. Brown bears have long and thick fur. They have large claws. Brown bears can't climb trees. Their claws are dull. Brown bears are many sizes. They can weigh 120 to 1,500 pounds.



This map shows where brown bears live.



Topic & Details

3. Which sentence describes brown bears?

- a. Brown bears live in Africa.
- b. Brown bears are predators.
- c. Brown bears are always brown.



4. Where do brown bears live?

- a. Brown bears live in Africa.
- b. Brown bears live in South America.
- c. Brown bears live in North America.



5. Why can't brown bears climb trees?

- a. Brown bears don't have sharp claws.
- b. Brown bears are too small to climb trees.
- c. Brown bears are too large to climb trees.



6. How much do brown bears weigh?

- a. Brown bears weigh 120 pounds.
- b. Brown bears weight between 220-150 pounds.
- c. Brown bears weigh between 120-1,500 pounds



Topic & Details

3. Which ser

a The Tc

b The T

c The T

4. When

Th

5. Wh

a

b

c

6. '

@

b

peop

can



Th

was buil

The

palace. E

walls. Tl

walls. K



Pri

Tl

before

B

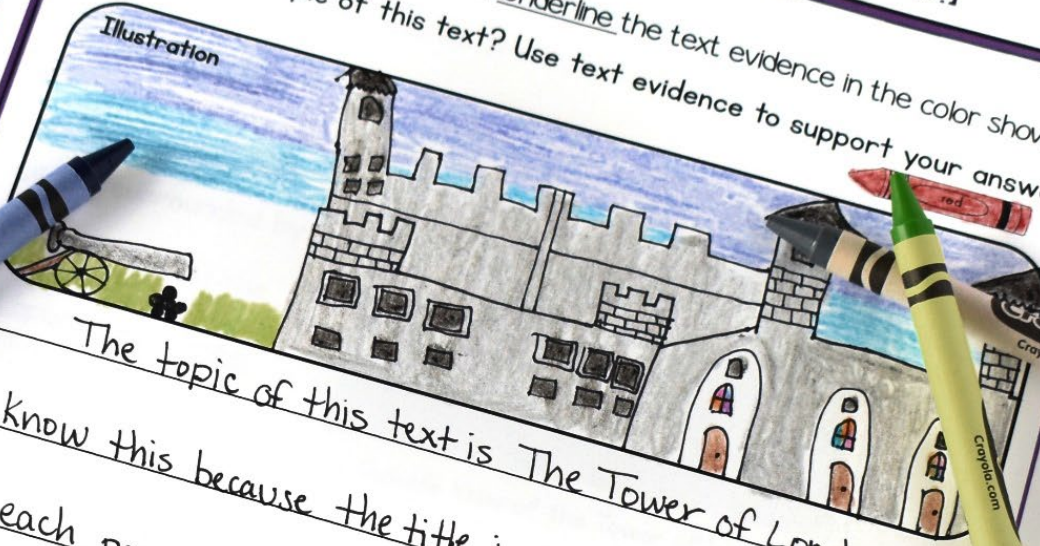
the pt

2

Topic & Details

Answer the following Questions. Underline the text evidence in the color shown.  
1. What is the topic of this text? Use text evidence to support your answer.

Illustration



The topic of this text is The Tower of London.

I know this because the title is The Tower of London.  
Also, each paragraph is about the tower.

2. What are two details that support the topic?

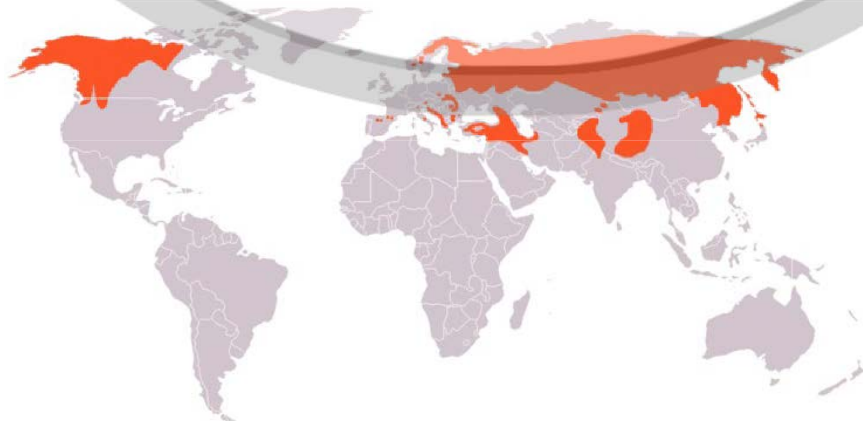
1. The Tower of London was a palace.

2. The Tower of London was used for war.



# Brown Bears

Brown bears are big. They are predators. Predators hunt animals. Brown bears live in many places. They live in Europe. They live in Asia. They live in North America. Brown bears are not always brown. In India, they are red. In North America, they can be cream. They can also be black. Brown bears have long and thick fur. They have big claws. Brown bears can't climb trees. Their claws are dull. Brown bears are many sizes. They can weigh 120 to 1,500 pounds.

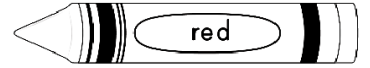


**This map shows  
where brown  
bears live.**

Topic & Details

Answer the following Questions. Underline the text evidence in the color shown.

1. What is the topic of this text? Use text evidence to support your answer.



Illustration



2. What are two details that support the topic?



1.

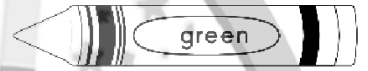
2.

3. Which sentence describes brown bears?



- a. Brown bears live in Africa.
- b. Brown bears are predators.
- c. Brown bears are always brown.

4. Where do brown bears live?



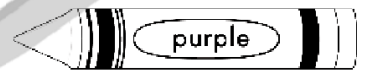
- a. Brown bears live in Africa.
- b. Brown bears live in South America.
- c. Brown bears live in North America.

5. Why can't brown bears climb trees?



- a. Brown bears don't have sharp claws.
- b. Brown bears are too small to climb trees.
- c. Brown bears are too large to climb trees.

6. How much do brown bears weigh?



- a. Brown bears weigh 120 pounds.
- b. Brown bears weight between 220-150 pounds.
- c. Brown bears weigh between 120-1,500 pounds.

# Terms of Use



## How Can I Use This Resource?

Thank you for trusting MagiCore. Our mission is to create resources that support teachers and promote student success. Please note that this resource is licensed for use by a single teacher in a classroom setting. If you need to use this resource with more than one teacher and/or across multiple classrooms, additional licenses are available at a discount. You can purchase additional licenses by visiting your TPT "Purchases" page and then selecting "Download Additional Licenses" or by contacting me at [julie@magicorelearning.com](mailto:julie@magicorelearning.com).



Good to Go



Not O.K.

- Use this resource personally or with your own children.
  - Use this resource in your own classroom with your students.
  - Provide this resource to your students to use at your instruction.
  - Print and/or copy for use in your own classroom.
  - Provide printed pages to a substitute teacher with the sole purpose of instructing your students.
  - Share with your students via a secure document portal or electronic learning platform that requires individual user verification and limits access to only the students in your own classroom (e.g. Google Classroom).
  - Review this resource with others with the sole purpose of recommending it to others for purchase, provided you share one of the links below:
- Share with others to use personally.
  - Share with others to use in another classroom.
  - Print or copy any page(s) and distribute them to other teachers or other classrooms.
  - Publish or host online in a manner where any of the material is accessible to anyone who is not a student in your own classroom, including but not limited to personal, classroom, or district websites that are accessible to the general public.
  - Use this resource commercially (e.g. Outschool).
  - Publish, sell, or otherwise distribute this product to anyone in manner inconsistent with these terms of use.

<https://magicorelearning.com/>

<https://www.teacherspayteachers.com/Store/Magicore>

© Copyright 2016, 2022. All rights reserved. The unlicensed reproduction or distribution of this product is strictly prohibited. Permission is granted to the original purchaser or licensee to make copies to use with students and/or to assign to students digitally providing it is only available to students assigned directly to the purchaser. Using this product in any manner that makes it accessible to the general public is strictly forbidden. Commercial use, including but not limited to online or in person classes, is prohibited. Contact [julie@magicorelearning.com](mailto:julie@magicorelearning.com) for commercial licensing information. Sharing without permission or hosting online in a public manner is a violation of the Digital Millennium Copyright Act (DMCA). These terms may be updated at any time. You can see the most up to date Terms of Use at

<https://magicorelearning.com/terms-of-use>.

# Let's Connect!

[www.magicorelearning.com](http://www.magicorelearning.com)



<https://www.teacherspayteachers.com/Store/Magicore>



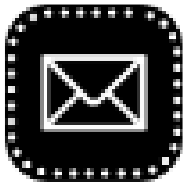
<https://www.facebook.com/MagicoreLearning/>



<https://www.instagram.com/magicorelearning/>



<https://www.pinterest.com/magicorelearning/pins/>



Julie@magicorelearning.com

Looking for more?



# CREDITS

[www.amazingclassroom.com](http://www.amazingclassroom.com)

[https://commons.wikimedia.org/wiki/File:Helen\\_Keller\\_Birthplace\\_House.jpg](https://commons.wikimedia.org/wiki/File:Helen_Keller_Birthplace_House.jpg)

[https://commons.wikimedia.org/wiki/File:Great\\_white\\_shark\\_size\\_comparison.svg](https://commons.wikimedia.org/wiki/File:Great_white_shark_size_comparison.svg)

[https://commons.wikimedia.org/wiki/File:Loggerhead\\_sea\\_turtle.jpg](https://commons.wikimedia.org/wiki/File:Loggerhead_sea_turtle.jpg)

