

## CONTEXT CLUES



TRUSTED BY OVER  
**15,000**  
TEACHERS



Level:  
490

Context Clues

Name: \_\_\_\_\_

Date: \_\_\_\_\_

## A Day in My Life: Spain

My name is Esperanza Balon. I am eight years old. I live in Madrid, Spain with my mama, papa, grandma, and my little brother Carlos.



This is me!

**8:00 a.m.:** I usually wake up around 8:00 a.m.. I eat cereal with milk and watch a show on TV. After breakfast, I get ready for school.

**9:00 a.m.:** My mom walks Carlos and me to school. It takes us about 20 minutes.



My School

**12:00 p.m.:** This is my favorite time of day- lunch time! Carlos and I go home for lunch with my family. My papa even comes home for lunch. My mama cooks a massive meal that includes an appetizer, main course, and dessert. My favorite is seafood paella. Paella is a dish of rice and seafood. After lunch, we take a small siesta, or nap.

**9:30 a.m.:** School starts. My teacher is Mrs. Sanchez. There are 29 kids in my class. We learn social studies, reading, writing, arithmetic, art, and physical education.



Seafood Paella

**2:30 p.m.:** It's time to go back to school. We finish our lessons and end the day with education.



# WHAT'S INCLUDED?

TWELVE 2<sup>nd</sup> & 3<sup>rd</sup> Grade **DIGITAL** and **PRINTABLE** PDF nonfiction passages & **TWO** assessments!

- Aligned with 2<sup>nd</sup> & 3<sup>rd</sup> Grade Lexile Levels
- Includes 2 Context Clues Anchor Charts
- Students can highlight the text for easy comprehension

Created  
with  
**GOOGLE  
SLIDES**

## CONTEXT CLUES

*2<sup>nd</sup> & 3<sup>rd</sup> grade*

### Table of Contents

\*This product includes 12 Lexile® leveled passages in the 2<sup>nd</sup>-3<sup>rd</sup> Grade Common Core Text Complexity Band (the range for 2<sup>nd</sup>-3<sup>rd</sup> grade is 420L-820L). Each passage and question set is two pages long.

1. Word Detective Steps Anchor Chart (2 pgs.)
2. Types of Context Clues Anchor Chart (2 pgs.)
3. Be a Word Detective Search (1 pg.)
4. Context Clue Practice Cards (1 pg.)
5. How Chocolate Is Made- 540L
6. The Life Cycle of a Chicken- 560L
7. A Day in My Life, Spain- 570L
8. How to Play Go Fish- 600L
9. Green Machine Smoothie- 730L
10. The Black Widow Spider- 730L
11. The History of Basketball- 740L
12. The Ancient City of Pompeii- 770L
13. Record Breaker: Winter Vinecki- 780L
14. The Great Milk Debate- 800L
15. Context Clues Test
  - The Star of the Sea- 730L
  - The Star of the Sea- 780L





# NONFICTION PASSAGES

Color-coded highlighting supports student comprehension. In Google Slides, students can highlight as they read!



Context Clues

Name: \_\_\_\_\_ Date: \_\_\_\_\_

## How Chocolate Is Made

A favorite treat of many people is chocolate. Whether it is in cookies, cakes, candies, or drinks, **most people love this decadent and delicious sweet.** Have you ever wondered where chocolate comes from?

Chocolate begins by growing in cocoa pods. Farmers **harvest** these pods twice a year. **When harvested, the cocoa pods are picked and cut open.** A white pulp that has the cocoa beans inside is taken out. Next, the pulp is **fermented** in containers. **This is when the pulp and beans are left out to break down.** Fermentation helps develop the flavor of the chocolate.



Farmer harvesting cocoa pod

After five to seven days of fermentation, the cocoa beans are dried in the sun. **Next, the beans are shipped all over the world to chocolatiers.**



White pulp inside cocoa pod

Once the chocolatier receives the beans, he or she **roasts** them. **Some chocolatiers roast their beans in ovens. Next, the cocoa beans have their shells removed. This process is called winnowing.** The cocoa nib is left. Then, the cocoa nibs are ground into a paste. Soon after, sugar is added to the chocolate. Milk powder can also be added to make milk chocolate. Afterward, the chocolate is **tempered**. Tempering is when the temperature of the chocolate is raised and lowered to create crystals. This makes the chocolate shiny and firm. Most chocolatiers have a machine that does this.



Cocoa beans being processed

Lastly, the chocolate is poured into a mold. The mold can be shaped like chocolate bar, hearts for Valentine's Day, or a bunny for Easter.

After reading, students type their answers in the text boxes using text evidence.

### Context Clues

1. What is the meaning of "decadent" as it is used in the first paragraph of the passage?

- a. sour
- b. bitter
- c. delightful
- d. chocolaty



2. Read these sentences from paragraph 2 of the passage:

Farmers **harvest** these pods twice a year. When harvested, the cocoa pods are picked and cut open.

What does the word "harvest" mean in paragraph 2? (Pick all that apply.)

- a. chop
- b. pick
- c. gather
- d. grow

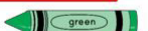


3. What is the meaning of the word "fermented" in paragraph 2?



Students type their answers right in the text box.

4. What is the meaning of the word "chocolatiers" in paragraph 3?



5. Read these sentences from paragraph 4 of the passage:

Once the chocolatier receives the beans, he or she **roasts** them. Some chocolatiers roast their beans in ovens.

What does the word "roast" mean in paragraph 4?



6. What is the meaning of the word "winnowing" in paragraph 4?

- a. The chocolate is poured into a mold.
- b. The shells are removed from the cocoa bean.
- c. Sugar and milk powder are added to the cocoa paste.
- d. The temperature of the chocolate is raised and lowered.



# ASSESSMENTS

Color coded highlighting can also be done on the assessments!

780L

Context Clues Name: \_\_\_\_\_ Date: \_\_\_\_\_

**Test: Carnivorous Plants**

It is a well-known fact that many animals eat \_\_\_\_\_




730L

Context Clues Name: \_\_\_\_\_ Date: \_\_\_\_\_

**Test: The Star of the Sea**

Did you know that starfish are actually not fish at all? This popular sea creature is an **invertebrate** because **it does not have a backbone**.




7 Legged Starfish

There are about **2,000 different species** of starfish. They usually have 5 arms, but some types have up to 40 arms! Some can be smooth, bumpy, or spiny. Many have bright colors. They have tube feet that help them attach to and climb on rocks and coral. Tube feet help them move. Some starfish cannot swim. Their mouths are located underneath their body in the center. We know that starfish do not have brains and also do not have blood. Their **nervous systems** are spread throughout their bodies. **Their limbs communicate movement throughout their bodies.**

Amazingly, starfish can **regenerate**, or **regrow**, limbs that are damaged or lost. Starfish may even shed arms to defend themselves from predators. Predators include snails, crabs, sea turtles, otters, and birds.

Starfish feed on whatever is available to them. Some of their **diet** includes **worms, snails, and larvae**. **Some species of starfish eat their prey outside of their bodies!** Their stomachs can come out to digest food. Then, the stomach goes back into their bodies.



Starfish eating a mussel

Starfish have appeared in legends across cultures. Even though some starfish can be poisonous, some cultures eat these creatures.

Context Clues

1. What is the meaning of "invertebrate" as it is used in the first paragraph of the passage?

a. a fish  
b. a creature  
c. an animal with a backbone  
d. an animal without a backbone

2. Read these sentences from paragraph 2 of the passage:  
*There are about 2,000 different species of starfish. They usually have 5 arms, but some types have up to 40 arms!*

What does the word "species" mean in paragraph 2? (Pick all that apply.)

a. fish  
b. kinds  
c. types  
d. varieties

3. What is the meaning of the word "nervous systems" in paragraph 2?

Students type their answers right in the text box.

4. What is the meaning of the word "regenerate" in paragraph 3?

5. Read these sentences from paragraph 4 of the passage:  
*Starfish feed on whatever is available to them. Some of their diet includes worms, snails, and larvae.*

What does the word "diet" mean in paragraph 4?

6. What is the meaning of the word "prey" in paragraph 4?

a. food  
b. limbs  
c. snails  
d. stomach

This resource also includes TWO tests with different Lexile Levels for student assessment.



# CONTEXT CLUES

2<sup>nd</sup> & 3<sup>rd</sup> grade

## Table of Contents

\*This product includes 12 Lexile® leveled passages in the 2<sup>nd</sup>-3<sup>rd</sup> Grade Common Core Text Complexity Band (the range for 2<sup>nd</sup>-3<sup>rd</sup> grade is 420L-820L). Each passage and question set is two pages long.

1. Word Detective Steps Anchor Chart (2 pgs.)
2. Types of Context Clues Anchor Chart (2 pgs.)
3. Be a Word Detective Search (1 pg.)
4. Context Clue Practice Cards (1 pg.)
5. How Chocolate Is Made- 540L
6. The Life Cycle of a Chicken- 560L
7. A Day in My Life, Spain- 570L
8. How to Play Go Fish- 600L
9. Green Machine Smoothie- 730L
10. The Black Widow Spider- 730L
11. The History of Basketball- 740L
12. The Ancient City of Pompeii- 770L
13. Record Breaker: Winter Vinecki- 780L
14. The Great Milk Debate- 800L
15. Context Clues Test
  - The Star of the Sea- 730L
  - Carnivorous Plants- 780L







# ABOUT LEXILE LEVELS



MagiCore Learning, LLC is a certified Lexile® Partner. These texts are officially measured and approved by Lexile and MetaMetrics® to ensure appropriate rigor and differentiation for students.

The Lexile Framework® for Reading measures are scientific, quantitative text levels. When the Lexile of a text is measured, specific, measurable attributes of the text are considered, including, but not limited to, word frequency, sentence length, and text cohesion. These are difficult attributes for humans to evaluate, so a computer measures them.

Common Core State Standards uses Lexile level bands as one measure of text complexity. Text complexity ranges ensure students are college and career ready by the end of 12<sup>th</sup> grade. Lexile measures help educators scaffold and differentiate instruction as well as monitor reading growth.

Grade Band	Lexile® Bands Aligned to Common Core Expectations
K-1	N/A
2-3	420L-820L
4-5	740L-1010L
6-8	1185L-1385L

Keep in mind when using any leveled text that many students will need scaffolding and support to reach text at the high end of their grade band. According to Appendix A of the Common Core Standards, "It is important to recognize that scaffolding often is entirely appropriate. The expectation that scaffolding will occur with particularly challenging texts is built into the Standards' grade-by-grade text complexity expectations, for example. The general movement, however, should be toward decreasing scaffolding and increasing independence both within and across the text complexity bands defined in the Standards."



## Word Detectives Use Context Clues

**Definition (meaning)**  
The concept, or idea, was new to her.

**Examples**  
 \*Like The data, such as reading level growth, can be found in student binders.  
 \*Such as  
 \*OR

**Synonyms (Same)**  
The turtle sauntered slowly through the grass.

**Antonyms (Opposite)**  
The plate wasn't brittle because it did not break when she dropped it on the floor.

**Word Parts**  
Is there a helpful PREFIX, SUFFIX, OR ROOT WORD?

helpful  
rewrite  
pretest

*© Julie Beebe*

## Be a Word Detective

**Context Clues**- Clues in a text that figure out what a word means.

**Where Are Context Clues?**

- Look right next to the word.
- Look in the sentence before the word.
- Look in the sentence after the word.

**Next...**

- \_\_\_\_\_ the unknown word with word.
- Ask yourself, "Does the new word make \_\_\_\_\_?"

*© Julie Beebe*

# STUDENT ANCHOR CHARTS



# 10 LEXILE LEVELED PASSAGES

Level:  
770

Context Clues

Name: \_\_\_\_\_

Date: \_\_\_\_\_

## The Black Widow Spider

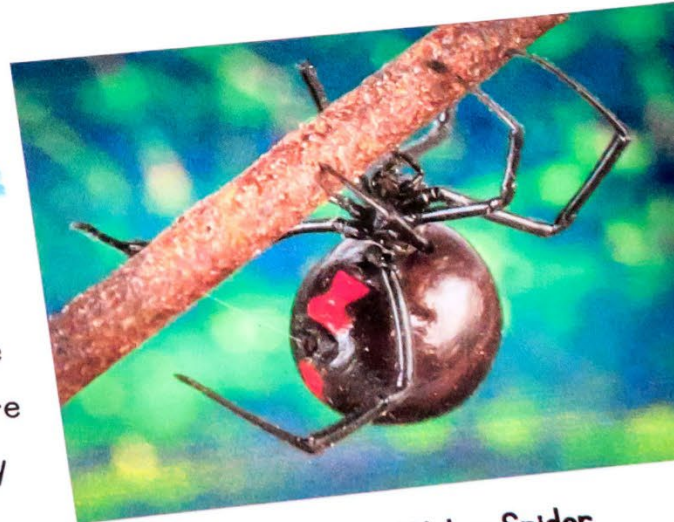
Black widow spiders are one of the most **dreaded** spiders in North America. **This is because they are venomous, or poisonous.** They are called black widows because the females usually eat their mates!

Black widow spiders are **arachnids**. Arachnids are animals with eight legs. This spider is easily recognized because it usually has a red or orange hourglass shape on its stomach. Females have shiny, dark black bodies and are about 1-2 inches long. Males are a lighter black. They are about half the size of females. Some males have red spots on their backs.

Black widows live in **moderate** climates all around the world. **Areas with cold winters are too cold for them.** They can be found in the southern and western parts of the United States. They are also found in South America, Southern Europe, Asia, Australia, and Africa.

Black widows eat other arachnids and various insects. Their diet includes flies, ants, mosquitoes, caterpillars, cockroaches, and grasshoppers. They trap their prey in webs. Then, they use their feet to wrap their prey in silk. Next, they injure their prey with their fangs. Finally, they inject digestive enzymes into the insects. The insect's organs liquefy, and the spiders suck up the liquid. The black widow can live for months without eating. Some can live up to a year without food!

Black widows are one of the most venomous spiders to **reside** in North America. **Their venom can be fifteen times stronger than rattlesnake venom!** While this sounds **treacherous**, these predators will only strike humans if they are disturbed. Their bites are painful, but if they are treated, they rarely cause death.



Black Widow Spider



# STANDARDS-BASED QUESTIONS ALIGNED TO STATE TESTING



## Context Clues

1. What is the meaning of "dreaded" as it is used in the first paragraph of the passage?

- a. loved
- ☒ b. feared
- c. famous
- d. interesting



2. Read these sentences from paragraph 1 of the passage:

*Black widow spiders are one of the most **dreaded** spiders in North America. They are **venomous**, or poisonous.*

What does the word "venomous" mean in paragraph 1? (Pick all that apply.)

- ☒ a. toxic
- b. Scary
- c. frightful
- d. fascinating



3. What is the meaning of the word "arachnids" in paragraph 2?

Arachnids are animals with 8 legs.



4. What is the meaning of the word "moderate" in paragraph 3?

Moderate means mild. Black widows can not live in places that are too cold.



5. Read this sentence from paragraph 5 of the passage:

*Black widows are one of the most venomous spiders that **reside** in North America.*

What does the word "reside" mean in paragraph 5?

Reside means to live.



6. What is the meaning of the word "treacherous" in paragraph 5?

- a. safe
- b. amazing





# 2 PASSAGE ASSESSMENT

# The Black Widow Spider

Black widow spiders are one of the most **dreaded** spiders in North America. This is because they are **venomous**, or poisonous. They are called black widows because the females usually eat their mates!

Black widow spiders are **arachnids**. Arachnids are animals with eight legs. This spider is easily recognized. It usually has a red or orange hourglass shape on its stomach. Females have shiny, dark black bodies and are about 1-2 inches long. Males are a lighter black. They are about half the size of females. Some males have red spots on their backs.

Black widows live in **moderate** climates all around the world. Areas with cold winters are too cold for them. They can be found in the southern and western parts of the United States. They are also found in South America, Southern Europe, Asia, Australia, and Africa.

Black widows eat other arachnids and various insects. Their diet includes flies, ants, mosquitoes, caterpillars, cockroaches, and grasshoppers. They trap their prey in webs. Then, they use their feet to wrap their prey in silk. Next, they injure their prey with their fangs. Finally, they inject digestive enzymes into the insects. The insect's organs liquefy. The spiders suck up the liquid. The black widow can live for months without eating. Some can live up to a year without food!

Black widows are one of the most venomous spiders to **reside** in North America. Their venom can be fifteen times stronger than rattlesnake venom! While this sounds **treacherous**, these predators will only strike humans if they are disturbed. Their bites are painful, but if they are treated, they rarely cause death.



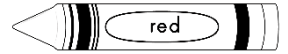
Black Widow Spider



## Context Clues

1. What is the meaning of "dreaded" as it is used in the first paragraph of the passage?

- a. loved
- b. feared
- c. famous
- d. interesting

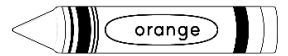


2. Read these sentences from paragraph 1 of the passage:

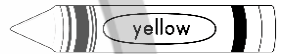
*Black widow spiders are one of the most **dreaded** spiders in North America. This is because they are **venomous**, or **poisonous**.*

What does the word "venomous" mean in paragraph 1? (Pick all that apply.)

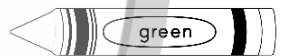
- a. toxic
- b. Scary
- c. frightful
- d. fascinating



3. What is the meaning of the word "arachnids" in paragraph 2?



4. What is the meaning of the word "moderate" in paragraph 3?



5. Read this sentence from paragraph 5 of the passage:

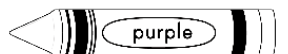
*Black widows are one of the most venomous spiders to **reside** in North America.*

What does the word "reside" mean in paragraph 5?



6. What is the meaning of the word "treacherous" in paragraph 5?

- a. safe
- b. amazing
- c. exciting
- d. dangerous



# Terms of Use



## How Can I Use This Resource?

Thank you for trusting MagiCore. Our mission is to create resources that support teachers and promote student success. Please note that this resource is licensed for use by a single teacher in a classroom setting. If you need to use this resource with more than one teacher and/or across multiple classrooms, additional licenses are available at a discount. You can purchase additional licenses by visiting your TPT "Purchases" page and then selecting "Download Additional Licenses" or by contacting me at [julie@magicorelearning.com](mailto:julie@magicorelearning.com).



Good to Go



Not O.K.

- Use this resource personally or with your own children.
  - Use this resource in your own classroom with your students.
  - Provide this resource to your students to use at your instruction.
  - Print and/or copy for use in your own classroom.
  - Provide printed pages to a substitute teacher with the sole purpose of instructing your students.
  - Share with your students via a secure document portal or electronic learning platform that requires individual user verification and limits access to only the students in your own classroom (e.g. Google Classroom).
  - Review this resource with others with the sole purpose of recommending it to others for purchase, provided you share one of the links below:
- Share with others to use personally.
  - Share with others to use in another classroom.
  - Print or copy any page(s) and distribute them to other teachers or other classrooms.
  - Publish or host online in a manner where any of the material is accessible to anyone who is not a student in your own classroom, including but not limited to personal, classroom, or district websites that are accessible to the general public.
  - Use this resource commercially (e.g. Outschool).
  - Publish, sell, or otherwise distribute this product to anyone in manner inconsistent with these terms of use.

<https://magicorelearning.com/>

<https://www.teacherspayteachers.com/Store/Magicore>

© Copyright 2015, 2020. All rights reserved. The unlicensed reproduction or distribution of this product is strictly prohibited. Permission is granted to the original purchaser or licensee to make copies to use with students and/or to assign to students digitally providing it is only available to students assigned directly to the purchaser. Placing this product in any manner that makes it accessible to the general public is strictly forbidden. Commercial use, including but not limited to online or in person classes, is prohibited. Contact [julie@magicorelearning.com](mailto:julie@magicorelearning.com) for commercial licensing information. Sharing without permission or hosting online in a public manner is a violation of the Digital Millennium Copyright Act (DMCA). These terms may be updated at any time. You can see the most up to date Terms of Use at

<https://magicorelearning.com/terms-of-use>.



# Let's Connect!

[www.magicorelearning.com](http://www.magicorelearning.com)



<https://www.teacherspayteachers.com/Store/magicore>



<https://www.facebook.com/MagiCoreLearning/>



<https://www.instagram.com/magicorelearning/>



[https://www.pinterest.com/magicorelearning/\\_shop/](https://www.pinterest.com/magicorelearning/_shop/)



[Julie@magicorelearning.com](mailto:Julie@magicorelearning.com)

Looking for more?



# CREDITS

<http://melonheadzillustrating.blogspot.com/>

<http://creeksideteachertales.blogspot.com>

<http://teacherspayteachers.com/store/digital-swirl-creations>

[https://commons.wikimedia.org/wiki/File:Asterias\\_rubens\\_\(eating\).jpg](https://commons.wikimedia.org/wiki/File:Asterias_rubens_(eating).jpg)

">via Wikimedia Commons</a>

[www.amazingclassroom.com](http://www.amazingclassroom.com)

