



Common
CORE
Kingdom

Date: _____

SSMENT

sources of energy. The
such as wind power and

Date: _____

UES: WORD PARTS

tion about the **bold** print word.

Date: _____

TEXT CLUES: SYNONYMS

ge. Answer the question about the **bold** print word.

s to make flubber, but most recipes include water, glue, and borax. These
together in a bowl or on a tray.

lended as it is used in the text?

text best supports your answer. → A?

ent ways to make flubber"

include water, glue, and borax"

are **blended**"

her in a bowl"

t while they hibernate. After these long months out food, the hungry bears
hing they can find.

of ravenously as it is used in the text?

way

things

the text best supports your answer to Part A?

ernate"

ng months"

ars **ravenously** eat"

everything they can find"



Word Detectives Use Context Clues



Definition (meaning)

The concept, or idea, was new to her.

Examples

*Like The data, such as reading level growth, can be found in student binders.

*Such as

*OR

Synonyms

(Same)

The turtle **sauntered** slowly through the grass.

Antonyms

(Opposite)

The plate **wasn't** brittle because it **did** not break when she dropped it on the floor.

Word Parts

Is there a helpful PREFIX, SUFFIX, OR ROOT WORD?

helpful
rewrite
pretest

©Jale Backes

CONTEXT CLUES

4th & 5th grade

Table of Contents

1. How to use this resource
2. Types of context clues anchor chart
3. Context clues targeted practice for definitions, examples, synonyms, antonyms, and word parts
4. Context Clues assessment



How to Use This Resource

This resource is a great review of context clues practice. It is also a great remedial intervention for students who need more explicit, targeted practice before applying this skill to books and passages.

This resource is broken up into five different types of context clues: definitions, examples, synonyms, antonyms, and word parts.

Teaching

- Create a teaching anchor chart displaying the five types of context clues. Review one example of each type.
- Model how to read a portion of text and search for context clues before, after, and around the word. Underline the clues found. It is important to point out that the author does not always include context clues and sometimes the author may include more than one.

Guided Practice

- Allow student pairs to go on a scavenger hunt to search for different types of context clues in their books. Have students notate what type of context clue the author uses.

Independent Practice

- Assign one type of context clue practice page per day. Review student answers to clear up misconceptions and reinforce the skill.

Assessment

- After students have had ample practice with all types of context clues, give students the mixed practice. This can also be used as an assessment.

Next Steps

- After this targeted practice, students should be able to apply their context clues skills to their everyday reading. Students can practice honing this skill with my [context clues passages](#) and in their independent reading.

Name: _____ Date: _____

CONTEXT CLUES: DEFINITION

Directions: Read the passages. Answer the questions about the **bold print** words.

Koalas are often inaccurately called koala “bears.” Koalas are not actually bears at all, but **marsupials**, or pouched mammals. After giving birth, female koalas carry their babies in their pouches for about six months.

PART A:

What is the meaning of marsupial as it is used in the text?

- a. Baby
- b. Pouched mammal
- c. Bears
- d. Female mammals

PART B:

Which phrase from the text best supports your answer to Part A?

- a. “Koalas are often inaccurately called koala ‘bears.’”
- b. “Koalas are not actually bears”
- c. “Koalas are... **marsupials**, or pouched mammals.”
- d. “female koalas carry their babies..”

If you want to figure out a complicated math problem, you need to learn the language for describing math ideas, **algebra**. Algebra is used to change a question like “How much does one pencil cost if two pencils cost twenty cents?” into a math equation like “ $20/2 = x$.”

PART A:

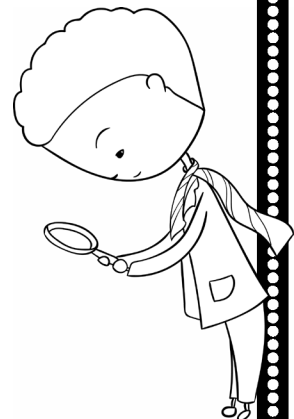
What is the meaning of algebra as it is used in the text?

- a. A complicated math problem
- b. The language for describing math ideas
- c. A question
- d. The cost

PART B:

Which phrase from the text best supports your answer to Part A?

- a. “to figure out a complicated math problem, you need to learn the language”
- b. “the language for describing math ideas, **algebra**”
- c. “Algebra is used to change a question”
- d. “a math equation like ‘ $20/2 = x$ ’”



Name: _____ Date: _____

CONTEXT CLUES: WORD PARTS

Directions: Read the passages. Answer the questions about the **bold** print words.

The kings of France used several different flags. It was only after France became a democracy that it began using the **tricolor** flag that is so familiar today.

PART A:

What is the meaning of **tricolor** as it is used in the text?

- a. Using tricky colors
- b. Trying to use colors
- c. Using three colors
- d. Shaped like a collar

PART B:

Write the meanings of the word parts that support your answer to Part A:

- a. Tri-: _____
- b. Color: _____

As the world has changed, so have people's jobs. Some jobs, such as airplane pilot and photographer, did not even exist two hundred years ago. Other jobs that used to be common have almost disappeared, like blacksmith and **furrier**.

PART A:

What is the meaning of **furrier** as it is used in the text?

- a. A person who can run far
- b. A person who walks behind a horse to clean up
- c. A person who has long hair
- d. A person who sells animal furs

PART B:

Write the meanings of the word parts that support your answer to Part A:

- a. Fur: _____
- b. -ier: _____



Name: _____ Date: _____

CONTEXT CLUES: WORD PARTS

Directions: Read the passages. Answer the questions about the **bold** print words.

The ancient city of Troy is very famous for its story of love and war. Long ago, a prince from Troy ran away with a queen from Sparta. This caused a terrible, **multiyear** war between the two cities.

PART A:

What is the meaning of **multiyear** as it is used in the text?

- a. Looking like a mule's ear
- b. Having many ears
- c. Lasting for many years
- d. Lasting less than a year

PART B:

Write the meanings of the word parts that support your answer to Part A:

- a. **Multi-**: _____
- b. **Year**: _____

In the United States, **speedometers** are marked in miles and kilometers. In countries that just use the metric system, speedometers are marked only in kilometers.

PART A:

What is the meaning of **speedometers** as it is used in the text?

- a. Speed limits
- b. Devices that measure speed
- c. Swimsuit sizes
- d. Machines where you pay for parking

PART B:

Write the meanings of the word parts that support your answer to Part A:

- a. **Speed**: _____
- b. **-meter**: _____



Name: _____ Date: _____

CONTEXT CLUES: ASSESSMENT

Directions: Read the passages. Answer the questions about the **bold print** words.

Voters are worried about the fact that the US uses mostly **nonrenewable** sources of energy. The government has set aside money for research on better kinds of energy such as wind power and solar energy.

PART A:

What is the meaning of **nonrenewable** as it is used in the text?

- a. You can't use it outside
- b. You can't keep getting new ones
- c. You can't make it cheaper
- d. You can't get it in your country

PART B:

Write the meanings of the word parts that support your answer to Part A:

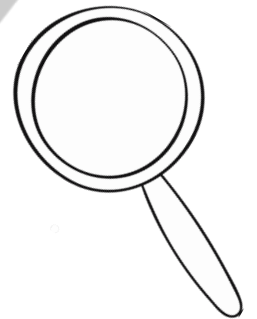
- a. **Non-:** _____
- b. **Re-:** _____
- c. **New:** _____
- d. **-able:** _____

The United States is an interesting and unusual country because its people belong to many different **ethnic groups**, such as Native American, Latino, African American, Asian American, Pacific Islander, and European American.

PART A:

What is the meaning of **ethnic groups** as it is used in the text?

- a. A group of people with a common cultural background
- b. A group of countries near each other on a map
- c. Parts of the country
- d. Places with similar weather



PART B:

Which phrase from the text best supports your answer to Part A?

- a. "**ethnic groups**, such as Native American, Latino, African American, Asian American, Pacific Islander, and European American"
- b. "African American, Asian American, Pacific Islander, and European American"
- c. "an interesting and unusual country because its people belong to many... **ethnic groups**"

Terms of Use



How Can I Use This Resource?

Thank you for your purchase! My mission is to create resources that support teachers and promote student success. Please note that this resource is licensed for use by a single teacher in a classroom setting. If you need to use this resource with more than one teacher and/or across multiple classrooms, additional licenses are available at a discount. You can access them by visiting your TPT "Purchases" page and then selecting "Download Additional Licenses" or by contacting julie@commoncorekingdom.com.



Good to Go:

- Use this resource personally or with your own children.
- Use this resource in your own classroom.
- Provide this resource to your students to use at your instruction.
- Print and/or copy for use in your own classroom.
- Provide print version(s) of specific pages within the product to a substitute teacher with the sole purpose of instructing your students.
- Assign to your students via a secure document portal or electronic learning platform that requires individual user verification and limits access to only the students in your own classroom (e.g. Google Classroom).
- Review this product with others with the sole purpose of recommending the product, provided you include the link below:

<https://www.commoncorekingdom.com/shop>



Not O.K.

- Give to others to use personally.
- Give to others to use in another classroom.
- Give to parents to use with their children outside of your lessons.
- Print or copy this item to share with other teachers or other classrooms.
- Publish or host online in a manner where the material is accessible to others besides the students in your own classroom, including but not limited to personal, classroom, or district websites that are accessible by the general public.
- Use this resource commercially (e.g. Outschool).
- Publish, sell, or otherwise disseminate the product to anyone.

© Copyright 2019, 2020. All rights reserved. The reproduction of this product is strictly prohibited. Permission is granted to the original purchaser or licensee to make copies to use with students and/or to assign to students digitally providing it is only available to students assigned directly to the purchaser. Placing this product on the internet so that it is accessible to the general public is strictly forbidden. Commercial use, including but not limited to online or in person classes, is prohibited. Contact julie@commoncorekingdom.com for commercial licensing information. Posting without permission is a violation of the Digital Millennium Copyright Act (DMCA). These terms may be updated at any time. You can see the most up to date Terms of Use at <https://commoncorekingdom.com/terms-of-use>.

Created By: **Bochese Law** TPT Seller Solutions & More at BocheseLaw.com

Let's Connect!

www.commoncorekingdom.com



<https://www.teacherspayteachers.com/Store/Common-Core-Kingdom>



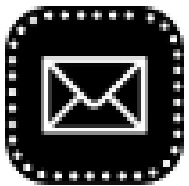
<https://www.facebook.com/CommonCoreKingdom/>



<https://www.instagram.com/commoncorekingdom>

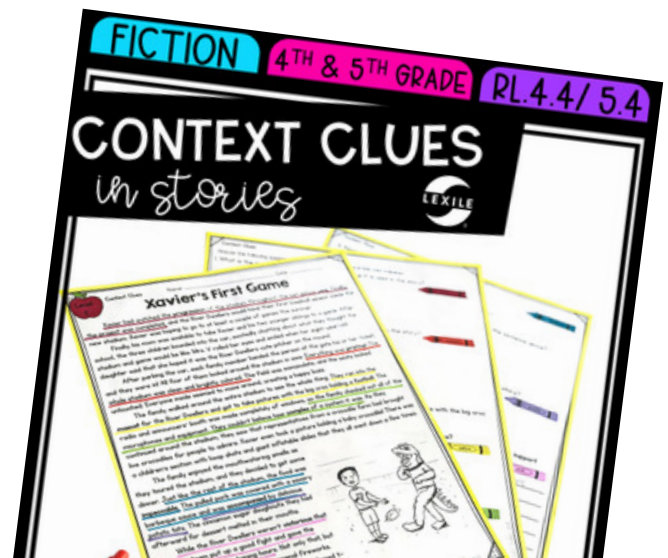


<https://www.pinterest.com/cckingdom/pins/>



Julie@commoncorekingdom.com

Looking for more?



CREDITS

Anatomy of a Dolphin

https://commons.wikimedia.org/wiki/File:Dolphin_Anatomy.svg

