

A vibrant night scene of the Cinderella Castle at Disney World's Magic Kingdom. The castle is illuminated with warm lights, and its blue-roofed spires stand out against a dark blue sky filled with stars and colorful fireworks. The overall atmosphere is magical and celebratory.

DISNEY WORLD

MAGIC
KINGDOM

VIRTUAL field trip





DREAM TO REALITY



Aerial view of Magic Kingdom

Magic Kingdom was the first Disney park. The attractions here are dedicated to fairy tales and Disney characters. Cinderella's Castle is located at the heart of the park.

Magic Kingdom is divided into six themed "lands." It is designed like a wheel, with the center in front of Cinderella's Castle. Pathways spoke out from the center across the 107 acres of the park that lead to these six lands. The Walt Disney World Railroad circles around the entire 1.5-mile perimeter of the park and makes stops at Main Street, USA, Frontierland, and Fantasyland.

Iconic rides including It's a Small World and Jungle Cruise are found at Magic Kingdom.

What is the name of the attraction at the heart of the park?

How many lands are at Magic Kingdom?

What are two of the iconic rides at Magic Kingdom?

SUBMIT

Travel to Disney World

Learn about the history of Magic Kingdom and the improvements throughout the years.



TRACK YOUR PROGRESS

Collect stickers as you explore Magic Kingdom!





THE MAN BEHIND THE MOUSE

Walt Disney drew cartoons and made movies. He created the Disney theme parks. Children have enjoyed Disney's creations since the 1920s.

Walt Disney made some of the most familiar characters. Mickey Mouse first appeared in a short film called "Steamboat Willie". Minnie Mouse and Daisy Duck appeared in a comic strip in 1930. Other beloved characters, including Pluto and Goofy, also appeared in comic strips.

Throughout his career, Disney created over 50 movies. The first was Snow White and the Seven Dwarfs. It came out in 1937. Some other Disney classics include Cinderella, The Lion King, and Frozen.

There are Disney theme parks around the world. Millions of tourists visit these parks each year. Disney opened his first theme park called Disneyland in 1955. There are now parks in Florida, Paris, Tokyo, and Hong Kong. Walt Disney has entertained generations of people through his characters, films, and theme parks.



How many movies did Disney create?



When did the first park open?



Where are there parks now?

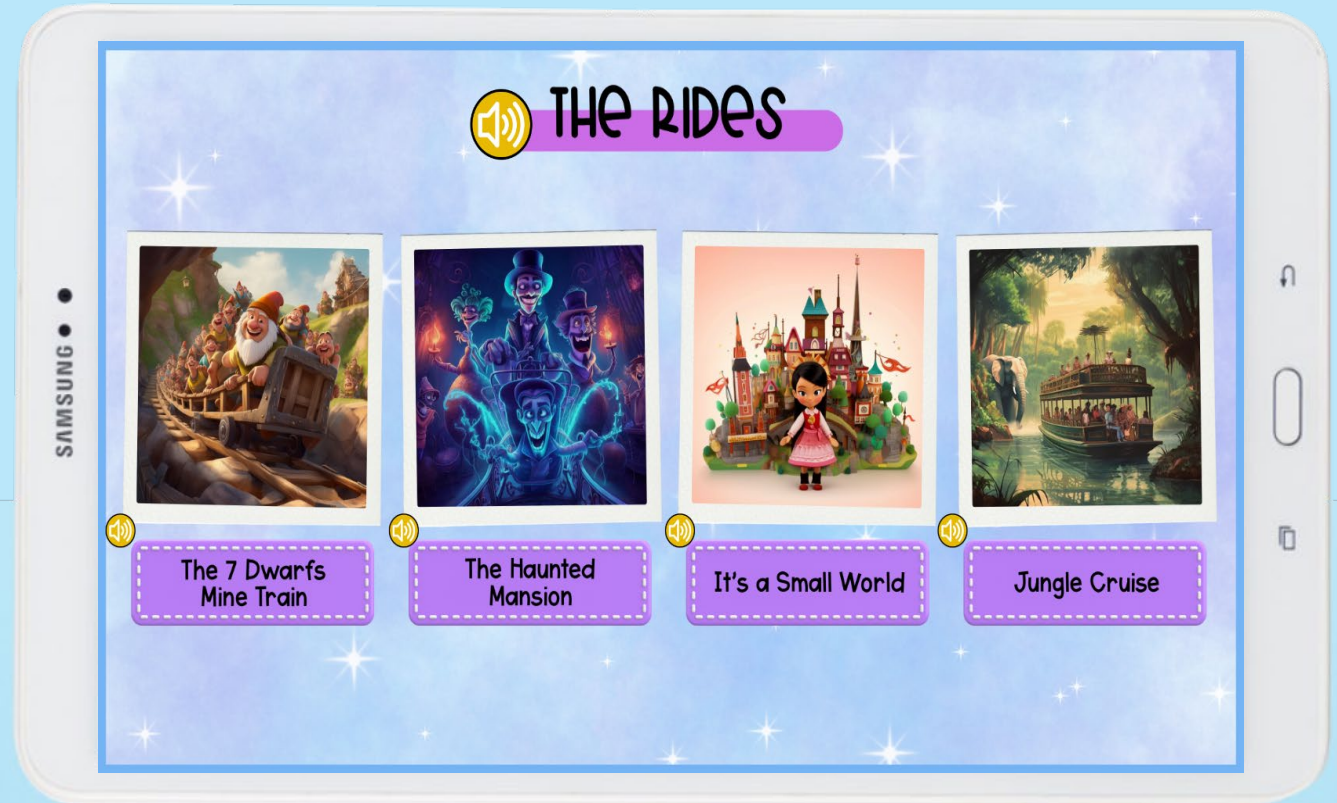
SUBMIT

MEET WALT DISNEY

Meet the man behind the world famous attraction.

HAVE FUN WITH THE RIDES

Experience some of the rides
at Disney World!



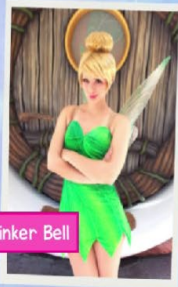


MAGICAL ENCOUNTERS

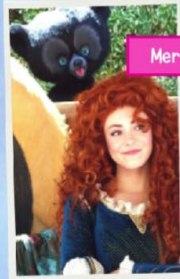
Character meet and greets at Disney World began as a way to bring beloved Disney characters to life and provide guests with memorable interactions. The concept originated with the opening of Disneyland in 1955, where Walt Disney himself understood the magic of guests meeting their favorite characters in person. This idea quickly became a cherished tradition and was eventually introduced at Disney World. Today, character meet and greets offer an opportunity for guests to meet and take photos with iconic Disney characters, creating cherished memories and bringing the enchantment of Disney stories to life. Whether it's meeting Mickey Mouse, Cinderella, or Elsa, character meet and greets have become a beloved and integral part of the Disney World experience, allowing guests of all ages to step into the world of magic and imagination.



Click on each photograph to meet the character:



Tinker Bell



Merida



Which character would you most want to meet? Why?

type your text here

SUBMIT

MAGICAL ENCOUNTERS

Meet some of the beloved characters from Disney.

Suggested Uses

- Assign in Google Classroom or SeeSaw
- Whole Class Activity
- Small groups or center
- Early Finisher
- Incentive or Fun Friday

Google Slides and SeeSaw



Looking for More? Save with our Social Studies Bundle!

Visit Salem, MA,
The Titanic,
Washington, DC,
...and more!



Click the picture
to preview!