

2nd & 3rd Grade

# Main Idea Magic

## Wizarding Escape Room



PRINTABLE • GOOGLE • WEBSCAPE™





Welcome, my friend, to my Magical Wizarding School. I am Merlin.

We will be testing your magical capabilities to determine your future at our school.

You must complete four challenges to unlock the secret code and graduate from wizarding school.

1. Find the enchanted spell book.
2. Find the magical wand.
3. Create a potion.
4. Defeat the evil sorcerer Alwina.

After each challenge, collect the item you need and lock it in your library.



# Step into a world of wizardry

Students won't realize they are practicing Main Idea skills! They will be immersed in the storytelling and our original videos as they complete reading comprehension challenges.

Learn more!



## 1. Find the Main Idea

Surya is the Hindu god of the sun. He is also the sun itself. Surya gives energy and light and he made space and the planets. He also rules the seasons. That makes him important to farmers. He is also a god and brings good luck.



## Find the Main Idea

lays her tiny white egg on a milkweed leaf. The egg hatches in four to six days. A caterpillar with yellow, black, and orange stripes comes out. The hungry caterpillar feasts on milkweed leaves. Next, it joins itself to a sturdy plant stem. It curls up and sheds its skin. It is a beautiful green.



## 4. Find the Supporting Details

Waffles are yummy breakfast treats. They have a grid pattern that hold syrup and butter. Did you ever wonder who invented waffles? Waffles were first made by people in Greece. They were just flat cakes roasted over a fire. Years later those flat cakes were changed by adding toppings, and other things to make the waffles more delicious. People began to use a waffle plate with a grid. This became the waffle iron of today. Many countries make waffles their own special way. In some places they are eaten for breakfast or dessert. The Dutch brought waffles to America in the 1700s. The people in America poured on maple syrup and began enjoying them for breakfast!

Which detail could be added to the paragraph?

- In France, waffle batter is made with yeast.
- More people like waffles than pancakes.

## Find the Main Idea

Almost everyone loves hot chocolate. Hot chocolate is a warm drink made with melted chocolate or cocoa powder mixed with warm milk or water and sugar. Did you know this drink has been around for about 3,000 years? The Maya people made the first chocolate drink in 500 BC. They served their chocolate drink cold. The Mayas ground cocoa seeds into a paste. This was mixed with water, cornmeal, and chili peppers. The drink was poured from cup to cup and got a thick foam on top. The Aztec people took this drink and added honey.

# 4 Reading Challenges

- Challenges focused on main idea and details
- Each challenge takes about 20-30 minutes
- 18 short nonfiction passages, 1 long nonfiction passage
- Multiple choice questions
- Passages in 2<sup>nd</sup>-3<sup>rd</sup> Grade Text Complexity band (420L-820L)
- Passages and questions are scaffolded

Learn more!





# 1. Find the Main Idea

Surya is the Hindu god of the sun. He is also the sun itself. Surya gives energy and light and he rules space and the planets. He also rules the seasons. He makes him important to farmers. He is also a god and brings good luck. Many shops in India have a picture of the sun near their front door for good luck. Surya is an important god to Hindu people.

What is the main idea?

- a. Surya rules the universe.
- b. Surya is important to farmers.
- c. Surya is a god and brings good luck.
- d. Surya is an important god to Hindu people.

## 3. Find the Supporting Details

In a time when most women worked as nurses or teachers, Katherine Johnson went to college to study math. She went to West Virginia State College. Katherine loved numbers. She also wondered about space travel. Those things led her to apply for a job with the space program. She got the job. For 35 years she helped plan the flight paths of spacecraft. Katherine was the first female African American space scientist. She helped women see that they can choose from many types of careers.



Which detail could be added to support the main idea of the paragraph?

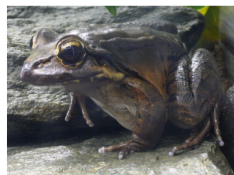
She traveled to the Moon and back.

## 2. Find the Main Idea

You cannot always tell what an animal is like from its name. A hairy frogfish is not a furry frog! It is a type of fish that lives in warm oceans near rock or coral reefs. It moves by "walking" on its fins. Another animal, the mountain chicken, does not live on a farm. It is a frog that lives in the Caribbean islands. A killer whale's name may fool you, too. Also known as the blackfish, it is not a whale or a fish. It is really a dolphin. An animal's name might fool you into thinking it is something that it is not!

What is the main idea?

- |  |  |
|--|--|
| a. A hairy frogfish uses its fins to walk. | c. An animal's name might not match its looks. |
| b. Whales can be dolphins.                 | d. Chickens can live in the mountains.         |






# 3 Versions

- Print
- Google Slides
- Webscape™ (Our most popular experience)

Learn more!





	<b>PDF</b> 	<b>Google Slides</b> 	<b>Webscape™</b> 
<b>Format Type</b>	Printable	Digital	Digital
<b>Device</b>	N/A	Any Device	Any Device
<b>Required Prep</b>	Print & Go	Copy & Share	Zero Prep
<b>Student Answers</b>	Printable Answer Pamphlet	Google Sheets Decoder Tool	Integrated Challenge Hub
<b>Self Correcting</b>	Includes Answer Key	Self Correcting	Self Correcting
<b>Custom Videos</b>	QR Codes	Embedded You Tube	Embedded
<b>Audio Readings</b>	N/A	No Audio Readings	Contains Audio Readings
<b>Navigation</b>	N/A	Student Directed	Automatically Advancing
<b>Extras</b>	Early Finish Challenges	Movable Pieces	Interactive Animation

## 3 Versions

- Print
- Google Slides
- Webscape™ (Our most popular experience)

*Learn more!*





# Print

- Cut and paste stamps for each challenge
- Easy to follow
- Optimal for group or partner work

Learn more!



## MERLIN'S MAIN IDEA MAGIC RECORDING BROCHURE

Record your  
challenge answers  
along your  
journey.



Welcome, my friend, to my Magical Wizarding School. I am Merlin.  
We will be testing your magical capabilities to determine your future at our  
school. You must complete four challenges to unlock the secret code and  
graduate from wizarding school.  
After each challenge, collect the item you need and lock it in your library.





click [here](#) to view the video.



1.

Surya is the sun itself. Surya space and the makes him in god and br picture o Surya is

Find the Main Idea

is also the



2.

You cannot c frogfish is not near rock or the mountain Caribbean i blackfish, An

Find the Main Idea

3.

Have you ever dreamed of living in a group of artists and builders come together to create Icehot! It is a lodge made of ice. Two nearby river and the rooms has a different style. Before are added to make the ice a come from all over the world to stay at the Ice

Find the Main Idea

MERLIN'S MAIN  
IDEA MAGIC  
RECORDING  
BROCHURE

Record your  
challenge answers  
along your  
journey.



## Certificate of Graduation



(name)

Has successfully completed the challenges at  
Merlin's Magical School and defeated the evil  
sorcerer Alwina.

(Date)

Merlin



## Ooops!

You lost your glasses. Your team  
blindfold you for 5 minutes



NO USING YOUR EYES  
MINUTES!

# Print

- Recording brochure for answers
- Self-checking decoder
- Certificate of completion

Learn more!



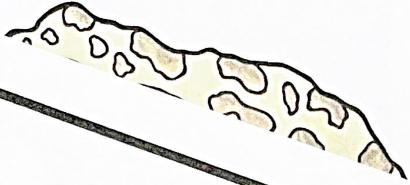


# Ooops!

Merlin's spell went horribly wrong. You were accidentally turned into a frog.

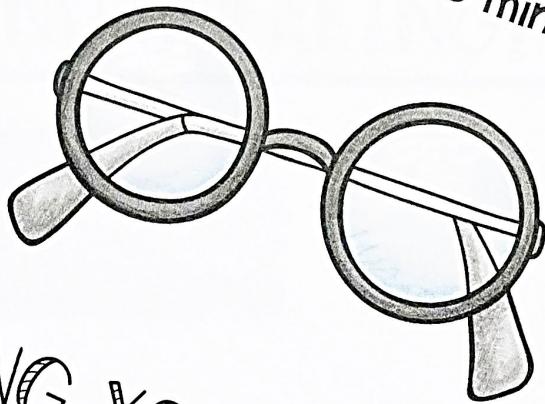


YO'



# Ooops!

You lost your glasses. Your teammates must blindfold you for 5 minutes.



NO USING YOUR FIVE  
MINUTES



# Print

- OOPS! Cards for differentiation

Learn more!





# Webscape <sup>TM</sup>

## Challenge #1

Click on each clue and answer the questions. Answer carefully, because the right answers will give you the clues to solve the challenge!

Clue #1

It

Clue #2

is

Clue #3



Clue #4



Clue #5



Clue #6



- Most interactive experience
- Self correcting
- Embedded videos
- Embedded audio
- Animation
- Simple navigation

Learn more!





# Webscape™

You've unlocked the spell book! Click on the book to put it in your library. You will need it later. Then, continue to your next challenge.



- No log ins or sign ups
- Works with any device that has an internet connection and web browser
- Zero prep! Just share the link with your students.

*Learn more!*





# Google Slides

## Find the Main Idea (Passage)

Almost everyone loves hot chocolate. Hot chocolate is a warm drink made with melted chocolate or cocoa powder mixed with warm milk or water and sugar. Did you know this drink has been around for about 3,000 years?

The Maya people made the first chocolate drink in 500 BC. They served their chocolate drink cold. The Mayas ground cocoa seeds into a paste. This was mixed with water, cornmeal, and chili peppers. The drink was poured from cup to cup and got a thick foam on top.

The Aztec people had a chocolate drink called xocolātl. This drink was not sweet like hot chocolate today because they did not have sugar. It was mixed with vanilla and other spices. It had a bitter and spicy flavor. The Aztecs were the first to heat their chocolate. Cocoa beans were used as money, so it was mostly rich people who drank xocolātl.



- One problem per slide
- Students drag to highlight their answers

Learn more!



# Google Slides

Copy of Merlin's Magic Decoding Tool ☆ 📄 🌐

File Edit View Insert Format Data Tools Extensions Help

100% 123 Default... 16 + B I A

	A	B	C	D	E	F	G	H
1								
2	<b>Question #</b>	<b>1</b>	<b>2</b>	<b>3</b>	<b>4</b>	<b>5</b>	<b>6</b>	
3	<b>Your Answers</b>	a						
4								
5	<b>Book Location</b>	They						
6								
7	KEEP LOOKING! DO NOT MOVE ON TO THE NEXT SLIDE.							
8								
9								
10								
11								
12								
13								
14								
15								
16								
17								
18								
19								
20								
21								

- Toggle to self-checking decoder
- Decoder will prompt at the end of each challenge whether students are correct or need to check their work.

Learn more!





# Looking for More?

