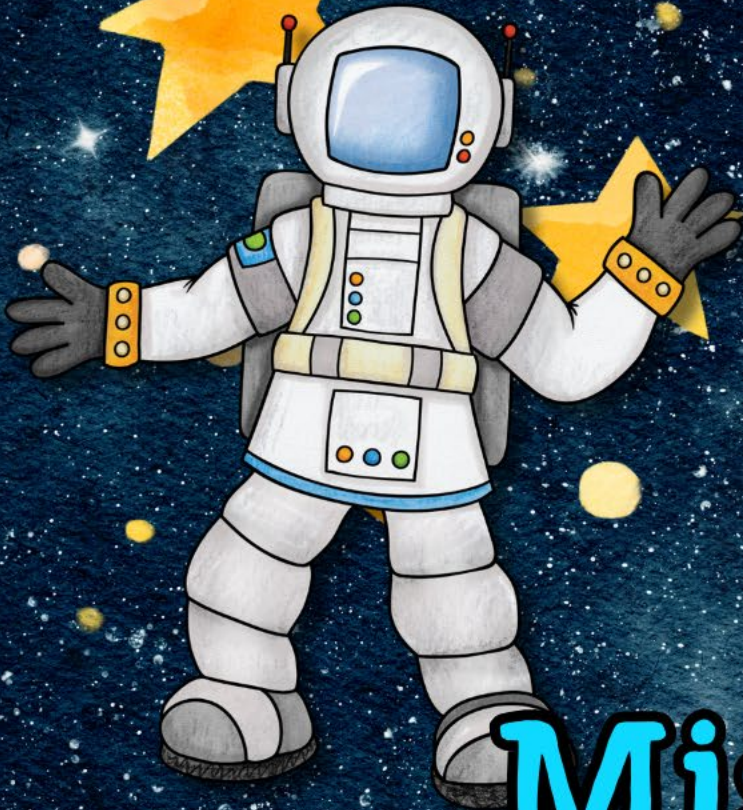


4th & 5th Grade



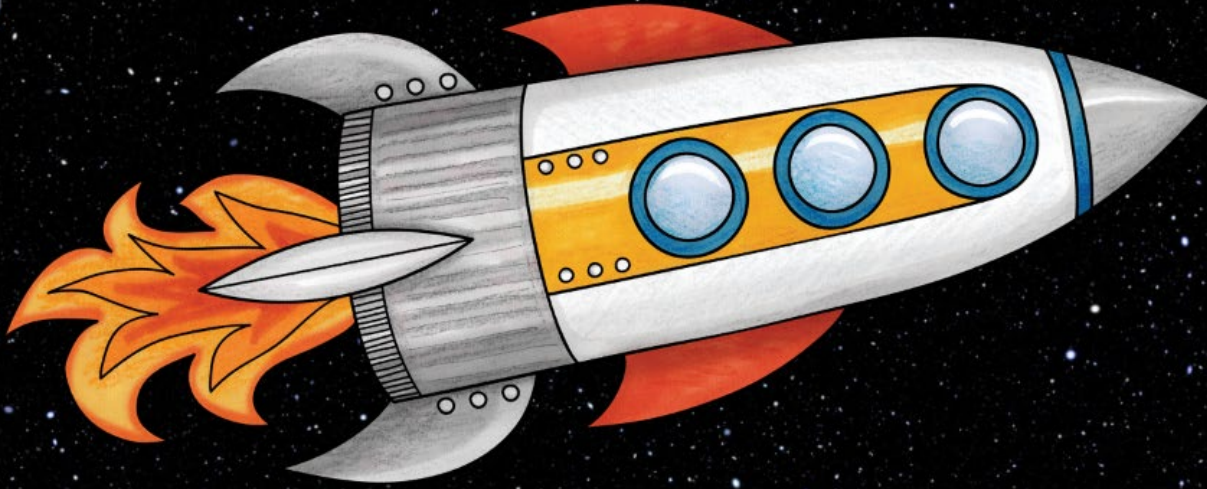
Text Features

Mission in Space Escape Room



PRINTABLE • GOOGLE • WEBSCAPE™

Mag
CORE



Your mission is to use the new "Hyperspace Drive" to cross space and touch down on the new planet Proxima B! After each challenge, add the item you need to your space shuttle to continue your mission.



Space Mission!

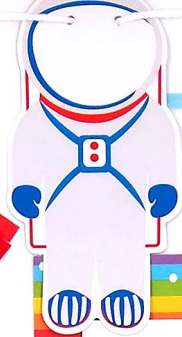
Students won't realize they are distinguishing information about Text Features! They will be immersed in the storytelling and our original videos as they complete reading comprehension challenges.

Learn more!



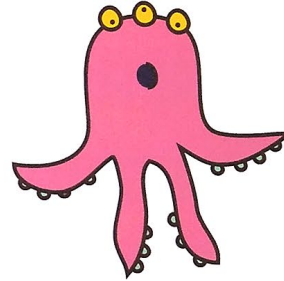
Challenge #2

1. Use text features to answer the questions.
2. Submit your answers to escape the black hole.
3. Collect the space creature to help you on your mission.



Escape the Black Hole

Enter your answers in the Space Decoder to see if you can escape the black hole. If you do, collect the space creature to help you continue your mission.



Scan the QR code or click here to view the video.



DO NOT go to the next page until you've answered the question on your brochure!

©2016 Baker

1. Text Features

The Panama Canal is a waterway in Central America. It connects the Atlantic Ocean and the Pacific Ocean. The canal is 48 miles long and cuts across the Isthmus of Panama. At each end it uses three pairs of locks for lifting and lowering ships on different water levels. This saves ships thousands of miles in their journeys, as they no longer need to go all the way around South America. Each year, about 14,000 ships come through the canal. The canal was completed in 1914 by the United States who spent ten years and 375 million dollars building it. It is such an amazing achievement that it has been named one of the Seven Wonders of the Modern World.

What title would best support this passage?

- a. "Locks"
- b. "South America"
- c. "The Panama Canal"
- d. "Seven Wonders of the Modern World"

©2016 Baker

4 Reading Challenges

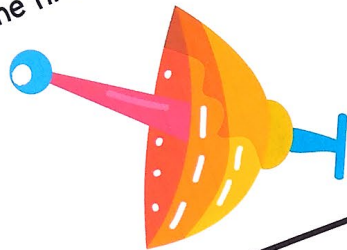
- Challenges focused on Images & Words
- Each challenge takes about 20-30 minutes
- 18 short nonfiction passages, 1 long nonfiction passage
- Multiple choice questions
- Passages in 1st Grade Text Complexity band (420L-820L)
- Passages and questions are scaffolded

Learn more!



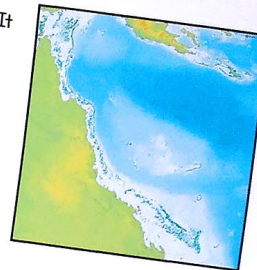
Challenge #4

1. Read the passage and use the text features to answer the questions.
2. Use your answers to make your way back to your home planet, Earth.
3. Collect the fire needed to fuel your trip.



The Great Barrier Reef

The Great Barrier Reef is the world's largest coral reef. It is close to the coast of Queensland, Australia. It is made up of nearly 3000 coral reefs and over 600 islands. It is so big that it can be seen from outer space! Unfortunately, the reefs are **threatened**. The biggest threat to the Great Barrier Reef today is coral bleaching caused by high sea water temperatures as a result of global warming.

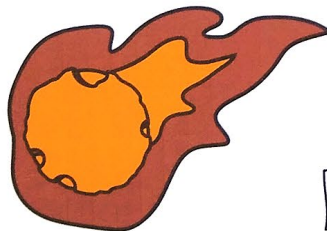


Animal Species

The Great Barrier Reef has 1,500 species of fish and many other animals, algae, and corals. This includes many **vulnerable** or endangered species. Some of these animal species exist only on this reef system. Six species of sea turtles come to the reef to breed. These are the green sea turtle, leatherback sea turtle, hawksbill turtle, loggerhead sea turtle, flatback turtle, and the olive ridley turtle. The fifteen different species of seagrass attract the turtles. They also provide a food and shelter for fish. The most common kinds of seagrasses are *Halophila* and *Halodule*.

Return to Earth

Enter your answers in the Space Decoder to return to your home planet.
Collect the fire needed to fuel the journey back.



DO NOT go to the next page until
you've answered the question on
your brochure!

Scan the QR code or [click here](#) to view the video.



MISSION ACCOMPLISHED

4 Reading Challenges

- Themed videos integrated throughout the Escape Room to keep kids engaged.
- Students work in groups, partners, or independently.

Learn more!



3 Versions

- Print
- Google Slides
- Webscape™ (Our most popular experience)

Learn more!



Text Features

Snow Leopard Unique Adaptations

The snow leopard is a large cat native to the mountain ranges of Central and South Asia. It is listed as a vulnerable species because the global population is estimated to number less than 10,000. They have gray and white fur with dark spots and their tails have stripes. A snow leopard's fur is very long and thick to protect it against the cold. Their feet are also big and furry, which helps them to walk on snow more easily. The snow leopard has the longest tail of any cat. Their unusually long tail helps them to maintain balance in the rocky terrains.

How does the visual text feature support the passage?

- It helps you understand how big the snow leopard is.
- It shows what the snow leopard looks like.
- It proves how big the snow leopard's tail is.
- It describes how their population is vulnerable.

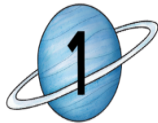
Text Features

Snow Leopards Unique Adaptations

The snow leopard is a large cat native to the mountain ranges of Central and South Asia. It is listed as a vulnerable species because the global population is estimated to number less than 10,000. They have gray and white fur with dark spots and their tails have stripes. A snow leopard's fur is very long and thick to protect it against the cold. Their feet are also big and furry, which helps them to walk on snow more easily. The snow leopard has the longest tail of any cat. Their unusually long tail helps them to maintain balance in the rocky terrains.

How does the visual text feature support the passage?

- It helps you understand how big the snow leopard is.
- It shows what the snow leopard looks like.



Snow Leopards Unique Adaptations

The snow leopard is a large cat native to the mountain ranges of Central and South Asia. It is listed as a vulnerable species because the global population is estimated to number less than 10,000. They have gray and white fur with dark spots and their tails have stripes. A snow leopard's fur is very long and thick to protect it against the cold. Their feet are also big and furry, which helps them to walk on snow more easily. The snow leopard has the longest tail of any cat. Their unusually long tail helps them to maintain balance in the rocky terrains.



How does the visual text feature support the passage?

It helps you understand how big the snow leopard is.

It shows what the snow leopard looks like.

It proves how big the snow leopard's tail is.

It describes how their population is vulnerable.

	PDF		

3 Versions

- Print
- Google Slides
- Webscape TM (Our most popular experience)

Learn more!



Print

- Cut and paste stamps for each challenge
- Easy to follow
- Optimal for group or partner work
- Recording brochure for answers
- Self-checking decoder

Learn more!



Space Decoder

Use the following codes for each challenge to unlock the secret item and move to the next challenge.

Challenge 1

Question 1
a = Behind
b = It
c = In
d = On

Question 2
a = landed
b = the
c = fall
d = where

Question 3
a = near
b = middle
c = around
d = on

Question 4
a = of
b = its
c = the
d = a

Question 5
a = shuttle
b = space
c = treasure
d = planet

Question 6
a = shuttle
b = Earth
c = Proxima B
d = space

Challenge 2

Question 1
a = Earthlings
b = The
c = I
d = Aliens

Question 2
a = was
b = had
c = held
d = steered

Question 3
a = the
b = my
c = it

Question 4
a = breath

Question 5

Question 6
Jumped
blinked
explored
st.

CHALLENGE 3

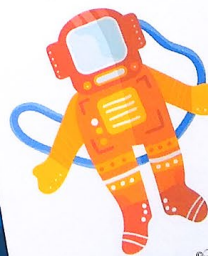


	Answer	Code
1.	b	The
2.	d	Space
3.		
4.		
5.		
6.		

How did you find Proxima B?

LOST IN SPACE TEXT FEATURES RECORDING BROCHURE

Record your
challenge answers
along your
journey.



Print

You Found Proxima B!

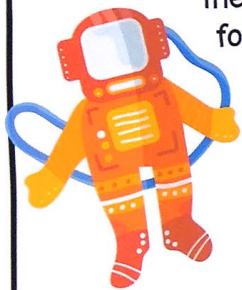
Sam Flint

(Name)

Has successfully completed
the challenges presented and
found the planet Proxima B.

8 / 10

(Date)



Ooops!

Your oxygen is running low.



YOU MUST STAY QUIET FOR 5
MINUTES. NO SPEAKING!

- Certificate of completion
- OOPS! Cards for differentiation

Learn more!



Webscape TM

- Most interactive experience
- Self correcting
- Embedded videos
- Embedded audio
- Animation
- Simple navigation

Learn more!



Challenge #1
Click on each clue and answer the questions. Answer carefully, because the right answers will give you the clues to solve the challenge!
Where did you find the "Hyperspace Drive?"



Webscape TM

- No log ins or sign ups
- Works with any device that has an internet connection and web browser
- Zero prep! Just share the link with your students.

Learn more!



Google Slides

- One problem per slide
- Students drag to highlight their answers

Learn more!



2. Text Features



Their coloring helps snow leopards easily camouflage in their environment.

What title could be added to this photograph to support the text feature shown?

- "Unique Fur Pattern"
- "Colors in the Wild"
- "All Animals Have Camouflage"
- "Amazing Eyesight"

Google Slides

- Engaging & educational multimedia
- 6 videos narrations about the story.

Learn more!



Looking for More?

