

4th & 5th Grade

# Fiction Reviews

## Frozen Ice Palace Escape Room



PRINTABLE • GOOGLE • WEBSCAPE™

# ESCAPE THE FROZEN ICE PALACE

You know the story of Hansel and Gretel! Two sweet little children, looking for food, and leaving a trail of breadcrumbs behind them! Soon, they meet a friendly witch who's more than happy to have them for dinner! See if YOU can escape! After each challenge, cut out the gingerbread parts and paste here to build your house!

## Challenge #2

1. Read the fiction passages and answer the questions.
2. Use your answers to melt the ice monster.
3. Take a picture of the ice monster to show your family. Keep your camera out... the ice crown is nearby!



## The Promise of a Seed

1.

A shovel cuts through sun-warmed soil, rich and dark, ready to receive the promise of a seed.

A tiny buried treasure, each seed carries the hope of becoming something greater than its origins.

With sky tears and sun hugs, roots take hold. Green bursts free from the darkness.

Each push upward is a victory. Each leaf unfurled is an exploration into being more.

Flowers bloom, their soft petals painting the world in scented rainbows and bee stripes.

Food develops from the buds. Mother Earth provides. Animals and humans delight in her bounty.

Tending a garden nurtures the body, settles the mind, and connects the soul to the promise of a seed.



1. Reread the third stanza of the poem.
- With sky tears and sun hugs,  
Roots take hold.  
Green bursts free from the darkness.*
- What is the author referring to in this stanza?
- a. Seeds can grow in darkness without the sun.
  - b. The sky is crying because the seeds are in the soil.
  - c. Rain and sunshine help the seeds grow up out of the soil.
  - d. Springtime is here, and it's not dark anymore.

2. Which of the following lines from the poem is an example of personification?
- a. "...their soft petals painting the world in scented rainbows..."
  - b. "Tending a garden nurtures the body..."
  - c. "Each push upward is a victory."
  - d. "Animals and humans delight in her bounty."

3. Reread the second stanza of the poem.
- A tiny buried treasure, each seed carries the hope of becoming something greater than its origins.*
- What is the author saying in this line?
- a. Sometimes large seeds don't grow into plants, but small seeds do.
  - b. Some seeds want to grow bigger and better than other seeds, so they compete.
  - c. Seeds have small pieces of gold hidden inside of them.
  - d. Seeds are small and don't look like much, but they can become something big.

## Challenge #3

1. Read the fiction passages and answer the questions.
2. Use your answers to find the ice crown.
3. Take a picture of the ice crown to show your family. Keep your camera out... spring is near!



1.

### A Patriot is Born

Edward crouched in the shadows behind the Thompsons' barn. He'd been brushing his hair in his own family's barn when he saw a pack of Redcoats. They slipped onto his neighbor's porch and walked straight into his barn. *What were British soldiers doing in Mr. Thompson's barn?* Edward had been suspicious of Mr. Thompson before. Just the other night while Edward's mother brought the table, his father was talking about him.

"He's up to something, Grace," he had said. "I can feel it in my bones, so we'd better keep an eye on Mr. Thompson."

Edward had decided to do as his father had suggested. But he wasn't just going to keep his ears open, he was going to keep his ears open, too. As he got closer, the British soldiers' voices flooded Mr. Thompson's barn.



"We'll circle around the perimeter of town tomorrow and catch them," one of them said.

"Then, we'll be in position to cut off supplies of all goods if they're coming in or going out," another said. "It's a good plan."

"The only thing that will stop us is a rebellion on the part of the people."

## Find the Ice Crown!

Enter your answers in the Ice Monster Decoder to see if you are ready to find the ice crown.

Scan the QR code or [click here](#) to view the video.



DO NOT go to the next page until you've answered the question on your brochure!

## Challenges

1. Read the passages and answer the questions to find the ice palace.
2. Read the passages and answer the questions to melt the ice monster.
3. Read the passages and answer the questions to find the ice crown.
4. Read the passages and answer all the questions to bring back spring.

LET'S GO!

# PRINT & DIGITAL VERSIONS

## PRINTABLE:

- Minimal Paper
- Great for group work
- Track answers with Brochure
- QR Codes for story videos

## MAGICORE WEB

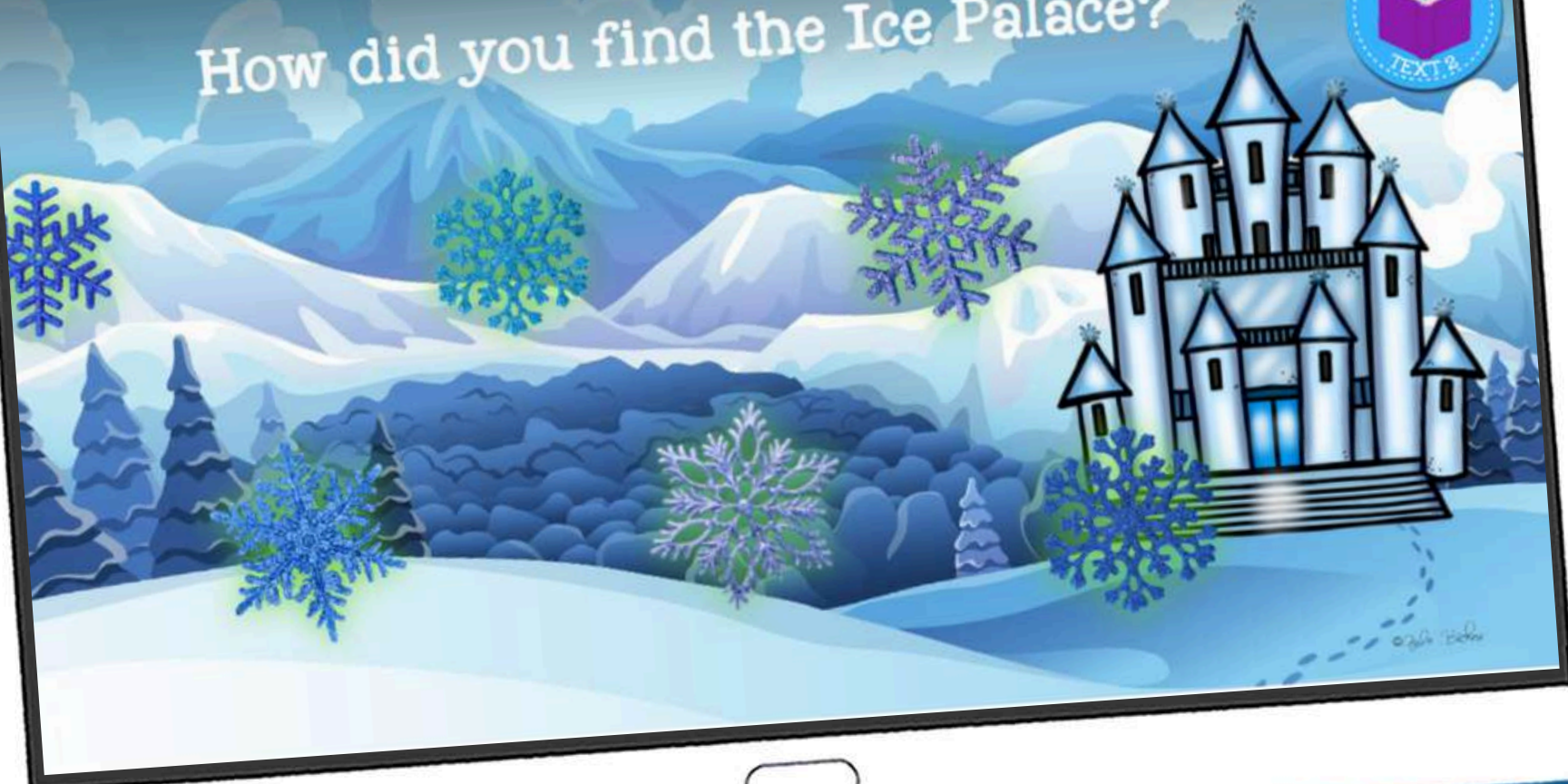
- Most popular experience
- Self-Checking
- Audio & Animation
- Access in Web Browser

## GOOGLE SLIDES

# Challenge 1

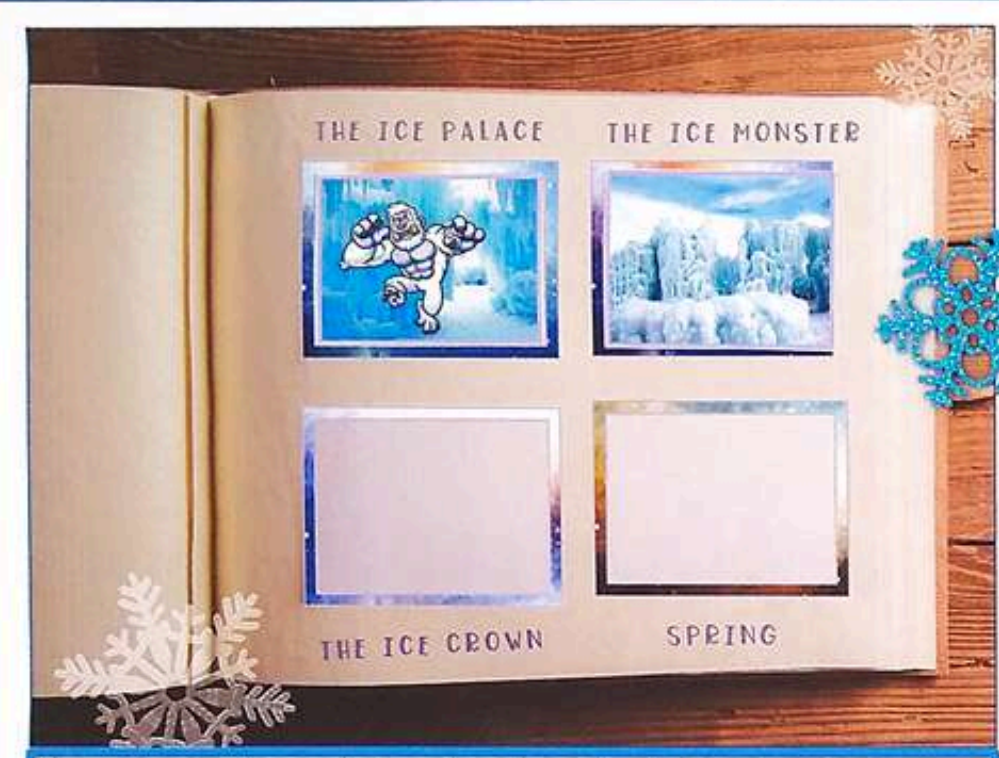
Click on the book to read the text, then click on each clue and answer the questions. Answer carefully, because the right answers will give you the clues to solve the challenge!

How did you find the Ice Palace?



**ORIGI★NAL  
VIDE★OS  
TELL THE  
STORY  
I★N PARTS  
THROUGHOUT  
THE ACTI★VITY**

# PRINTABLE BROCHURE TO TRACK ANSWERS IN PRINT OR DIGITAL VERSIONS



Your sister needs your help, and you know her better than anyone. Help her awaken her powers and bring back spring! Take your camera with you on your journey. You'll want to show your family and friends what you see! After each challenge, place your photo into the album for

## Ice Monster Decoder

Use the following codes for each challenge. Take your photo and move on to the next challenge.

	Question 1	Question 2	Question 3	Question 4	Question 5	Question 6
Challenge 1	a = We b = It c = There d = In	a = over b = the c = if d = was	a = hidden b = middle c = around d = snow	a = glistening b = the c = trees d = in	a = covered b = snow c = bright d = plain	a = tower. b = forest. c = sight. d = massive.

	Question 1	Question 2	Question 3	Question 4	Question 5	Question 6
Challenge 2	a = By b = The c = We d = I	a = sent b = saw c = felt d = had	a = over b = of c = some d = the	a = huge b = bright c = snowballs d = reindeer	a = sledding b = running c = gleaming d = yelling	a = north b = away. c = east. d = sunlight.

	Question 1	Question 2	Question 3	Question 4	Question 5	Question 6
Challenge 3	a = The b = In c = There d = We	a = had b = used c = the d = saw	a = monster b = tower c = palace d = corner	a = ice b = treasure c = snow d = of	a = and b = more c = the d = over	a = palace. b = lake. c = tower. d = reindeer.

	Question 1	Question 2	Question 3	Question 4	Question 5	Question 6
Challenge 4	a = I b = When c = We d = The	a = discovered b = giant c = saw d = colorful	a = sparkling b = sunlight c = box d = blossoms	a = started b = began c = and d = was	a = to b = the c = small d = in	a = green. b = melted. c = reappear. d = blossom.

### FROZEN ICE PALACE RECORDING BROCHURE

Record your challenge answers during your mission.




	Answer	Code
1.	b	In
2.	c	the
3.	b	tower
4.		
5.		
6.		

Where did you find the Ice Crown?

\_\_\_\_\_

\_\_\_\_\_

\_\_\_\_\_

# Frozen Ice Palace Challenge Complete!

Lucy Smith  
(Name)

has successfully  
completed the challenges  
and brought back spring!

3/07  
(Date)

*The Ice Queen*



Scan the QR code or  
click here to view the  
video.



**"OOOPS" CARDS  
TO ADD A  
CHALLENGE AND  
DIFFERENTIATION**

**COMPLETION  
CERTIFICATE**

**Ooops!**  
You angered the Ice Monster.



**YOU MUST STAY QUIET FOR 5  
MINUTES. NO SPEAKING!**

# SKILLS ADDRESSED

- General Reading Comprehension
- Using Text Evidence
- Theme

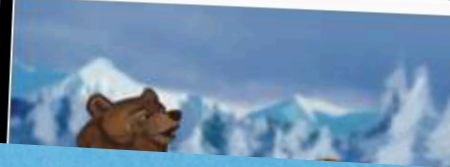
# TEXT GENRES

- Fiction
- Fantasy
- Fairytales

## 1. A Dene Legend of the Seasons

When people and animals first roamed Earth, winter stretched on for all twelve months of the long year. Enormous, moving layers of ice and snow blanketed most of the land, making it impossible for anything to flourish. No water flowed because lakes and rivers were frozen solid. The people and animals were cold, and they feared they would not survive much longer in this arctic environment.

One frigid day, the first people were out hunting, and they discovered a large bear with a sack around its neck.



"What is in that sack?" one of the hunters asked the bear.

"It is packed with summer warmth and bright sunlight," the bear growled.

The people instantly craved what was in that sack because it could mean relief from the harsh conditions on Earth. "Let us trade you something for your sack," the hunters pleaded.

The bear snarled, baring his teeth. "I will not part with such a treasure."

The hunters begged the bear, but when they saw it was useless, they decided to return to their village to develop a plan.

"We will have a feast," the chief said as the people assembled.

## Challenge #2

1. Read the fiction passages and answer the questions.
2. Use your answers to melt the ice monster.
3. Take a picture of the ice monster to show...



## 2. The Rusty Truck

Characters: Narrator, Dad, Uncle Tim, Jimmy, Sarah, and Beth

**Scene 1**  
**Setting:** Several tents are set up in a circle with Dad's pickup truck in the background of the campsite. A fire blazes in the center of the space, and the characters sit on stumps around it. Darkness surrounds them, except for the firelight.

**Narrator:** The Crentons are on their annual camping trip to Maine.

**Jimmy:** (toasts a marshmallow to nearly burning on a long stick over the fire) Uncle Tim, you promised us a story.

**Sarah:** (pulls her marshmallow off her stick, making a gooey mess) I want a really scary story!

**Dad:** (hands Sarah a napkin to wipe her fingers) You won't be able to sleep if it's too scary.

**Beth:** Aww, Dad, we can handle scarier stories than last year. We're older now. (expertly pulls her marshmallow off her stick with no mess)

**Uncle Tim:** Beth is right. (builds his s'more and pops it into his mouth) I think this crew is ready for "The Rusty Truck."

**Narrator:** The children finish their s'mores and draw closer to the fire, ready to hear the story. The woods behind them are very dark, and a lone owl hoots from a nearby tree.





**MAG\*CORE  
WESCAPEB IS  
AN EXPER\*ENCE  
LIKE NO OTHER!**

Answer questions  
to reveal clues to  
solve the puzzle!

# MAG\*CORE WEB

## Challenge 2

How did you lure the ice monster into the sun?

Click on the book to read the text, then click on each clue and answer the questions. Answer carefully, because the right answers will give you the clues to solve the challenge!



- Full Audio
- Animation
- Sound Effects

# MAG\*CORE WEB



- Self-Correcting
- Requires  
Critical  
Thinking

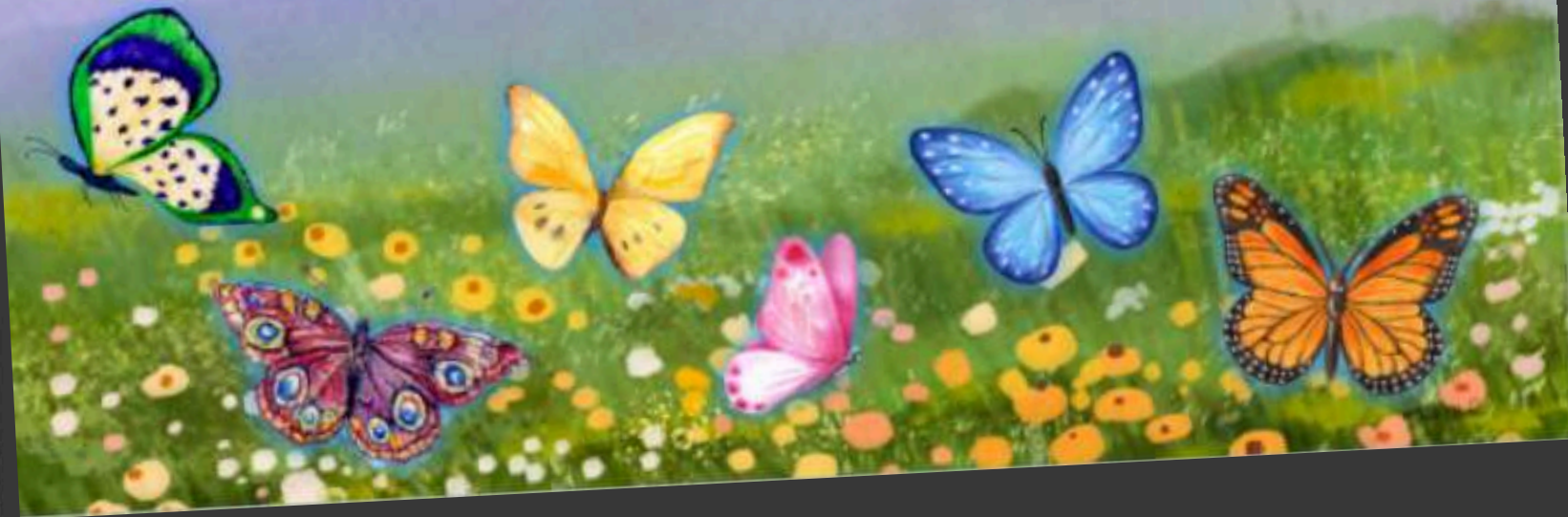


## Challenge 4

Click on the book to read the text, then click on each clue and answer the questions. Answer carefully, because the right answers will give you the clues to solve the challenge!



When did you know that spring was returning?



**MAG\*CORE  
WEB \*IS AN  
EXPERE\*INCE  
LIKE NO  
OTHER!**

# LOVE THIS DIGITAL RESOURCE?

you'll ❤️ magicore academy!

## WHAT'S INSIDE?

HUNDREDS of digital, interactive resources for your entire class.

- Assign directly to your students
- Easily differentiate for your class
- Teacher portal to view student responses
- Self-correcting for immediate student feedback
- Lexile levels & audio read aloud options
- Engaging animation

MagicCORE academy

## Resources include: ★

- Escape Rooms
- Virtual Field Trips
- Interactive Readers
- Mini Lessons
- Games
- Magical Mysteries

...and more added daily!



MAGICOREACADEMY.COM  
10-DAY FREE TRIAL!

