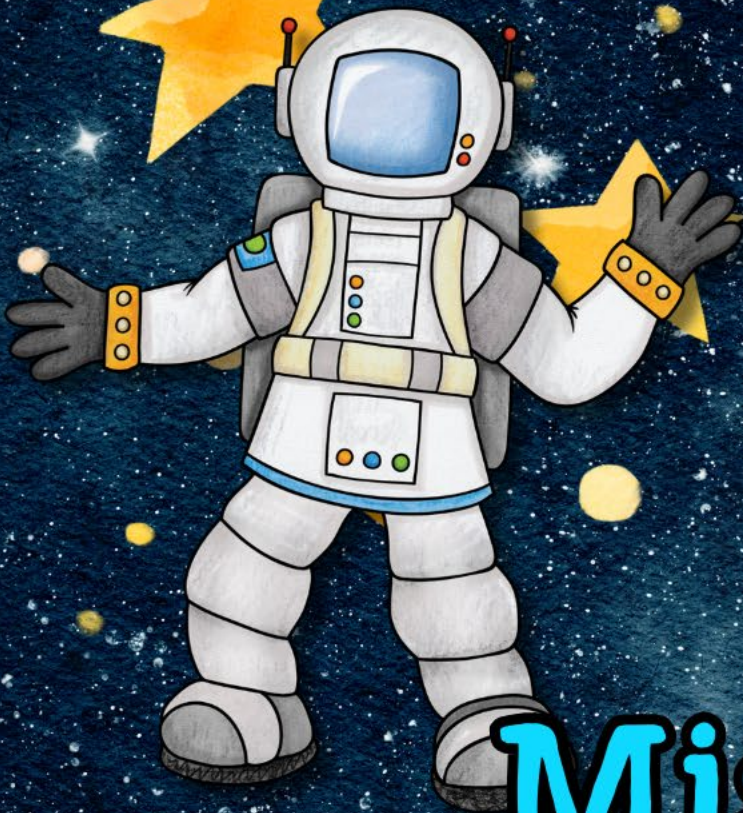


1st Grade



Text Features

Mission in Space Escape Room



PRINTABLE • GOOGLE • WEBSCAPE™

Mag
CORE

Space Mission!

Students won't realize they are distinguishing information about Text Features! They will be immersed in the storytelling and our original videos as they complete reading comprehension challenges.

You are on a mission in space! Collect puzzle pieces to complete the puzzle at the end. Then, safely make your way back home.



©Julie Beebe



Learn more!



4 Reading

Challenge #1



1. Study the text features
2. Answer the questions.
3. Collect your puzzle piece.

1.

Mission	Launch Date	Accomplishment	Return Date
Apollo 8	December 21, 1968	Orbited the moon and returned to Earth	December 27, 1968
Apollo 10	May 18, 1969	Orbited the moon and returned to Earth	May 26, 1969
Apollo 11	July 16, 1969	Landed on the moon and returned to Earth	July 24, 1969
Apollo 12	November 14, 1969	Landed on the moon and returned to Earth	November 24, 1969
Apollo 13	April 11, 1970	Flew by the moon and returned to Earth; Couldn't land on the moon due to a problem	April 17, 1970
Apollo 14	January 31, 1971	Landed on the moon and returned to Earth	February 9, 1971
Apollo 15	July 26, 1971	Landed on the moon and returned to Earth	August 7, 1971
Apollo 16	April 16, 1972	Landed on the moon and returned to Earth	April 27, 1972
Apollo 17	December 7, 1972	Landed on the moon and returned to Earth	December 19, 1972



Which text feature is shown above?

- a. Caption
- b. Glossary
- c. Table
- d. Heading

2.

Sally Ride

Sally Ride was the first American woman to fly to space. She was born in California on May 26, 1951. She studied **physics** in college. She saw an ad in a newspaper. It asked women to join NASA's astronaut program. Sally Ride applied. She was chosen. Her job was to work the robotic arm on the space shuttle. She put **satellites** into space. She became a teacher when she left NASA. She also wrote books. She wanted to get more women involved in science and math. She was honored for her hard work. Sally Ride died on July 23, 2012.

Which text feature is circled in the passage?

- a. Caption
- b. Diagram
- c. Table
- d. Bold Print

- Challenges focused on Images & Words
- Each challenge takes about 20-30 minutes
- 18 short nonfiction passages, 1 long nonfiction passage
- Multiple choice questions
- Passages in 1st Grade Text Complexity band (420L)
- Passages and questions are scaffolded

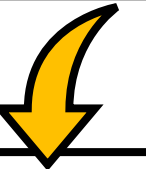
Learn more!



4 Reading Challenges

- Themed videos integrated throughout the Escape Room to keep kids engaged.
- Students work in groups, partners, or independently.

Learn more!



Challenge #2

1. Study the text features.
2. Answer the questions.
3. Collect your



1.

Are We Alone?

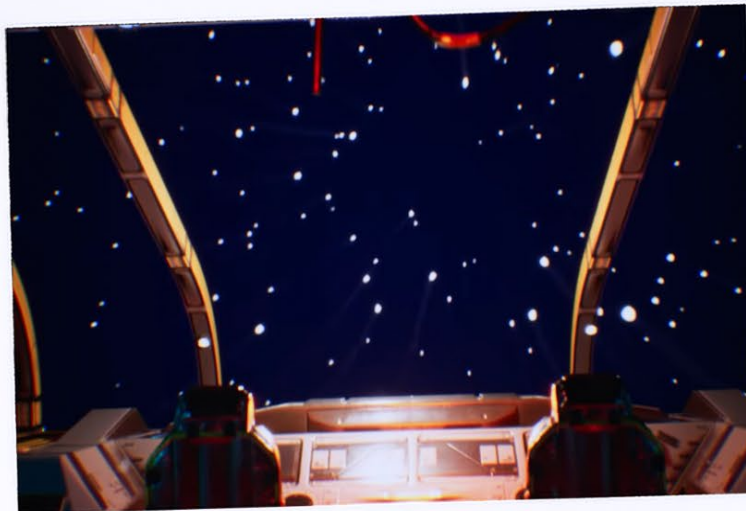
Who or What Is Out There in Space?

Introduction	Page 3
Life on Earth	Page 6
The Search for Others	Page 9
The Mars Possibility	Page 12
UFO Evidence	Page 17
First Contact	Page 20
Friends or Enemies?	Page 24
A Future Together	Page 27
More Information	Page 30
Glossary	Page 32
Index	Page 34

Which text feature is the arrow pointing to?

- a. Caption
- b. Heading
- c. Bold print
- d. Title

Scan the QR code or [click here](#) to view the video.



3 Versions

- Print
- Google Slides
- Webscape™ (Our most popular experience)

Learn more!



1.

Mission	Launch Date	Accomplishment	Return Date
Apollo 8	December 21, 1968	Orbited the moon and returned to Earth	December 27, 1968
Apollo 10	May 18, 1969	Orbited the moon and returned to Earth	May 26, 1969
Apollo 11	July 16, 1969	Landed on the moon and returned to Earth	July 24, 1969
Apollo 12	November 14, 1969	Landed on the moon and returned to Earth	November 24, 1969
Apollo 13	April 11, 1970	Flew by the moon and returned to Earth; Couldn't land on the moon due to a problem	April 17, 1970
Apollo 14	January 31, 1971	Landed on the moon and returned to Earth	February 9, 1971
Apollo 15	July 26, 1971	Landed on the moon and returned to Earth	August 7, 1971
Apollo 16	April 16, 1972	Landed on the moon and returned to Earth	April 27, 1972
Apollo 17	December 7, 1972	Landed on the moon and returned to Earth	December 19, 1972

Which text feature is shown above?

- Caption
- Glossary

1.

Mission	Launch Date	Accomplishment	Return Date
Apollo 8	December 21, 1968	Orbited the moon and returned to Earth	December 27, 1968
Apollo 10	May 18, 1969	Orbited the moon and returned to Earth	May 26, 1969
Apollo 11	July 16, 1969	Landed on the moon and returned to Earth	July 24, 1969
Apollo 12	November 14, 1969	Landed on the moon and returned to Earth	November 24, 1969
Apollo 13	April 11, 1970	Flew by the moon and returned to Earth; Couldn't land on the moon due to a problem	April 17, 1970
Apollo 14	January 31, 1971	Landed on the moon and returned to Earth	February 9, 1971
Apollo 15	July 26, 1971	Landed on the moon and returned to Earth	August 7, 1971
Apollo 16	April 16, 1972	Landed on the moon and returned to Earth	April 27, 1972
Apollo 17	December 7, 1972	Landed on the moon and returned to Earth	December 19, 1972

What text feature is shown above?




Caption

Glossary

Table

Heading

3 Versions

	PDF 	Google Slides 	Webscape™ 
Format Type	Printable	Digital	Digital
Device	N/A	Any Device	Any Device
Required Prep	Print & Go	Copy & Share	Zero Prep
Student Answers	Answer Directly on the Printable	Interactive Google Slides Movables	Integrated Challenge Hub
Self Correcting	Includes Answer Key	Includes Answer Key	Self Correcting
Custom Videos	QR Codes	Embedded You Tube	Embedded
Audio Readings	N/A	No Audio Readings	Contains Audio Readings
Navigation	N/A	Student Directed	Automatically Advancing
Extras	Early Finish Challenges	Movable Pieces	Interactive Animation

- Print
- Google Slides
- Webscape™ (Our most popular experience)

Learn more!



Print

- Cut and paste stamps for each challenge
- Easy to follow
- Optimal for group or partner work

Learn more!



Print

You Found Proxima B!

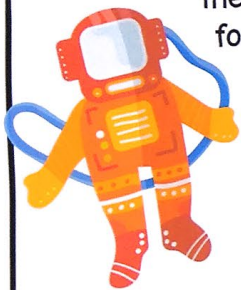
Sam Flint

(Name)

Has successfully completed
the challenges presented and
found the planet Proxima B.

8 / 10

(Date)



Ooops!

Your oxygen is running low.



YOU MUST STAY QUIET FOR 5
MINUTES. NO SPEAKING!

- Certificate of completion
- OOPS! Cards for differentiation

Learn more!



Webscape TM

- Most interactive experience
- Self correcting
- Embedded videos
- Embedded audio
- Animation
- Simple navigation

Learn more!



Webscape TM

- No log ins or sign ups
- Works with any device that has an internet connection and web browser
- Zero prep! Just share the link with your students.

Learn more!



Google Slides

- Three problems per slide
- Students drag to highlight their answers

Learn more!



A vibrant collage of space-themed items. At the top center is a white rocket with red and blue stripes and a blue circle. Below it are two rainbows: one on the left with a blue tassel and one on the right with a pink tassel. A white tablet is positioned in the center, displaying a video of a space station interior with a large play button icon. To the left of the tablet is a pink keychain with a rocket and a small white robot. At the bottom right is a rainbow with a white astronaut figure. The background is a mix of blue, pink, and white with star patterns.

Google Slides

- Engaging & educational multimedia
- 6 videos narrations about the story.

Learn more!



Looking for More?

