

# RESEARCH WEBQUEST

# Anglerfish

## Classifying Anglerfish

Species of anglerfish. They are divided into 4 main groups: batfish, goosefish,



**Goosefish**  
Lies on sand and mud on the floor. People eat its tail and liver.



**Frogfish**  
Camouflage themselves with spinules, algae, or other organisms for protection.



**Deep-sea Angler**  
Live in complete darkness in the bathypelagic zone.



# Integrates Reading

## Predators of the Ocean Floor

Anglerfish are named for the long filament that extends from a fin on the top of their head out in front of their bodies. It is an extension of their spine and acts as a "fishing rod." The tip has bioluminescent bacteria in it, which the fish uses as bait. Since the ocean is completely dark where they live, other animals and fish are attracted to their light, but when they get too close, the anglerfish eats them with its large mouth. Its mouth, jaw, and belly are so flexible they have even been known to swallow prey twice their size. They developed this ability because there are not many fish that live deep in the ocean, and they do not always get to eat every day.



Watch this video  
anglerfish swimming  
catching a squid

Describe how anglerfish hunt for their prey.

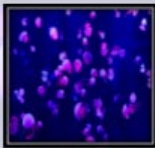
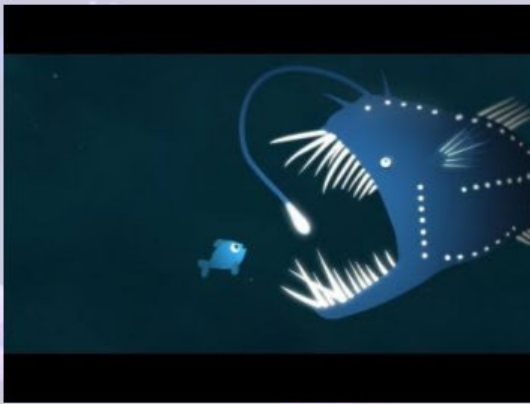
Please Note: Links are provided to the recommended videos.

\*Please Note: Links to videos are provided along with instructions for embedding.

# Engaging & Educational Media

## Bioluminescence

Directions: Watch the video to learn about bioluminescence. Then, answer the questions.



Copy and paste the stamp into your scrapbook.



What are some animals that use bioluminescence?

How are scientists using bioluminescence?

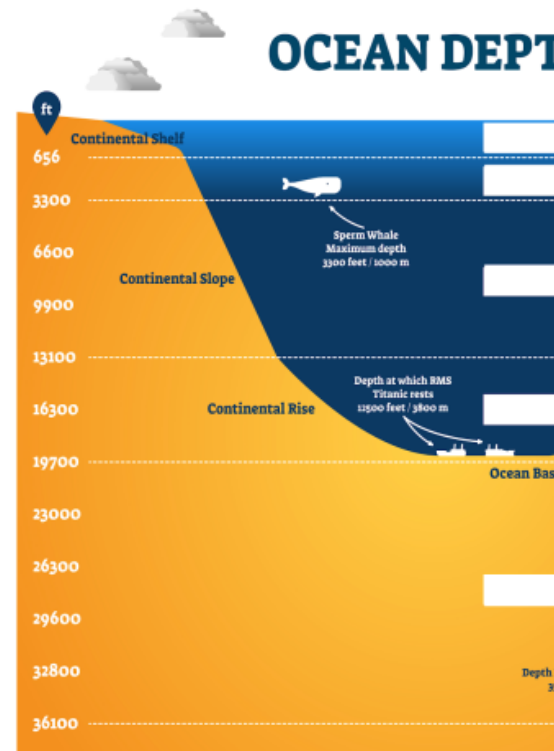
Please Note: Links are provided to the recommended videos.

\*Please Note: Links to videos are provided along with instructions for embedding.

# Research & Report Skills

## Ocean Layers

The ocean is divided into 5 layers. Watch as the submarine travels through the first 3 layers. Take note of how the ocean looks and what changes as they move down deeper under the sea. Drag and drop the name of each layer onto the diagram. Then, place the deep-sea anglerfish in the layer it lives in.



Please Note: Links are provided to the recommended videos.

\*Please Note: Links to videos are provided along with instructions for embedding.

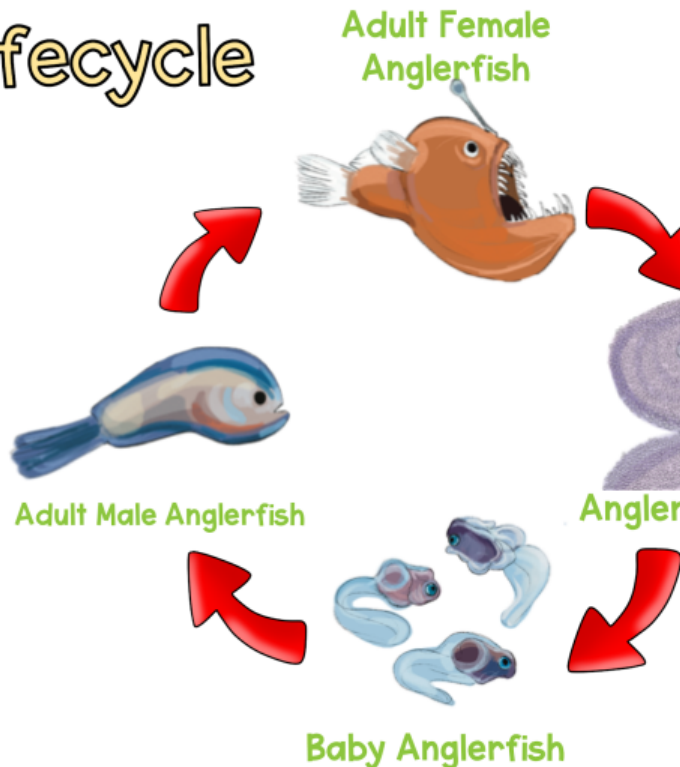
# Interactive Slides

## Anglerfish Lifecycle

The female anglerfish lays her eggs in a thin sheet of gelatinous material. The sheet is about two or three feet wide and about 30 feet long. The thin sheet of eggs floats free in the sea until the eggs hatch into tiny larvae. After they hatch, the larvae swim to the surface and feed on plankton. As they mature, they return to the depths below. The females will grow into full size anglerfish, while the males will search for a female to attach to. They must find a female in order to survive.




Copy and paste the stamp into your scrapbook.



# Critical Thinking

## Journal

What do you think about anglerfish and the deep sea? Would you want to take the midnight zone of the ocean? What would you think if you saw an anglerfish?



The illustration shows an open journal with two blank pages. The pages are white with a yellow border. The journal is bound in the middle, and the spine is visible on the left side. The journal is set against a dark background with a glowing blue and purple nebula-like pattern.