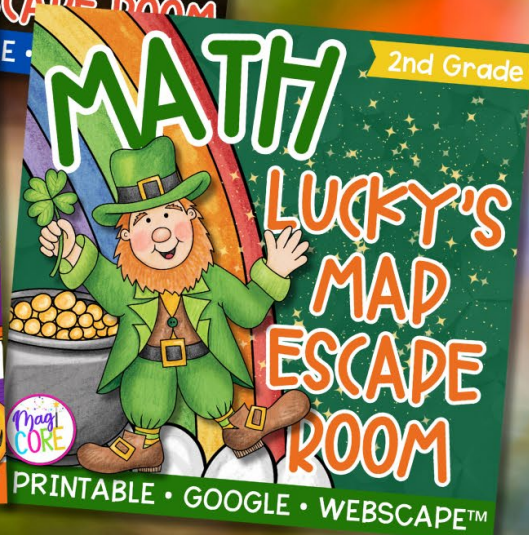
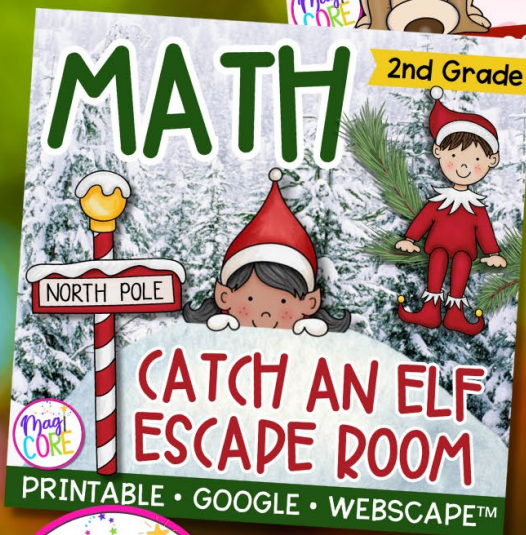
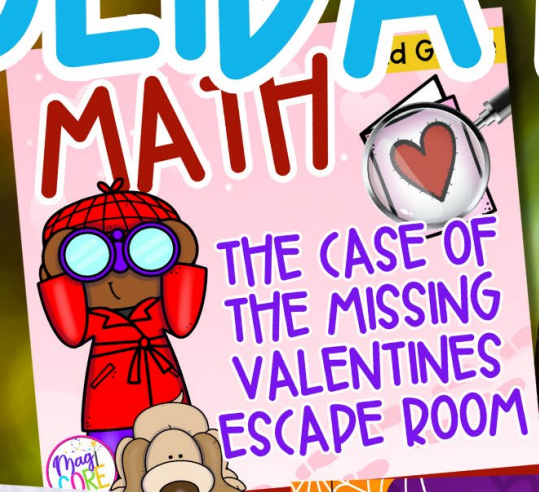


2nd Grade

HOLIDAY MATH



ESCAPE ROOM BUNDLE

PRINTABLE • GOOGLE • WEBSCAPE™



MATH

2nd Grade



CATCH AN ELF ESCAPE ROOM



PRINTABLE • GOOGLE • WEBSCAPE™

4 Math Challenges

Challenge #1



Scan the QR code or click [here](#) to view the video.



- Solve each "place value" problem.
- Record answers on your brochure.
- Check your answers in the Catch an Elf Decoder.
- Add the cookie to the workshop.
- Scan the QR code in the corner of this page.
- Move on to the challenge #2.

1. How many tens are in the number below?

873

- 8
- 7
- 6
- 3

3. Which of the following has the same value in the tens place as the number below?

682

- 868
- $200 + 80 + 6$
- $800 + 30 + 4$
-

2. Which of the following ways could you show the number below?

624

- $600 + 20 + 40$
- Six hundred twenty forty
-
-

4. Which of the following has the same value in the hundreds place as the number below?

287

- $300 + 20 + 8$

4. The sleigh needs 76 feet of space to come to a complete stop on a roof. If your roof is 82 feet long, how much extra space will there be on the roof?

Show Your Work

- 4 feet
- 6 feet
- 8 feet
- 12 feet

5. Santa drank 14 cups of hot chocolate, you drank 9 cups, and the elf drank 17 cups before you caught him. How many cups of hot chocolate did you, Santa, and the elf drink altogether?

Show Your Work

6. The wrapping station started out with 60 rolls of wrapping paper. The elves used 42 rolls to wrap the presents made yesterday. How many rolls are left in the wrapping station?

Show Your Work

Challenge #2



- Solve each word problem.
- Record answers on your brochure.
- Check your answers in the Catch an Elf Decoder.
- Add the snowflake to the workshop.
- Scan the QR code at the bottom of the next page.
- Move on to challenge 3.

1. The elves must make 95 toys each week to make their holiday goal. If they already made 47 toys this week, how many more toys do they still need to make?

Show Your Work

- 48
- 47
- 56
- 33

2. You line up 25 candy canes, 18 gum drops, and 46 gingerbread men to make the elves come into your kitchen where you have a trap. How many items did you set up in your trap?

Show Your Work

- 64
- 68
- 79
- 89

3. Papa Elf is checking Santa's list. He checked 53 names on Tuesday and 39 names on Wednesday. How many names must he check on Thursday if he needs to check 100 names total?

Show Your Work

- 6
- 8
- 12
- 16

©2016 Tally



- 26 cups
- 10 cups
- 9 cups
- 10 cups

- 17 cups
- 17 cups



Videos Tell the Story

Challenge #3

1. Solve each shapes problem.
2. Record answers on your brochure.
3. Check your answers in the Catch an Elf Decoder.
4. Add the sled to the workshop.
5. Scan the QR code in the corner of this page.
6. Move on to the challenge #4.



Scan the QR code or click [here](#) to view the video.



1. What shapes are shown below?



- a. Triangle, heptagon, circle, pentagon
- b. Triangle, pentagon, oval, hexagon
- c. Triangle, pentagon, circle, octagon
- d. Square, heptagon, oval, hexagon

2. How many sides and vertices does the shape have?



3. Which shape has 6 sides and 6 vertices?



- a. Shape 1
- b. Shape 2
- c. Shape 3
- d. Shape 4

5. Which shape has 0 vertices and 0 faces?



- a. Shape 1
- b. Shape 2
- c. Shape 3
- d. Shape 4

4. Which shapes are shown below?



- a. Cube, triangular pyramid, sphere, rectangular solid
- b. Sphere, triangular pyramid, rectangular solid, cube

6. How many edges, faces, and vertices does the shape have?



- a. 8 edges, 5 faces, 5 vertices

Challenge #4



1. Solve each "find the mistake" problem.
2. Record answers on your brochure.
3. Check your answers in the Catch an Elf Decoder.
4. Add the elf to the workshop.
5. Scan the QR code in the corner of the next page.
6. Find the fireplace and catch the elf!

1. What mistake did the student make when adding the numbers?

$$\begin{array}{r} 37 + 59 = 97 \\ 30 + 7 \\ + 50 + 9 \\ \hline 80 + 17 = 97 \end{array}$$

- a. The student added 30 + 50 incorrectly.
- b. The student forgot to add the 10 they regrouped when adding 7 + 9.
- c. The student added 7 + 9 incorrectly.
- d. The student did not make a mistake.

2. What mistake did the student make when subtracting the numbers?

$$\begin{array}{r} 80 \quad 12 \\ 92 - 28 = 56 \\ - 90 + 2 \\ \hline - 20 + 8 \\ 60 - 4 = 56 \end{array}$$

- a. The student subtracted 80 - 20 incorrectly.
- b. The student subtracted 60 - 4 when they should have added 60 + 4.
- c. The student did not need to regroup a ten from the 90.
- d. The student did not make a mistake.

3. What mistake did the student make when adding the numbers?

$$\begin{array}{r} 56 + 19 = 75 \\ 50 + 6 \\ + 10 + 9 \\ \hline 60 + 15 = 75 \end{array}$$

- a. The student added 50 + 10 incorrectly.
- b. The student did not regroup a ten when adding 6 + 9.
- c. The student added 60 + 15 when they should have subtracted.
- d. The student did not make a mistake.

4. What mistake did the student make when adding the numbers?

$$\begin{array}{r} 77 \\ + 17 \\ \hline 84 \end{array}$$

- a. The student did not regroup a ten after adding 7 + 7.
- b. The student added 7 + 1 incorrectly.
- c. The student added an extra one to 7 + 7.
- d. The student did not make a mistake.

5. What mistake did the student make when subtracting the numbers?

$$\begin{array}{r} 84 \\ - 17 \\ \hline 73 \end{array}$$

- a. The student subtracted 8 - 1 incorrectly.
- b. The student did not ungroup a 10 from the 8 before subtracting 4 - 7.
- c. The student added 4 + 7 instead of 4 - 7.
- d. The student did not make a mistake.

6. What mistake did the student make when adding the numbers?

$$\begin{array}{r} 58 \\ + 29 \\ \hline 87 \end{array}$$

- a. The student added 5 + 2 incorrectly.
- b. The student did not regroup a 10 after adding 8 + 9.
- c. The student did 8 - 9 instead of 8 + 9.
- d. The student did not make a mistake.

Scan the QR code or click [here](#) to view the video.



Webscape & Google Slides

Challenge #1

Click on each clue and answer the questions. Answer carefully, because the right answers will give you the clues to solve the challenge!

How did you find the cookies?

I

followed

Clue #3

Clue #4

Clue #5

Clue #6



MATH

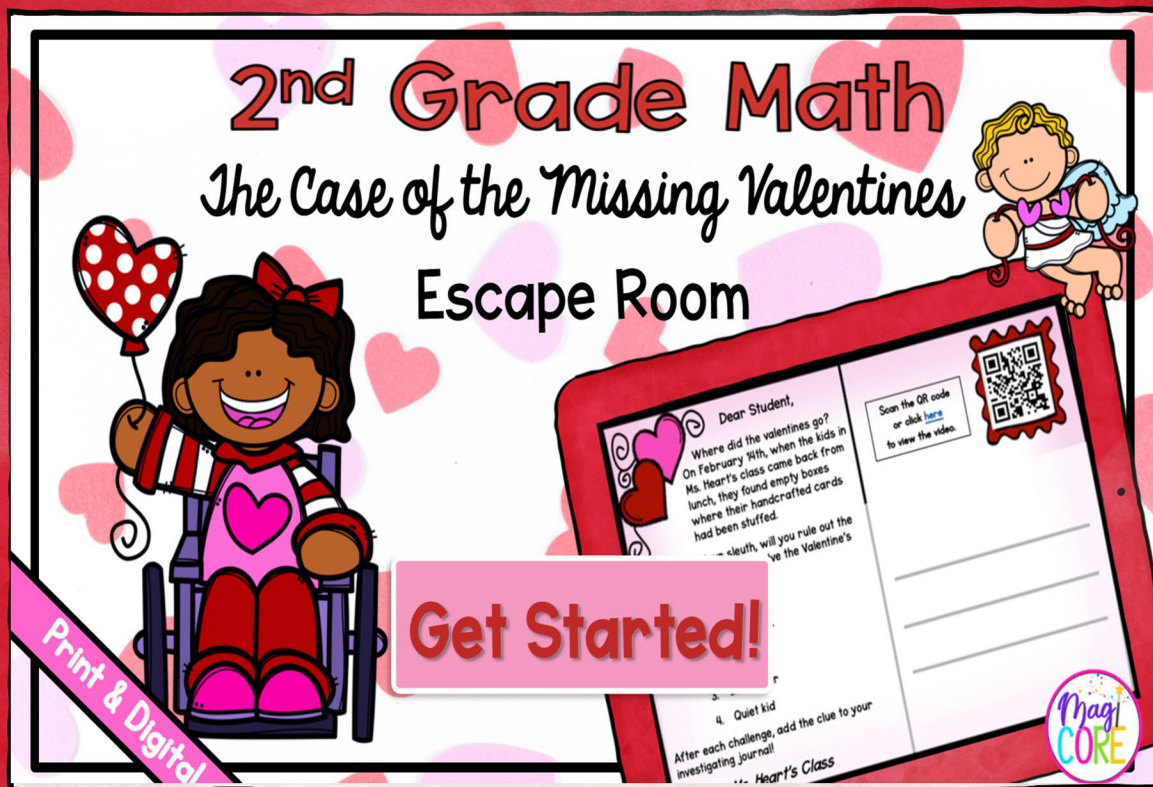
2nd Grade



THE CASE OF THE MISSING VALENTINES ESCAPE ROOM

PRINTABLE • GOOGLE • WEBSCAPE™

Digital Webscape™ & Google Slides



Google Slides Prompt Students to use Decoder



Investigate the Influencers!

Enter your answers in the decoder to
see if you found the valentine thief!



DO NOT go to the next page until
prompted to do so by the Decoder!

© Julie Becker

Google Slides Decoder in Digital Version is Self-Checking

The screenshot shows a Google Slides interface titled "Missing Valentines Escape Room Decoding Tool". The interface is designed for a digital escape room challenge. It features a grid with columns labeled A through H and rows numbered 1 through 22. The grid is mostly light blue, with a yellow rectangular box in the center containing the text "KEEP LOOKING! DO NOT MOVE ON TO THE NEXT SLIDE.".

At the top of the grid, there is a section for "Question #" and "Your Answers". The "Question #" row has columns 1 through 6. The "Your Answers" row has corresponding dropdown menus for each column. Below this, there is a text input field labeled "What did you ask the hall monitor?".

At the bottom of the screen, there is a navigation bar with four tabs: "Challenge 1 - Investigate the Hall Monitor.", "Challenge 2 - Investigate the Prankster.", "Challenge 3 - Investigate the Influencer.", and "Challenge 4 - Investigate the Quiet Kid.".

2nd Grade Math

Lucky's Map Escape Room



You dared to steal my gold coins! In return, you have been locked in the dungeon of Blarney Castle. Should you wish to return home, I will grant you three wishes. You must find the map and solve the three clues I've left. Only then can you reveal my secret hideout.

1. Find the map to open the door.
2. Alwan the Troll has your next clue under the bridge.
3. Find the rainbow and Fairy Flossy has clue 2.
4. Build a pair of shoes in my workshop and reveal my secret.

After each challenge, add the clue to your notebook.

Sincerely,

Lucky the Leprechaun

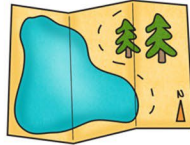
Print and Digital



Print Friendly Version

Challenge #1

1. Solve each addition problem.
2. Record answers on your brochure.
3. Check your answers in the Leprechaun Decoder.
4. Add the map to your notebook.
5. Scan the QR code in the corner of the next page.
6. Move on to the challenge #4.



Scan the QR code or click [here](#) to view the video.



Challenge #3



1. A
 1. Solve each money problem.
 2. Record answers on your brochure.
 3. Check your answers in the Leprechaun Decoder.
 4. Add the fairy to your notebook.
 5. Scan the QR code in the corner of the next page.
 6. Move on to the challenge #4.

+

- a.
- b.
- c.
- d.

2. A
1
+ 2

- a.
- b.
- c.
- d.

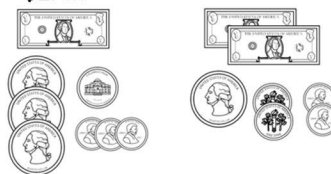
1. Joseph paid for his groceries with 3 dollars, 2 quarters, 3 dimes, and 1 nickel.



How much money did Joseph pay for his groceries?

- a. \$3.75
- b. \$3.65
- c. \$3.85
- d. \$4.00

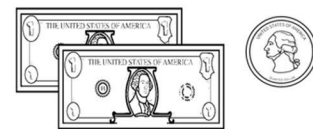
2. Cassandra and Mary had a lemonade stand. Cassandra made \$1.83 and Mary made \$2.47.



How much money did they make together?

- a. \$4.18
- b. \$5.25
- c. \$4.30
- d. \$4.45

3. You had \$4.00 in your pocket. You bought an ice cream cone for \$2.25.



How much money do you have left over?

- \$2.25
- \$3.75
- \$6.25
- \$1.75

Digital Webscape™ & Google Slides

2nd Grade Math

Lucky's Map Escape Room

2nd Grade

Get Started!

You dared to steal my gold coin! In return, you have been left in the dungeon of Blarney Castle. Should you wish to return home, solve my four clues to find my hideout and I will grant you three wishes. You must find the map and solve the three clues I've left for you. Only then can you reveal my secret hideout.

1. Find the map to open the door.
2. Alwan the Troll has your next clue under the bridge.
3. Find the rainbow and Fairy Flossy has clue 2.
4. Build a pair of shoes in my workshop and reveal my hideout.

After each challenge, add the clue to your notebook to find your way.

Sincerely,
Lucky the Leprechaun



Webscape™ is Interactive & Self-Correcting!



Webscape™ Includes Audio Option!

1.



Solve the addition problems.

$$\begin{array}{r} 43 \\ + 26 \\ \hline \end{array} \quad \begin{array}{r} 15 \\ + 34 \\ \hline \end{array} \quad \begin{array}{r} 62 \\ + 24 \\ \hline \end{array} \quad \begin{array}{r} 37 \\ + 51 \\ \hline \end{array}$$

58, 47,
86, 98

69, 49,
86, 88

63, 49,
96, 77

69, 47,
89, 88

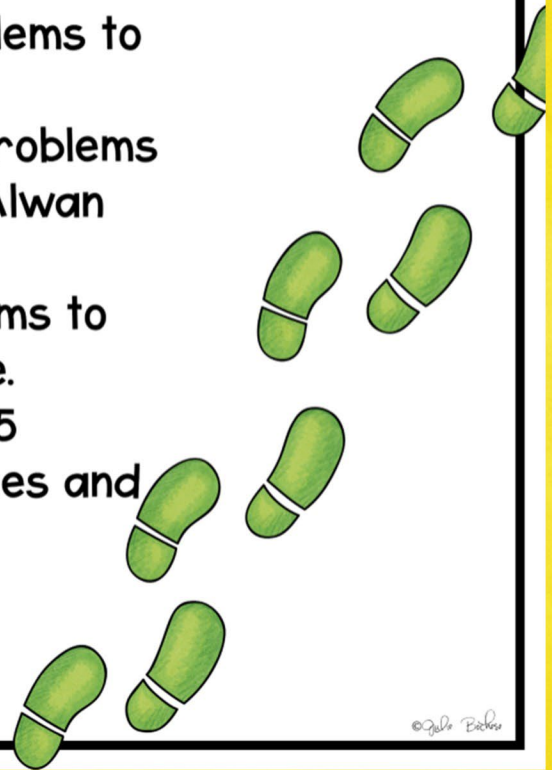
Videos Tell the Story



Four Standards-Based Math

Challenges

1. Solve the addition problems to find the map.
2. Solve the subtraction problems to solve the clue from Alwan the Troll.
3. Solve the money problems to solve Fairy Flossy's clue.
4. Practice telling time to 5 minutes to build the shoes and reveal the hideout.



Challenges are Quick

1.

Money Problems

Joseph paid for his groceries with 3 dollars, 2 quarters, 3 dimes, and 1 nickel.



How much money did Joseph pay for his groceries?

- a. \$3.75
- b. \$3.65
- c. \$3.85
- d. \$4.00



Interactive

You've found the map and opened the door! Cut and paste the map onto your notebook. You will need it later. Then continue to your next challenge.



Printable Version

Includes Recording

Brochure & Decoder

Leprechaun Decoder

Use the following codes for each challenge to solve the clues and move to the next challenge.

	Question 1	Question 2	Question 3	Question 4	Question 5	Question 6
Challenge 1	a = They b = It c = The Book d = It	a = Is b = may be c = Is d = was	a = near b = In c = on d = above	a = the b = its c = a d = the	a = secret b = window c = guest d = creepy	a = ledge. b = study. c = library. d = room.
Challenge 2	a = It b = Merlin's wand c = The wand d = Your wand	a = was b = isn't c = Is d = may be	a = near b = In c = under d = above	a = the b = a c = Merlin's d = our	a = wood b = storage c = red d = large	
Challenge 3	a = Frog Guts b = Bird Beaks c = Old Tires d = Dog Fur	a = Fingernails b = Bat Toe c = Unicorn Snot d = Dryer Lint	a = Fly Buzz b = Ear Wax c = Rose Thorns d = Old Cheese	a = Old Shoes b = Scent of Sweat c = Wet Haggie d = Blood Pudding	a = Hat Sneez b = Cold Feet c = Eagle Fe d = Seashells	
Challenge 4	a = Attack Spell b = Wand Strike c = Shield Spell d = Magic Potion	a = Attack Spell b = Wand Strike c = Shield Spell d = Magic Potion	a = Attack Spell b = Wand Strike c = Shield Spell d = Magic Potion	a = Attack Spell b = Wand Strike c = Shield Spell d = Magic Potion	a = Attack b = Wand S c = Shield S d = Magic F	

CHALLENGE 1



	Answer	Code
1.		
2.		
3.		
4.		
5.		
6.		

Where is the map?

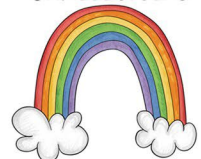
CHALLENGE 2

	Answer	Code
1.		
2.		
3.		
4.		
5.		
6.		

Where did Alwan's clue say to go?



CHALLENGE 3



	Answer	Code
1.		
2.		
3.		
4.		
5.		
6.		

Where did Fairy Flossy's clue say to go?
