

2nd & 3rd Grade

Reading Comprehension

St. Patrick's Day Escape Room

PRINTABLE • GOOGLE • WEBSCAPE™





The world looks a little more green for Saint Patrick's Day, and if you're not wearing a bit of green yourself, you may be in a bit of trouble! The best way to avoid a pinch: make like a leprechaun and fill your closet with green garments!

1. Find some green socks to wear!
2. Find a green shirt to wear!
3. Find a green dress to wear!
4. Find a green hat to wear!



pinch

Let's go!



Collect your green pieces of clothing after each challenge and put them in your closet so you don't get pinched!

Fill your closet with green garments!

Students won't realize they are practicing Reading Comprehension! They will be immersed in the storytelling and our original videos as they complete reading comprehension challenges.

Learn more!



4 Reading Challenges

- Challenges focused on Reading Comprehension.
- Each challenge takes about 20-30 minutes
- 4 long nonfiction passage
- Multiple choice questions
- Passages in 2nd-3rd Grade Text Complexity band (420L-820L)
- Passages and questions are scaffolded

Learn more!



Challenge #1

1. Read the passage and answer the questions.
2. Use your answers to find some answers to wear.
3. Collect the challenge will need

The Season of Spring

There are four seasons on planet Earth - winter, spring, summer, and fall. Spring is the time between the cold winter and the hot summer. Temperatures warm. The days are longer. Flowers bloom. Hibernating animals awaken. Spring officially begins on the **vernal equinox**. "Vernal" means spring, while "equinox" means equal days. During the first day of spring, the hours of daylight and the hours of darkness are the same.

Spring does not occur at the same time over the entire globe. In the Northern Hemisphere, or the upper half of the world where the United States is located, this season starts in March. In the Southern Hemisphere, where Australia is located, spring begins in September. The equator, the imaginary line that divides the Earth into two halves, is the only place where the hours of daylight and the hours of darkness are the same all year long.

Longer hours of sunlight make great for enjoying the outdoors. Activities celebrated during springtime, too. In all spring holidays.



1. What is the main topic of the passage?
 - a. The vernal equinox
 - b. Northern Hemisphere
 - c. St. Patrick's Day
 - d. Spring
2. What is the purpose of the glossary at the end of the passage?
 - a. The glossary helps the reader better understand the passage by providing images.
 - b. The glossary provides the reader with synonyms and antonyms of the bold words in the passage.
 - c. The glossary defines some challenging words in the passage.
 - d. The glossary gives the reader an idea of what the passage ahead is going to focus on.
3. According to the passage, which of the following happen in the springtime?
 - a. snow melts to ice
 - b. flowers bloom
 - c. animals become happy
 - d. people start to wear short sleeves

4 Reading Challenges

- Themed videos integrated throughout the Escape Room to keep kids engaged.
- Students work in groups, partners, or independently.

Learn more!



Challenge #4

1. Read the passage and answer the questions.

2. Use your answers to find a green hat to wear.

3. Collect the clues.

No More Pinching

"Stop pinching me!" Quinn rubbed her arm. "You didn't pinch you," Dougie shifted on the rock where he sat beside Quinn. Quinn angled her arm out toward Dougie. "Then how did I get this red mark?" An angry patch of raised skin formed a circle just above Quinn's elbow. It looked like it hurt.

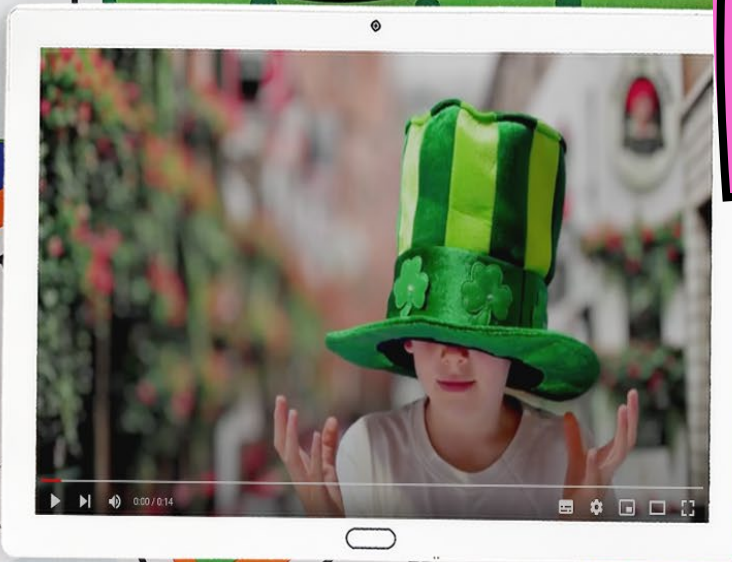
"I don't know, but it wasn't me. I was watching that turtle sun himself on that log," Dougie said. Quinn followed the line of his arm until she saw the

"Ouch!" She stopped her hand over her other arm where she'd felt another pinch. It couldn't have been Dougie because he couldn't reach that side of her. Plus,

"Maybe it's a bee," Dougie said. "I didn't hear any bees."



Scan the QR code or click [here](#) to view the video.



3 Versions

- Print
- Google Slides
- Webscape™ (Our most popular experience)

Learn more!



The Season of Spring

There are four seasons on planet Earth - winter, spring, summer, and fall. Spring is the time between the cold winter and the hot summer. Temperatures warm. The days are longer. Flowers bloom. Hibernating animals awaken. Spring officially begins on the **vernal equinox**. "Vernal" means spring, while "equinox" means equal days. During the first day of spring, the hours of daylight and the hours of darkness are the same.

Spring does not occur at the same time over the entire globe. In the Northern **Hemisphere**, or the upper half of the world where the United States is located, this season starts in March. In the Southern Hemisphere, where Australia is located, spring begins in September. In places closest to the **equator**, the imaginary line that divides the Earth into two equal parts, the temperature stays warm all the time. At the northern and southern poles, the temperatures remain cold all year.

Rain is common during spring. This added **precipitation** along with increased hours of sunlight make great conditions for plants to grow. When it's not raining, the weather is perfect for enjoying the outdoors. Activities such as bicycle riding, gardening, and hiking are common. Many holidays are celebrated during springtime, too. In the Northern Hemisphere, St. Patrick's Day, Earth Day, and Mother's Day are all spring holidays.

Glossary:

equator: (n.) the imaginary line that divides the Earth into two equal parts



The Season of Spring

There are four seasons on planet Earth - winter, spring, summer, and fall. Spring is the time between the cold winter and the hot summer. Temperatures warm. The days are longer. Flowers bloom. Hibernating animals awaken. Spring officially begins on the **vernal equinox**. "Vernal" means spring, while "equinox" means equal days. During the first day of spring, the hours of daylight and the hours of darkness are the same.

Spring does not occur at the same time over the entire globe. In the Northern **Hemisphere**, or the upper half of the world where the United States is located, this season starts in March. In the Southern Hemisphere, where Australia is located, spring begins in September. In places closest to the **equator**, the imaginary line that divides the Earth into two equal parts,




1. What is the main topic of the passage?

The vernal
equinox

Northern
Hemisphere

St. Patrick's
Day

Spring

	PDF 	Google Slides 	Webscape™ 
Format Type	Printable	Digital	Digital
Device	N/A	Any Device	Any Device
Required Prep	Print & Go	Copy & Share	Zero Prep
Student Answers	Printable Answer Pamphlet	Google Sheets Decoder Tool	Integrated Challenge Hub
Self Correcting	Includes Answer Key	Self Correcting	Self Correcting
Custom Videos	QR Codes	Embedded You Tube	Embedded
Audio Readings	N/A	No Audio Readings	Contains Audio Readings
Navigation	N/A	Student Directed	Automatically Advancing
Extras	Early Finish Challenges	Movable Pieces	Interactive Animation

3 Versions

- Print
- Google Slides
- Webscape™ (Our most popular experience)

Learn more!



Print

- Cut and paste stamps for each challenge
- Easy to follow
- Optimal for group or partner work
- Recording brochure for answers
- Self-checking decoder
- Certificate of completion

Learn more!



Leprechaun's Decoder

Use the following codes for each challenge to collect your green clothing and move to the next one.

Challenge 1

Question 1

a = We
b = I
c = Where
d = They

Question 2

a = over
b = the
c = don't
d = where

Question 3

a = they
b = match
c = around
d = the

Question 4

a = but
b = old
c = drawer
d = color

Question 5

a = they'll
b = green
c = right
d = too

Question 6

a = pinched
b = okay!
c = dol
d = small

Challenge 2

Question 1

a = Well
b = The
c = I
d = Not

Question 2

a = great
b = saw
c = chances
d = had

Question 3

a = of
b = thought
c = some
d =

Question 4

a = my
b = t
c = s
d =

Question 5

Challenge 3

Question 1

a = Yes,
b = I
c = Well
d = I've

Question 2

a = got
b = we
c = thought
d = saw

Challenge 4

Question 1

a = I
b = It
c = We
d = The

Question 2

a = will
b = isn't
c = weather
d = are

St. Patrick's Day RECORDING BROCHURE



Record your
challenge answers
during your
mission.

CHALLENGE 3



	Answer	Code
1.	D	I've
2.	A	got
3.		
4.		
5.		
6.		

Where will you find a green
dress to wear today?

Collect your green pieces of clothing after each challenge and put them in your closet so you don't get pinched!



Print

- OOPS! Cards for differentiation

Learn more!



ST. PATRICK'S DAY
Challenge Complete!

Jhon M.

(Name)

has successfully completed the challenge
and dressed in green from head to toe

17 / 03

(Date)

-LUCKY LITTLE LEPRECHAUN



Oops!

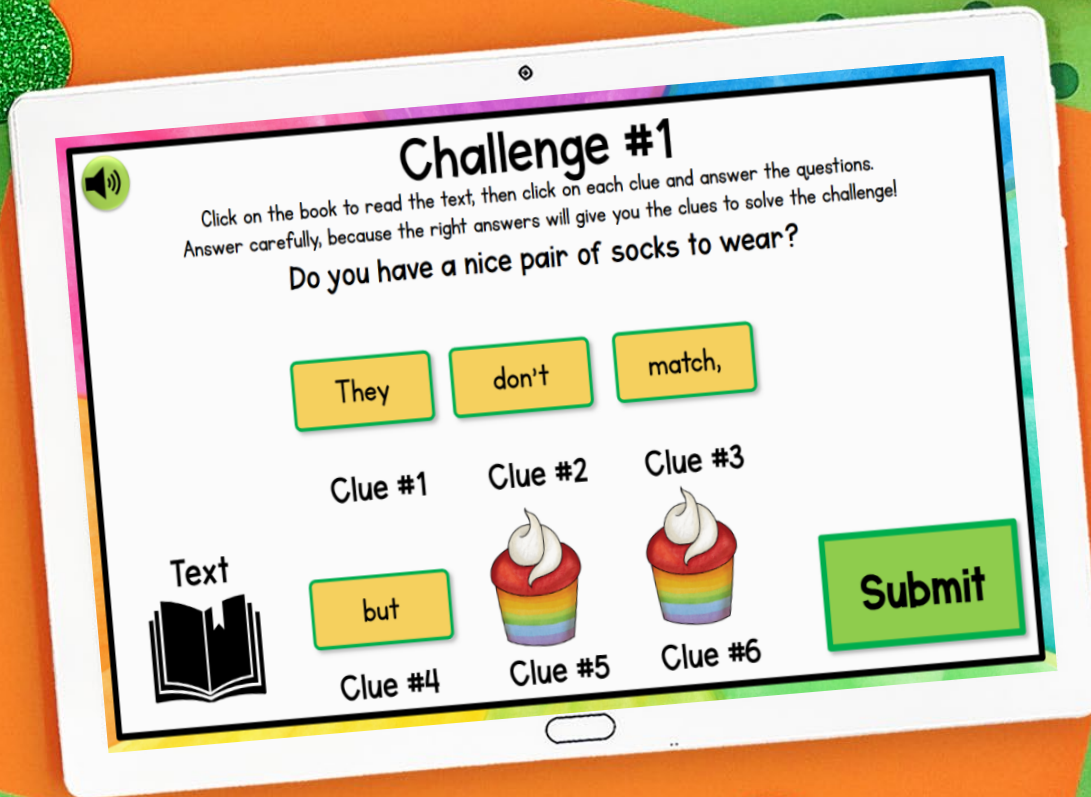
That sneaky leprechaun stole your glasses
because they aren't green!!



NO USING YOUR EYES
FOR 5 MINUTES!



Webscape™



- Most interactive experience
- Self correcting
- Embedded videos
- Embedded audio
- Animation
- Simple navigation

Learn more!



Webscape TM

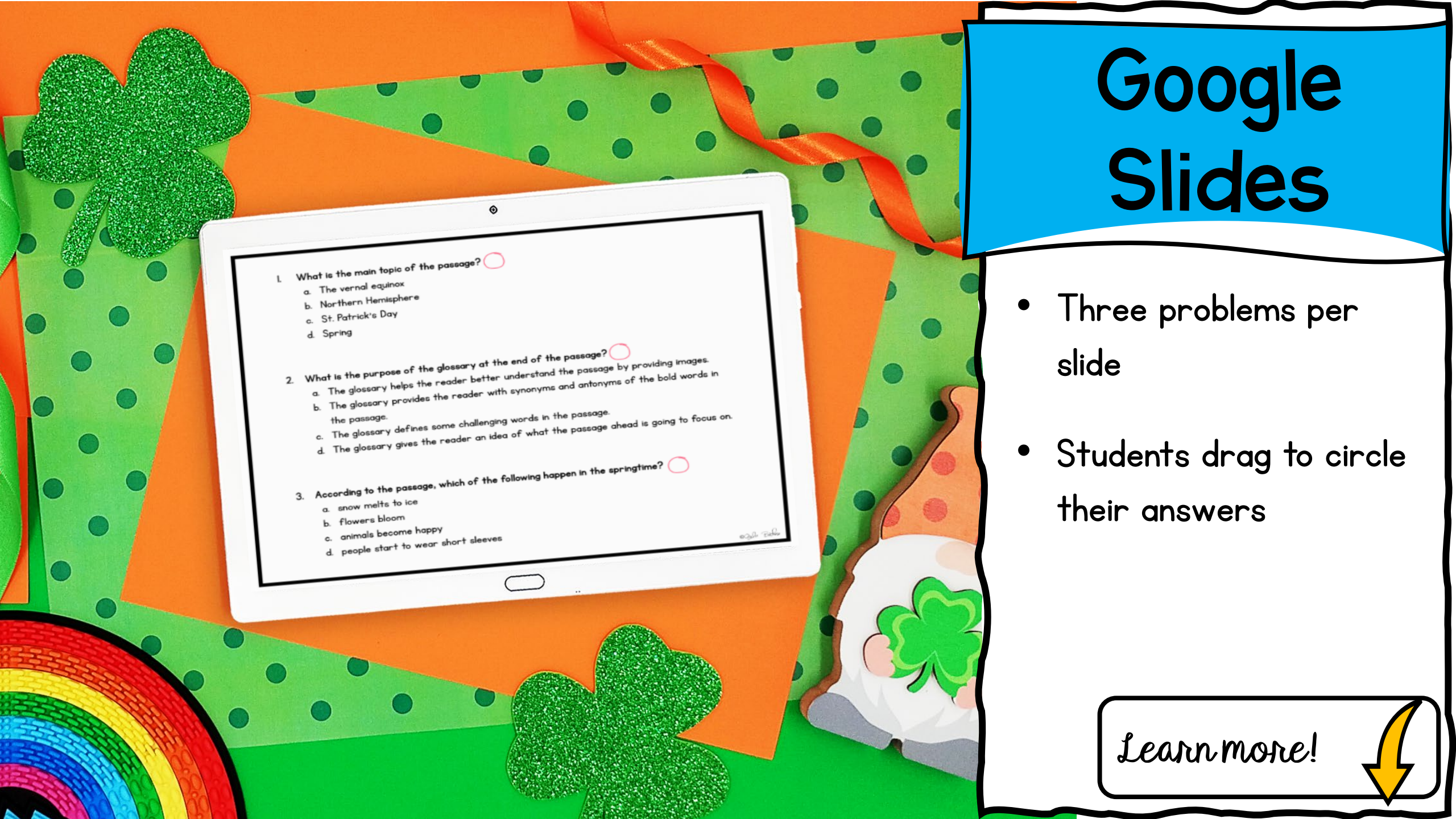


- No log ins or sign ups
- Works with any device that has an internet connection and web browser
- Zero prep! Just share the link with your students.

Learn more!



Google Slides

- 
1. What is the main topic of the passage? ☐
- a. The vernal equinox
 - b. Northern Hemisphere
 - c. St. Patrick's Day
 - d. Spring
2. What is the purpose of the glossary at the end of the passage? ☐
- a. The glossary helps the reader better understand the passage by providing images.
 - b. The glossary provides the reader with synonyms and antonyms of the bold words in the passage.
 - c. The glossary defines some challenging words in the passage.
 - d. The glossary gives the reader an idea of what the passage ahead is going to focus on.
3. According to the passage, which of the following happen in the springtime? ☐
- a. snow melts to ice
 - b. flowers bloom
 - c. animals become happy
 - d. people start to wear short sleeves

- Three problems per slide
- Students drag to circle their answers

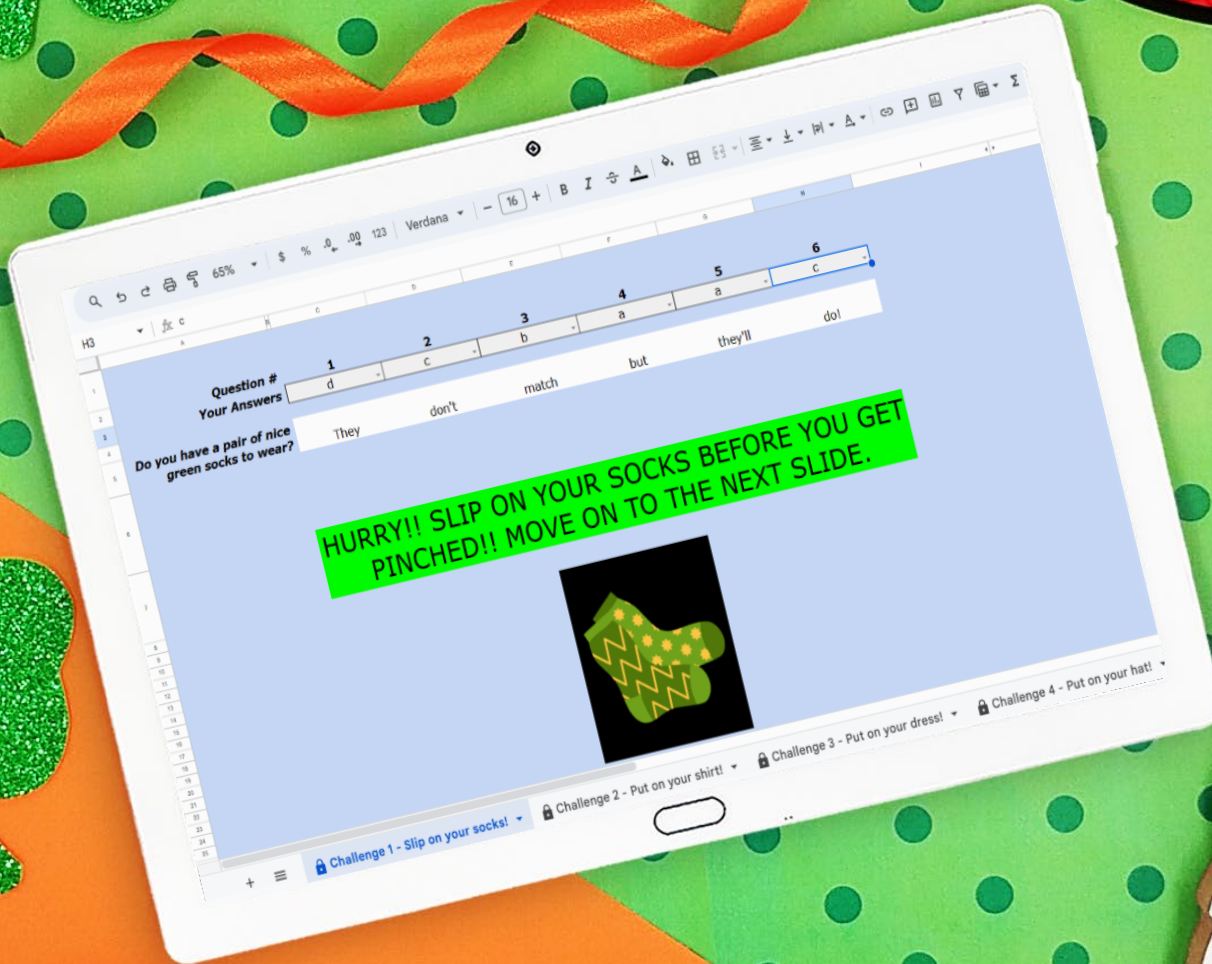
Learn more!



Google Slides

- Toggle to self-checking decoder
- Decoder will prompt at the end of each challenge whether students are correct or need to check their work.

Learn more!



Looking for More?

