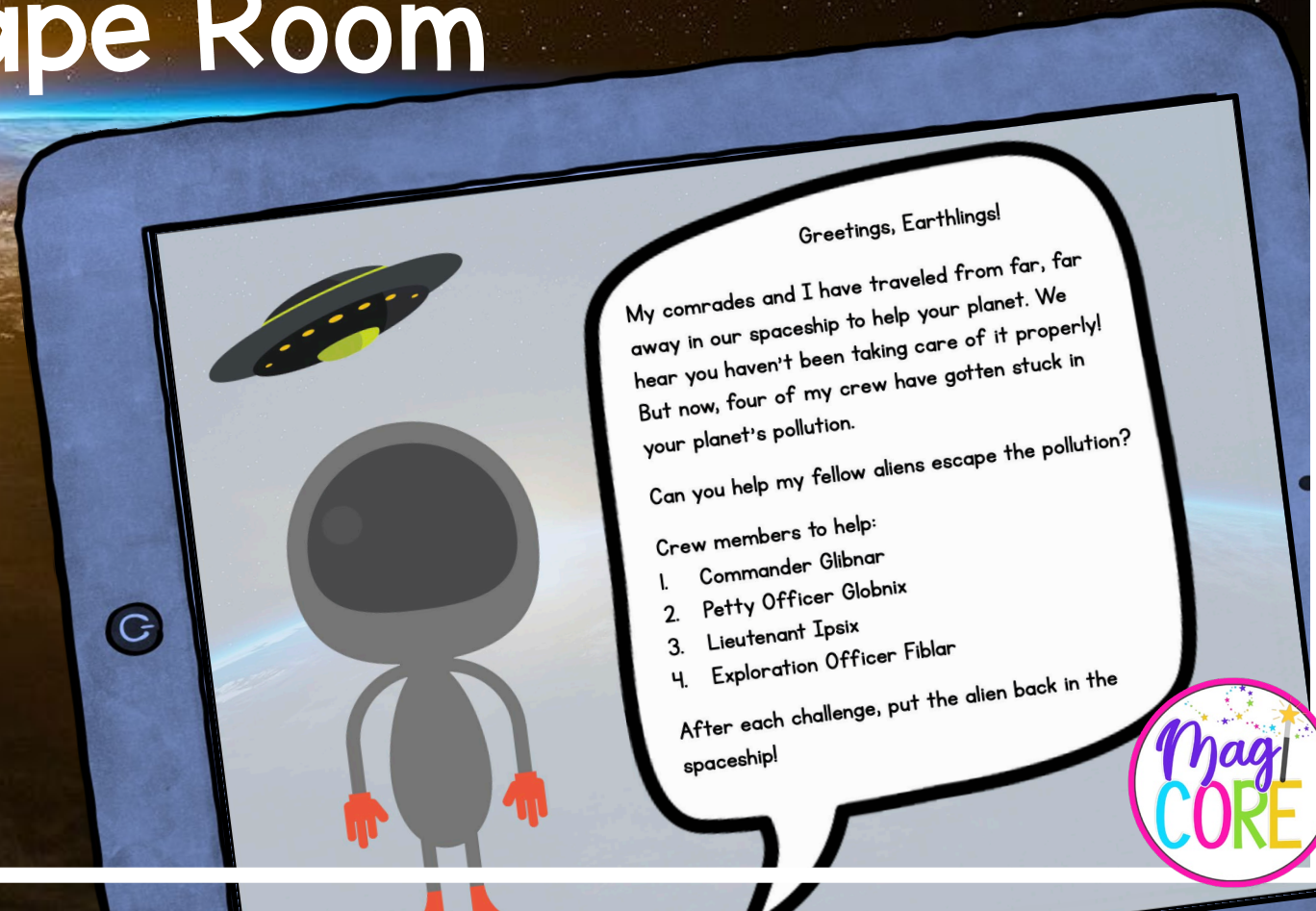
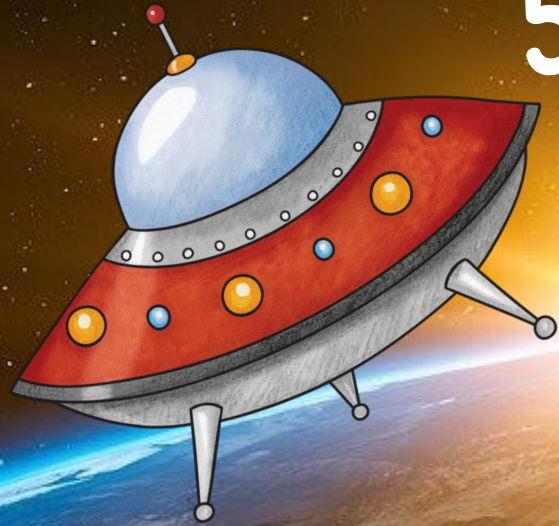


# Earth Day Alien Escape

## 5<sup>th</sup> Grade Math Review

### Escape Room

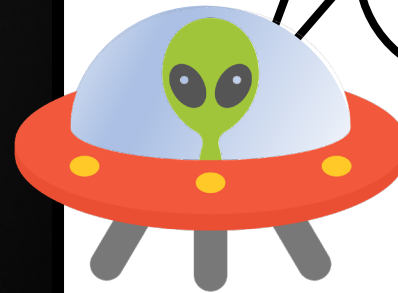


Print & Digital



# Immerse in the Story

You know, we aliens came to Earth to try to help your planet, but now four of my friends are stuck in some pretty polluted places! Please, help me pick them all up before this Earth Day is over.



Learn more!





# 4 Math Challenges

- Standards Based
- Scaffolded

## Challenges

1. Addition and subtraction (2.OA.A.1, 2.NBT.B.7)
2. Place Value (2.NBT.A.1, 2.NBT.B.4)
3. Arrays (2.OA.C.4)
4. Geometry & Fractions (2.G.A.1, 2.G.A.2, 2.G.A.3)

Learn more!



### Challenge #3

1. Solve each problem with decimals.
2. Record answers on your brochure.
3. Check your answers in the Alien Re
4. Put Lieutenant Ipsix in the spacesh
5. Scan the QR code in the corner of
6. Move on to challenge #4.

1. Lieutenant Ipsix travels down fro to a nuclear plant. He brings his G measure the radiation levels near Geiger counter weighs 3.75 pounc ounces in a pound, how many our Geiger counter weigh?

### Challenge #2

1. Solve each problem with fractions.
2. Record answers on your brochure.
3. Check your answers in the Alien Rescue Decoder.
4. Put Petty Officer Globnix in the spaceship.
5. Scan the QR code in the corner of the next page.
6. Move on to challenge #3.

1. An oil tanker ran ashore on a coral reef, and as a result, its 100,000-gallon cargo of oil is slowly leaking into the ocean! During the first day,  $\frac{2}{7}$  of the 100,000

2. A bunch of volunteers have come to the beach to help clean up the oil spill.  $\frac{2}{3}$  of the volunteers are standing on the sand and  $\frac{1}{3}$  of the volunteers are wading in the water. The volunteers in the sand are split into 4 equal-sized groups. One of these groups is responsible for cleaning oil off the seagulls. What fraction of the total number of volunteers are on seagull cleaning duty?

a.  $\frac{2}{7}$

c.  $\frac{8}{3}$

d.  $\frac{2}{12}$

### Challenge #1

Click on each clue and answer the questions. Answer carefully, because the right answers will give you the clues to solve the challenge!

Where was Commander Glibnar hiding?

We were

Clue #1

Clue #2

Clue #3

Submit

Clue #4

Clue #5

Clue #6



# 3 Versions

- Print
- Google Slides
- Webscape™ (Our most popular experience)

Learn more!



## Challenge #3

1. Solve each problem with decimals.
2. Record answers on your brochure.
3. Check your answers in the Alien Rescue Decoder.
4. Put Lieutenant Ipsix in the spaceship.
5. Scan the QR code in the corner of the next page.
6. Move on to challenge #4.

1. Lieutenant Ipsix travels down from a nuclear plant. He brings his Geiger counter which weighs 3.75 pounds. How many ounces does the Geiger counter weigh?

## Challenge #2

1. Solve each problem with fractions.
2. Record answers on your brochure.
3. Check your answers in the Alien Rescue Decoder.
4. Put Petty Officer Globnix in the spaceship.
5. Scan the QR code in the corner of the next page.
6. Move on to challenge #3.

1. An oil tanker ran ashore on a coral reef, and as a result, its 100,000-gallon cargo of oil is slowly leaking into the ocean! During the first day,  $\frac{2}{7}$  of the oil was cleaned up. How much oil was left?

2. A bunch of volunteers have come to the beach to help clean up the oil spill.  $\frac{2}{3}$  of the volunteers are standing on the sand and  $\frac{1}{3}$  of the volunteers are wading in the water. The volunteers in the sand are split into 4 equal-sized groups. One of these groups is responsible for cleaning oil off the seagulls. What fraction of the total number of volunteers are on seagull cleaning duty?

a.  $\frac{2}{7}$

c.  $\frac{8}{3}$

d.  $\frac{2}{12}$

Globnix descends from the spaceship to clean-up. When Officer Globnix lands, 22,312 gallons of oil have already leaked into the water. The volunteers successfully cleaned up  $\frac{1}{8}$  of the oil. How much oil has been cleaned up?

a. 3,012 gallons

d. 2,847 gallons

3.

## SOLVE THE PROBLEM




None of the residents of Smog City walk, bike, or take public transportation. They all drive their own cars everywhere! Commander Glibnar saw 39 red cars drive by. He saw 4 times as many black cars as red cars, and 26 fewer white cars than black cars. Which equation shows the number of white cars Commander Glibnar saw?

$39 \times (26 - 4)$

$26 - (39 \times 4)$

$(4 + 39) - 26$

$(39 \times 4) - 26$

	<b>PDF</b> 	<b>Google Slides</b> 	<b>Webscape™</b> 
<b>Format Type</b>	Printable	Digital	Digital
<b>Device</b>	N/A	Any Device	Any Device
<b>Required Prep</b>	Print & Go	Copy & Share	Zero Prep
<b>Student Answers</b>	Printable Answer Pamphlet	Google Sheets Decoder Tool	Integrated Challenge Hub
<b>Self Correcting</b>	Includes Answer Key	Self Correcting	Self Correcting
<b>Custom Videos</b>	QR Codes	Embedded You Tube	Embedded
<b>Audio Readings</b>	N/A	No Audio Readings	Contains Audio Readings
<b>Navigation</b>	N/A	Student Directed	Automatically Advancing
<b>Extras</b>	Early Finish Challenges	Movable Pieces	Interactive Animation

## 3 Versions

- Print
- Google Slides
- Webscape™ (Our most popular experience)

*Learn more!*





# Print

- Low prep
- Paper Saving
- Optional QR codes so students experience videos

Learn more!



## Challenge #1

1. Solve each multiplication or division problem.
2. Record answers on your brochure.
3. Check your answers in the Alien Rescue Decoder.
4. Put Commander Glibnar in the spaceship.
5. Scan the QR code in the corner of the next page.
6. Move on to challenge #2.



2. The petroleum refining plant in Smog City has lots of smokestacks that spew smoke and exhaust into the sky. The height of the tallest smokestack is represented by the equation below. How tall is the tallest smokestack?

$$[19 \times (30 \div 6)] + (24 - 8)$$

- a. 121 feet
- b. 11 feet
- c. 118 feet
- d. 132 feet

3. None of the residents of Smog City walk, bike, or take public transportation. They all drive their own cars everywhere! Commander Glibnar saw 39 red cars drive by. He saw 4 times as many black cars as red cars, and 26 fewer white cars than black cars. Which equation shows the number of white cars Commander Glibnar saw?

- a.  $39 \times (26 - 4)$
- b.  $26 - (39 \times 4)$
- c.  $(4 \times 39) - 26$
- d.  $(39 \times 4) - 26$

1. Smog City has lots of factories and, as a result, it is very smoggy. There are 288 factories in the 32 square mile area of Smog City. If there are an equal number of factories per square mile, how many factories per square mile are there in Smog City?

- a. 8 factories
- b. 9 factories
- c. 12 factories
- d. 14 factories

6. The landfill in Smog City is overflowing, so every day they have to burn 34 truckloads of trash. If the month of January has 31 days, how many truckloads of trash were burned in Smog City in January?

- a. 1,240 truckloads
- b. 1,082 truckloads
- c. 1,054 truckloads
- d. 1,126 truckloads

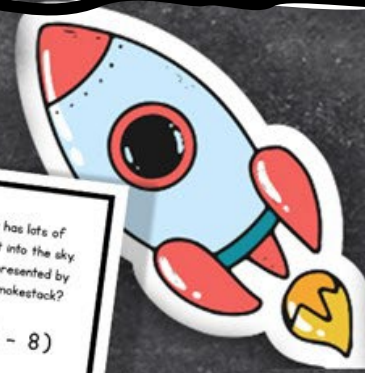
4. Commander Glibnar tries using his Air Purifying Laser to clean the air in Smog City. The laser runs for 48 minutes before it runs out of batteries. Commander Glibnar ran the laser for 624 minutes. How many batteries did the laser use up?

- a. 23 batteries
- b. 16 batteries
- c. 11 batteries
- d. 13 batteries

5. Commander Glibnar is counting the vehicles stuck in a traffic jam. There are 12,192 vehicles in the traffic jam spread equally across 16 lanes of the highway. How many vehicles are in each lane of the highway?

- a. 762 vehicles
- b. 748 vehicles
- c. 766 vehicles
- d. 724 vehicles

Scan the QR code or click [here](#) to view the video.

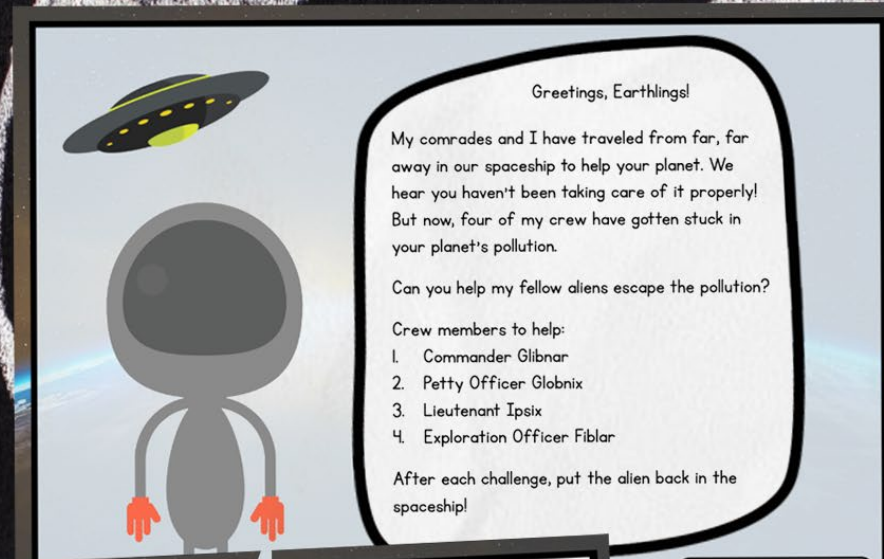




# Print

- Cut and paste stamps for each challenge
- Easy to follow
- Optimal for group or partner work

Learn more!



Scan the QR code or click [here](#) to watch the video



The petroleum refining plant in Smog City has lots of smokestacks that spew smoke and exhaust into the sky. The height of the tallest smokestack is represented by the equation below. How tall is the tallest smokestack?

$$9 \times (30 \div 6) ] + (24 - 8)$$

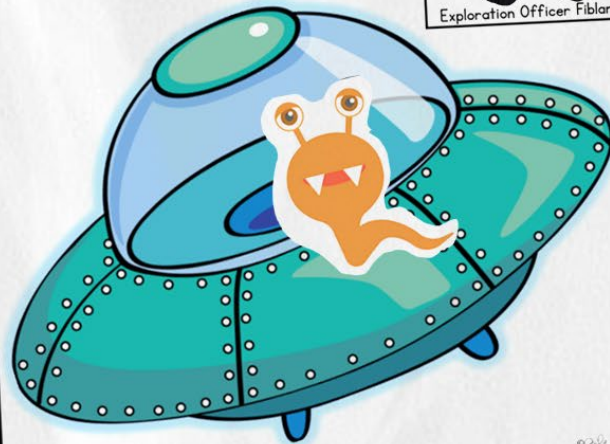
- a. 121 feet      c. 118 feet  
b. 111 feet      d. 132 feet

factories per square mile, per square mile are there in

3. None of the residents of Smog City walk, bike, or take public transportation. They all drive their own cars everywhere! Commander Glibnar saw 39 red cars drive by. He saw 4 times as many black cars as red cars, and 26 fewer white cars than black cars. Which equation shows the number of white cars Commander Glibnar saw?

- a.  $39 \times (26 - 4)$       c.  $(4 + 39) - 26$   
b.  $26 - (39 \times 4)$       d.  $(39 \times 4) - 26$

Cut out each alien. After each challenge, paste the alien into the spaceship. Once all the aliens are safely back on the ship, they can return home!



Exploration Officer Fiblar



Lieutenant Ipsix



Commander Glibnar



Petty Officer Globnix





# Print

- Recording brochure for answers
- Self-checking decoder
- Certificate of completion

Learn more!



 **Alien Rescue Decoder** 

Use the following codes for each challenge to solve the clues and move to the next challenge.

Challenge 1	question 1	question 2	question 3	question 4	question 5	question 6
a = We were	a = going	a = near	a = when the	a = of old	a = factory.	
b = He was	b = hiding	b = because	b = smokestack	b = to his	b = spaceship.	
c = He had	c = into	c = among	c = pollution	c = when the	c = trees.	
d = There was	d = called	d = underneath	d = a pile	d = since	d = windows.	

Challenge 2	question 1	question 2	question 3	question 4	question 5	question 6
a = He was	a = water	a = dish soap.	a = because	a = a little	a = of tanker.	
b = With a	b = cleaning	b = and	b = sometimes	b = on the beach.	b = on the beach.	
c = First you	c = him	c = volunteer	c = washing	c = lots of	c = back home.	
d = Not ...			d = but then	d = he goes	d = scrubbing.	

question 4	question 5	question 6
a = underground	a = the	a = quickly.
b = radioactive	b = out	b = nuclear plant.
c = chasing	c = help him	c = afterwards.
d = into	d = running	d = immediately.

## EARTH DAY ALIEN RESCUE

(name)

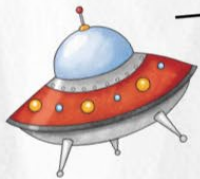
has successfully saved all the  
aliens from the Earth's pollution!

Scan the QR code  
or click [here](#) to  
view the video



(Date)

Thank you, Earthling!



### CHALLENGE 1



	Answer	Code
1.		
2.		
3.		
4.		
5.		
6.		

Where was Commander  
Glibnar hiding?

### CHALLENGE 2

Answer	Code
1.	
2.	
3.	
4.	
5.	
6.	

How can you clean all  
the oil off Petty Officer  
Globnix?



### CHALLENGE 3



Answer	Code
1.	
2.	
3.	
4.	
5.	
6.	

How can you help  
Lieutenant Ipsix escape  
from the nuclear plant?





**OOPS!**  
You forgot to recycle!



**OOPS!**  
Your eyes are irritated from the smog!



YOU MUST BE BLINDFOLDED FOR 5  
MINUTES. NO USING YOUR EYES  
DURING THIS TIME!

**OOPS!**  
You need to clean up!



NO HELPING YOUR TEAM  
FOR 3 MINUTES!

**Print**

- OOPS! Cards for differentiation

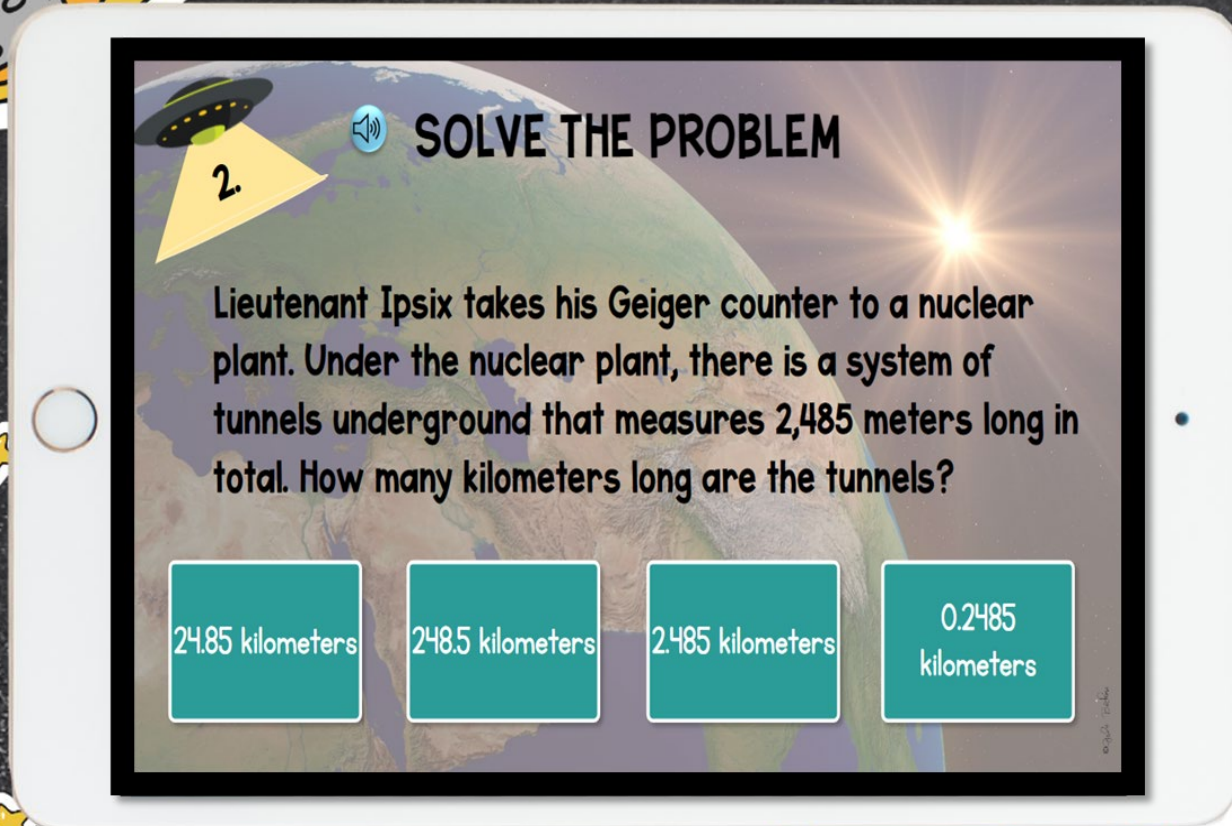
*Learn more!*



# Webscape <sup>TM</sup>

- Most interactive experience
- Self correcting
- Embedded videos
- Embedded audio
- Animation
- Simple navigation

Learn more!





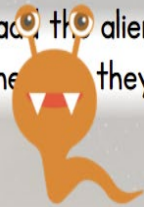
# Webscape <sup>TM</sup>

- Most interactive experience
- Self correcting
- Embedded videos
- Embedded audio
- Animation
- Simple navigation

Learn more!

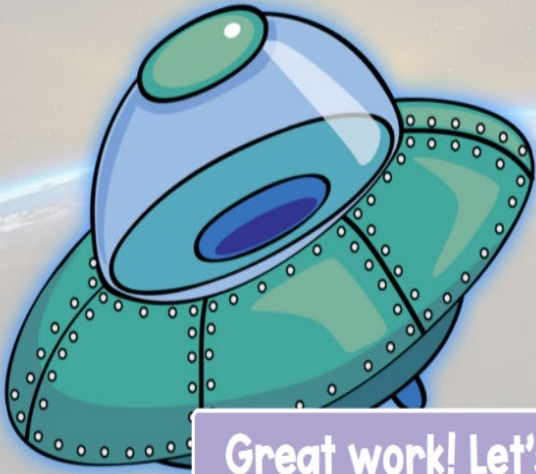


Collect each alien. After each challenge, add the alien into the spaceship.  
Once all the aliens are safely back on the spaceship they can return home!



Click the spaceship  
to collect your alien!

Great work! Let's keep going!



# Google Slides

1

## SOLVE THE PROBLEM.

From his spaceship, Exploration Officer Fiblar spots some interesting ice formations floating in the ocean. He sees one chunk of ice with the characteristics below. What is the shape of the ice?

- Has 4 sides
- Has one pair of parallel sides
- Has one pair of equal sides
- Has two acute angles
- Has two obtuse angles

a. Rhombus

c. Trapezoid

b. Parallelogram

d. Rectangle

Drag to circle  
your answer



©2016 Bobbi

- One problem per slide
- Students drag to highlight answer

Learn more!

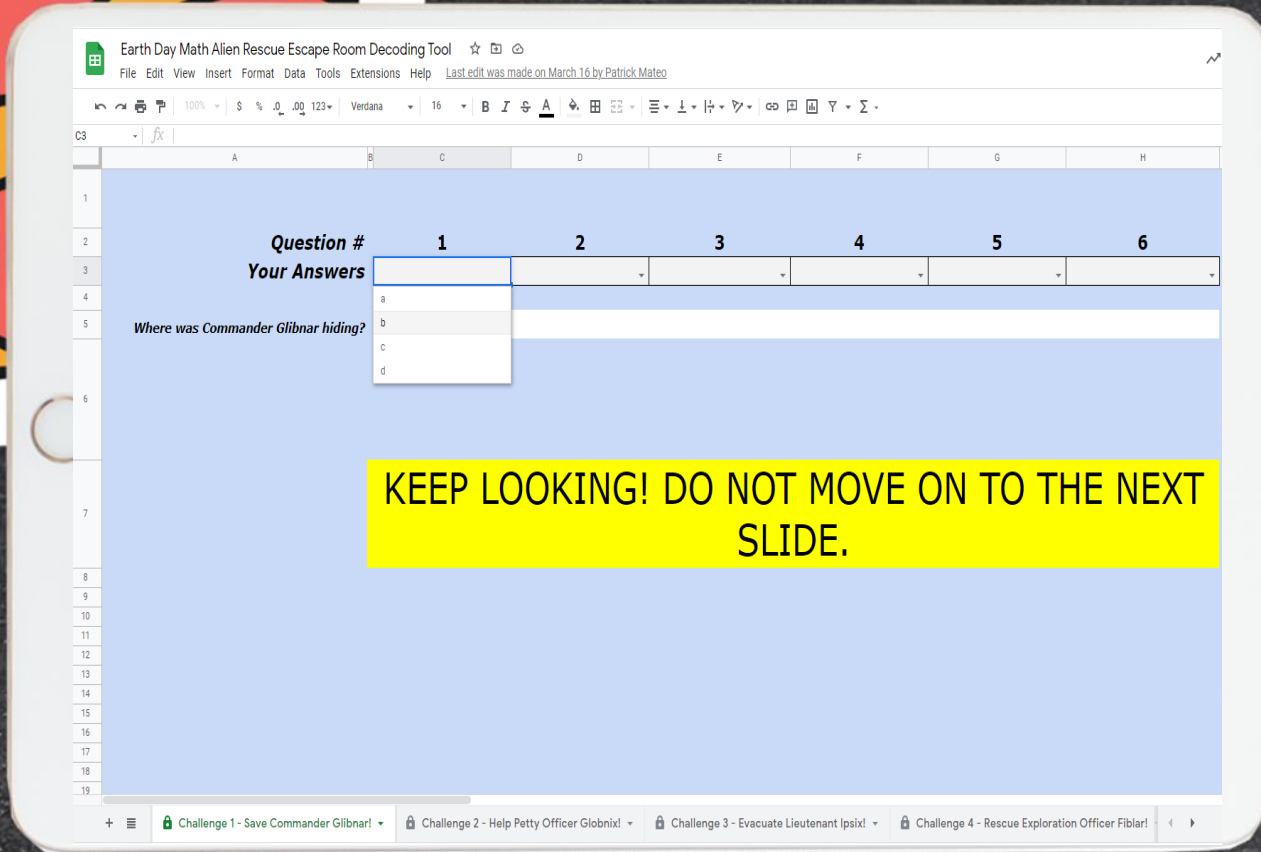




# Google Slides

- Toggle to self-checking decoder
- Decoder will prompt at the end of each challenge whether students are correct or need to check their work.

Learn more!





# Looking for More?

