

3.MD.D.8

SOLVE REAL WORLD AND MATHEMATICAL PROBLEMS INVOLVING PERIMETERS OF POLYGONS

TASK CARDS



ANSWER SHEET

Name: _____ Date: _____

Card#	Answer	Card#	Answer
1.			
2.			
3.			
4.			
5.			
6.			
7.			

17 AREA & PERIMETER
Find the area and the perimeter.

P = ft
A = ft²

18 AREA & PERIMETER
Find the area and the perimeter.

P = ft
A = ft²

AREA & PERIMETER
Carla says these two shapes have the same perimeter. Is she correct?

19 AREA & PERIMETER
Find the area and the perimeter.

20 AREA & PERIMETER
Find the area and the perimeter.

P =

AREA & PERIMETER CHALLENGE

How do you find the perimeter of a shape?

Add _____

Multiply and then _____

AREA & PERIMETER

Is the perimeter correct?

P = 30 cm



PRINTABLE AND DIGITAL

- 30 PRINT-AND-GO TASK CARDS
- READY TO USE FOR CENTERS

ANSWER SHEET

Name: _____ Date: _____

Card#	Answer	Card#	Answer
1.		16.	
2.		17.	
3.		18.	
		19.	
		20.	
		21.	
		22.	
		23.	
		24.	
		25.	



21 AREA & PERIMETER

Is the perimeter correct?

$P = 30 \text{ cm}$

Yes

No

22 AREA & PERIMETER

Is the perimeter correct?

$P = 26 \text{ cm}$

Yes

No

23 AREA & PERIMETER

Is the perimeter correct?

$P = 35 \text{ cm}$

Yes

No

24 AREA & PERIMETER

Is the perimeter correct?

$P = 32 \text{ in}$

Yes

No

9 AREA & PERIMETER

Add the length of all sides to find the perimeter of the polygon.

$P = \square \text{ in.}$

10 AREA & PERIMETER

Add the length of all sides to find the perimeter of the polygon.

$P = \square \text{ in.}$

11 AREA & PERIMETER

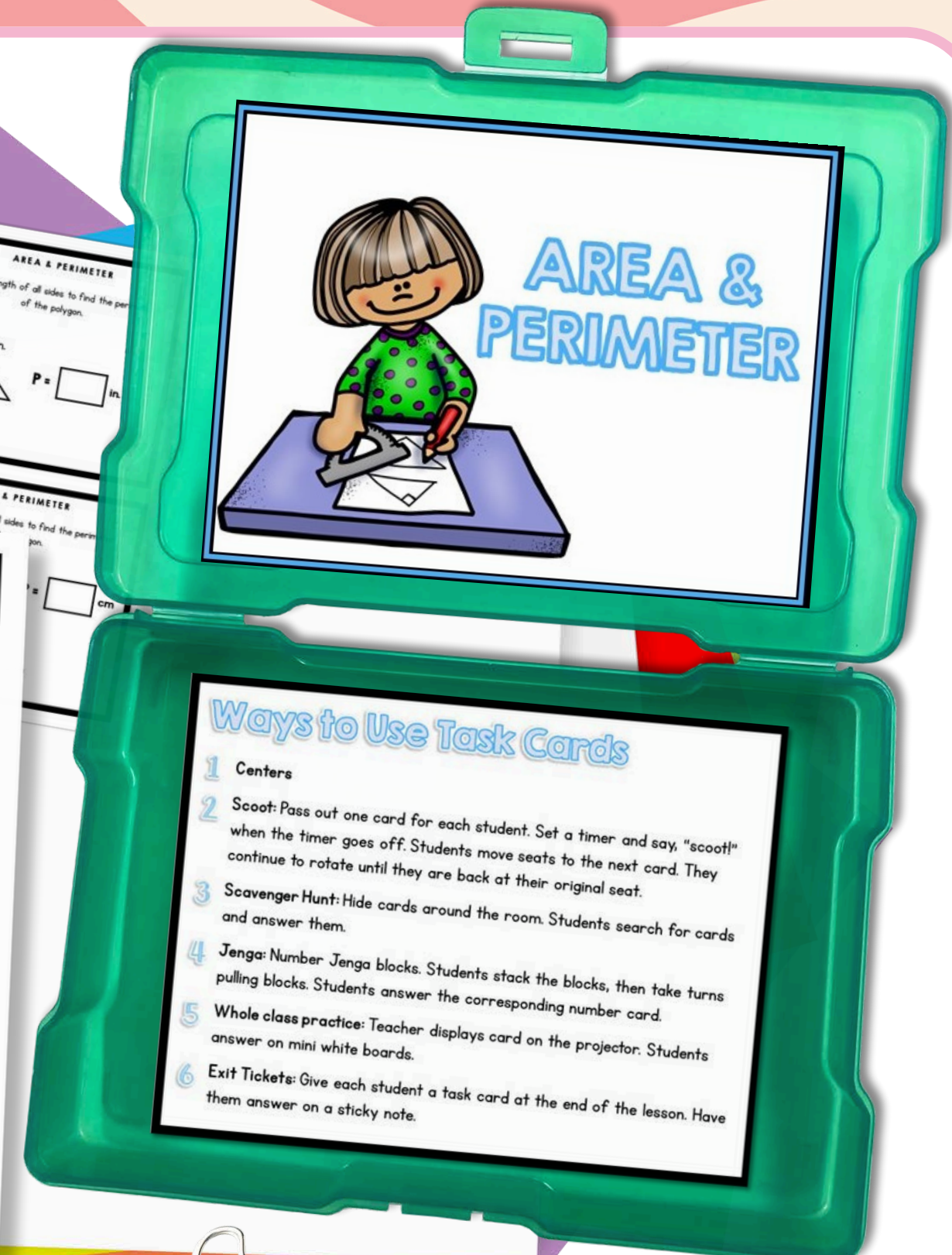
Add the length of all sides to find the perimeter of the polygon.

$P = \square \text{ cm.}$

12 AREA & PERIMETER

Add the length of all sides to find the perimeter of the polygon.

$P = \square \text{ cm.}$



SELF CORRECTING, INCLUDES REPORTING CERTIFICATE

17

AREA & PERIMETER

Find the area and the perimeter.

7 ft

P =

A =

19

AREA & PERIMETER

Find the area and the perimeter.

4 ft

1 ft

P =

A =

5

AREA & PERIMETER

Write the missing side length, and find the perimeter.

6 in.

P =

6

AREA & PERIMETER

Write the missing side length, and find the perimeter.

5 in.

8 in.

P = in.

AREA & PERIMETER

Write the missing side length, and find the perimeter.

1 in.

P = in.

INCORRECT

The correct answer is 5, P=26.

5 in.

CONTINUE



SHUFFLES CARDS, SO STUDENTS CAN PRACTICE MORE THAN ONCE

ANSWER SHEET

Card#	Answer	Card
1.		
2.		
3.		
4.		

AREA & PERIMETER CHALLENGE

How do you find the perimeter of a shape?

Add all the side lengths together.

Multiply the length and the width.

15.

AREA & PERIMETER

Add the length of all sides to find the perimeter.

5 in.

3 in.

AREA & PERIMETER

Add the length of all sides to find the perimeter.

4 in.

30

AREA & PERIMETER

Find the side length, and find the perimeter.

P = in.

2 cm

1 cm

3 cm

Carla says that since they have the same area, they also have the same perimeter. Is she correct?

AREA & PERIMETER

Find the side length, and find the perimeter.

P =

AREA & PERIMETER

Find the side length, and find the perimeter.

P =

Is the area correct?

8 cm

A = 32 sq cm

Yes

No

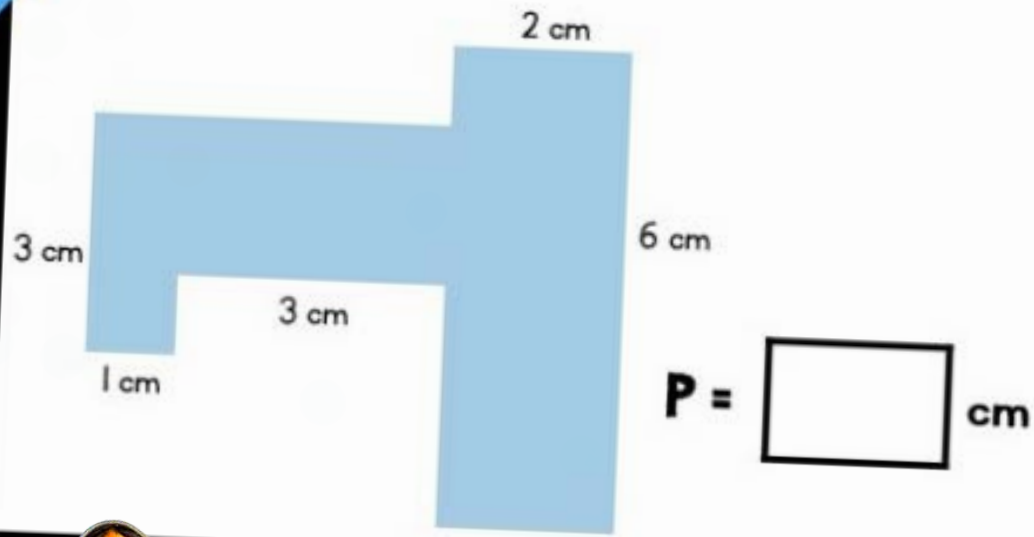
© Julie B

STANDARDS ALIGNED

16

AREA & PERIMETER

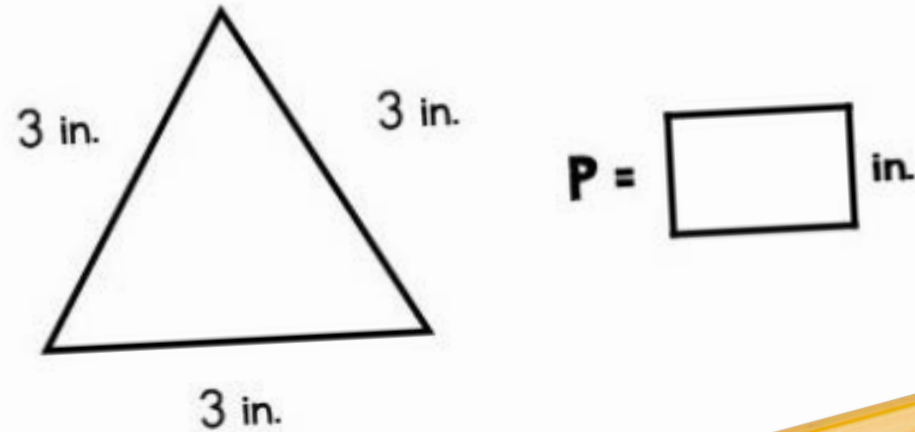
Add the length of all sides to find the perimeter of the polygon. Be careful: Some side lengths are missing!



9

AREA & PERIMETER

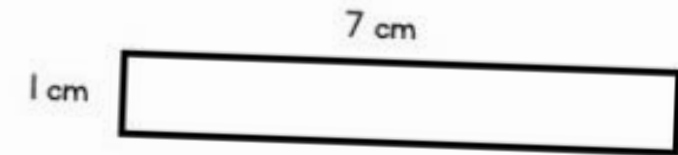
Add the length of all sides to find the perimeter of the polygon.



27

AREA & PERIMETER

Is the area correct?



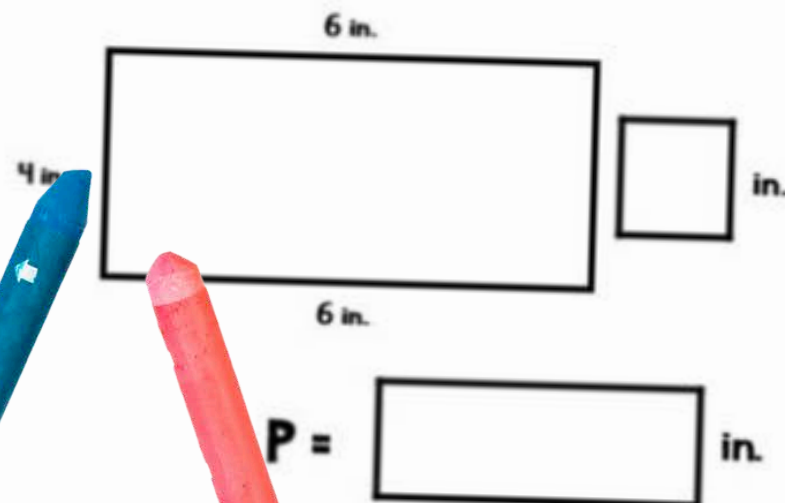
Yes

No

5

AREA & PERIMETER

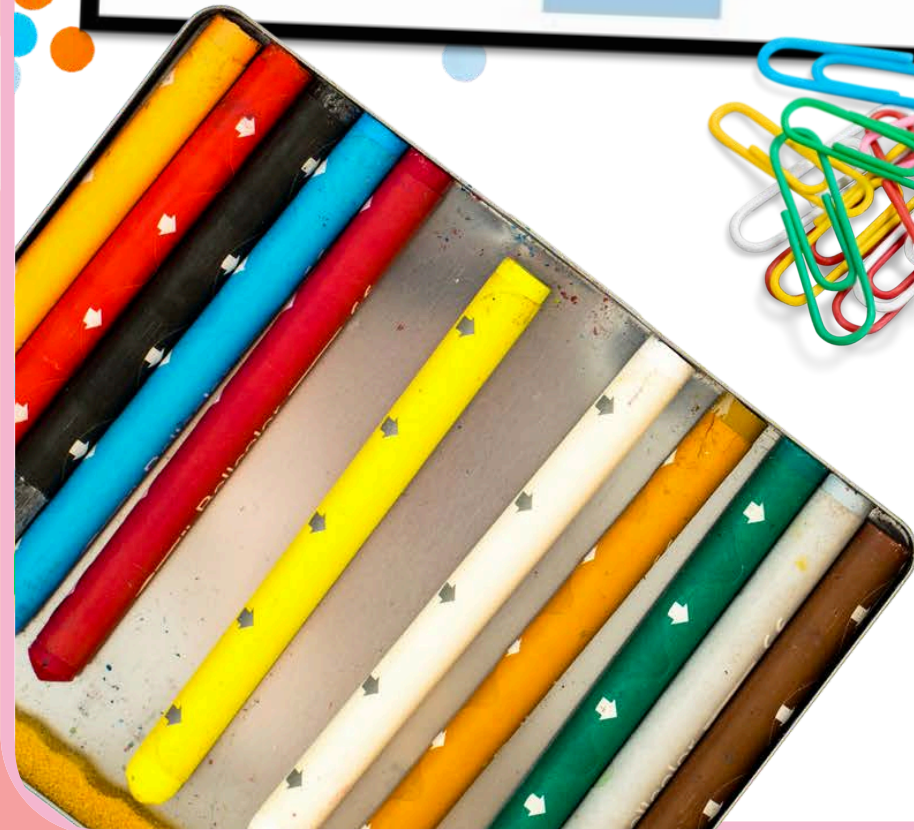
Write the missing side length, and find the perimeter.



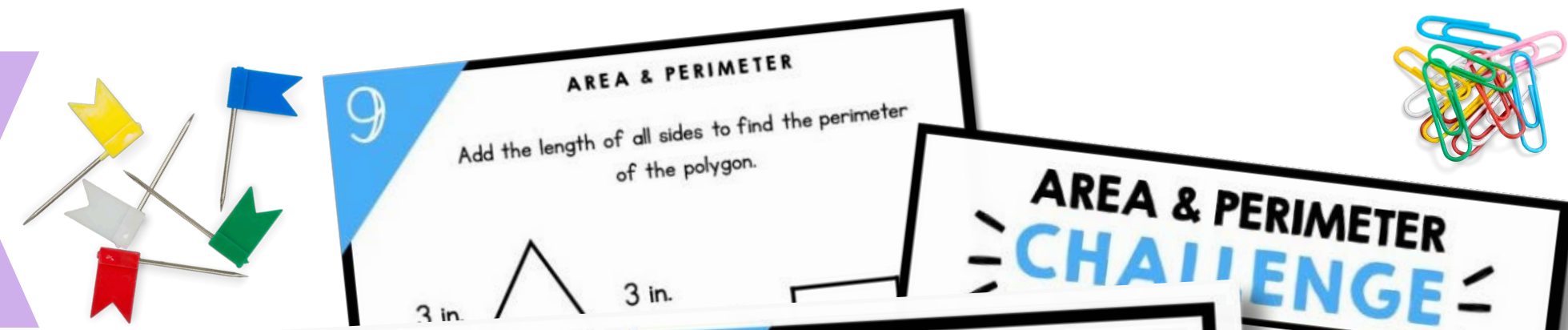
30

AREA & PERIMETER

Carla says that since they have the same area, they also have the same perimeter. Is she correct?



USE OVER AND OVER FOR CENTERS, GAMES, AND REVIEW



ANSWER SHEET

Name: _____ Date: _____

Card#	Answer	Card#
1.		16.
2.		17.
3.		18.
4.		19.
5.		20.
6.		21.
7.		22.
8.		23.

ANSWER SHEET

Date: _____ Answer: _____

1 AREA & PERIMETER
Add the length of all sides to find the perimeter.
5 in. 3 in.

2 AREA & PERIMETER
Add the length of all sides to find the perimeter.
4 in. 4 in. P = in.

3 AREA & PERIMETER
Add the length of all sides to find the perimeter.

4 AREA & PERIMETER
Add the length of all sides to find the perimeter.
4 in. 7 in. P = in.

5 AREA & PERIMETER
Add the length of all sides to find the perimeter.

6 AREA & PERIMETER
Add the length of all sides to find the perimeter.

7 AREA & PERIMETER
Add the length of all sides to find the perimeter.

8 AREA & PERIMETER
Add the length of all sides to find the perimeter.

9 AREA & PERIMETER
Add the length of all sides to find the perimeter of the polygon.
3 in. 3 in.

25 AREA & PERIMETER
Is the area correct?
5 cm A = 25 sq cm
 Yes
 No

26 AREA & PERIMETER
Is the area correct?
8 cm A = 32 sq cm
 Yes
 No

27 AREA & PERIMETER
Is the area correct?
1 cm 7 cm A = 16 sq cm
 Yes
 No

28 AREA & PERIMETER
Is the area correct?
1 cm 7 cm A = 7 sq cm
 Yes
 No

29 AREA & PERIMETER
Is the area correct?
A = 16 sq cm
 Yes
 No

30 AREA & PERIMETER
Add the length of all sides to find the perimeter. Be careful: Some sides are not straight.
2 cm 6 cm 3 cm 3 cm 1 cm

AREA & PERIMETER CHALLENGE

Add all the sides.

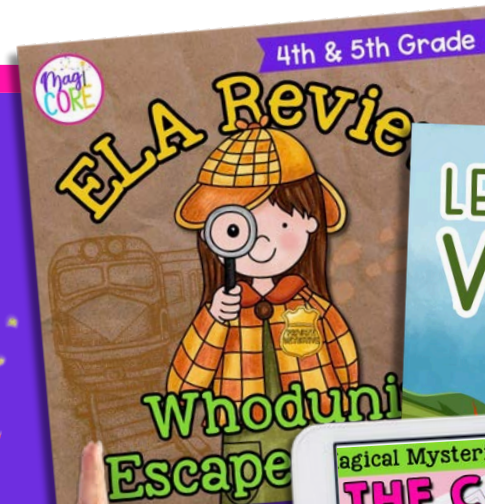
Multiply the length and the width.



A digital platform that empowers teachers and parents to transform learning through virtual exploration.

WHAT'S INSIDE?

Unlimited access to over 1,000 digital interactive resources for a variety of subjects, topics, and seasons.



MAGICCOREACADEMY.COM