

# NOVEL STUDY

# Because of Winn-Dixie



reading section 4 << Click here to go back to the directions page!

## Design Your Own Candy

Consider the qualities of the Littmus Lozenge:

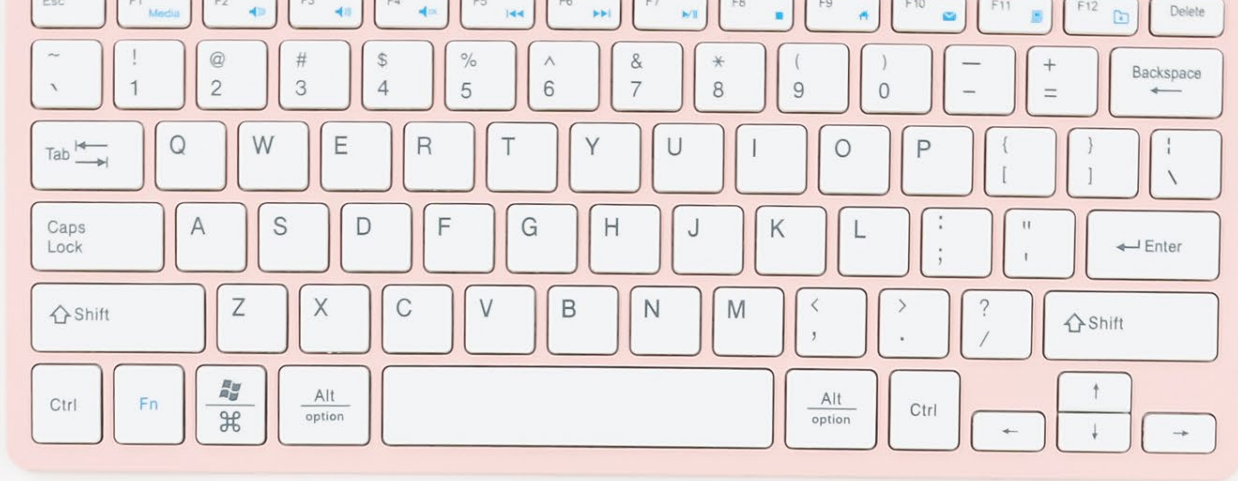
- it is a candy
- it is meaningful to the inventor
- it has a tasty flavor, and an emotional flavor
- everyone who eats one can connect with the emotion in their own way
- people can describe it in many different ways

Now, design your own candy that has as many of these qualities as possible. You can create a candy that tastes any way that is meaningful to you. Once you've thought of your candy, fill out the chart to the right and upload a drawing of it.

MY CANDY IS
MY CANDY IS
HOW MY CANDY
WHY I CREATED THIS CANDY

Print & Google Slides





## Color and Blackline Versions

getting started

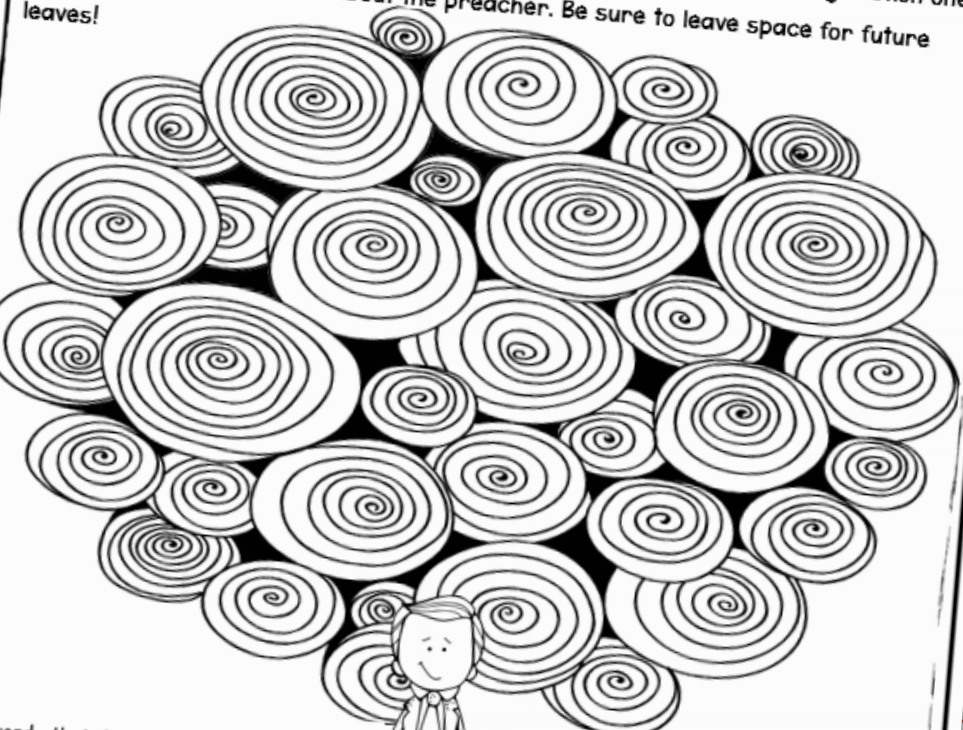
### Making Predictions

Consider the words in the speech bubbles: community, loneliness, sorrow, and friendship. Based on your understanding of these words and the cover of the novel, what do you think *Because of Winn-Dixie* might be about? Write your prediction below.

Reading section I

### Character Tree: The Preacher

Throughout this novel guide, you will complete this character tree by gathering information and quotes from the text to describe the preacher. On future pages, you will be asked to think about ways in which he has grown or changed, and then return to this page to add that information to his tree. Right now, after reading section one, fill out the 3 "leaves" below about the preacher. Be sure to leave space for future leaves!



words that describe the preacher's personality:

1 of the preacher's fears:



reading section 2

# Section Two Summary

First, read the scrambled events below that occurred in order by rewriting the text in the correct box. Then, re-read how they all might be connected.

1.

2.

3.

4.



Gloria Dump asks Opal to tell her about herself, and then they plant a tree together.

Miss Franny tells Opal and Winn-Dixie a story about how her father gave her a library for her birthday.

S

reading section 4

# Design Your

Consider the qualities of the Littmus Lozenge:

- it is a candy
- it is meaningful to the inventor
- it has a tasty flavor and an emotional flavor
- everyone who eats one can connect with the emotion
- people can describe it in many different ways

Now, design your own candy that has as many of these qualities as you can. Create a candy that tastes any way that is meaningful to you. For your candy, fill out the chart to the right and draw a picture.

MY NEW CANDY'S NAME:

MY CANDY FLAVORS:

HOW MY CANDY WILL MAKE PEOPLE FEEL:

WHY I CREATED THIS CANDY:

A PICTURE OF MY CANDY:

Finishing up

# Show What You Know!

1. What does Gloria call her world-famous beverage?

- a. Dump Punch
- b. Drink Up
- c. Bottle Tree
- d. Fairyland

2. How does Otis feel upon arriving at Gloria Dump's house?

- a. excited
- b. bored
- c. nervous
- d. relaxed

3. Who asks Opal if she wants help looking for Winn-Dixie during the storm?

- a. Sweetie Pie
- b. Dunlap
- c. Miss Franny
- d. Otis

4. Which emotion does Opal feel most at the end of the novel?

- a. excitement
- b. sorrow
- c. loneliness
- d. happiness

5. Before Opal runs off to find Winn-Dixie in the storm, she tells Opal that "you can only love what you got while you got it." What does she mean by this? What does this mean to you? Do you agree?

Blank purple writing area for student response.

This is the end of *Because of Winn-Dixie* novel guide. We hope you've enjoyed this book!

© Gail Pickett

Quick Assessments for Each Section



# Digital Interactive Version in Google Slides

**VIRTUAL NOVEL GUIDE**

## Because of Winn-Dixie

reading section 4 << Click here to go back to the directions page!

### Design Your Own Candy!

Consider the qualities of the Litmus Lozenge:

- it is a candy
- it is meaningful to the inventor
- it has a tasty flavor, and an emotional flavor
- everyone who eats one can connect with the emotion in their own way
- people can describe it in many different ways

Now, design your own candy that has as many of these qualities as possible. You can create a candy that tastes any way that is meaningful to you. Once you've thought of your candy, fill out the chart to the right and upload a drawing of it.

MY NEW CANDY'S NAME:	
MY CANDY FLAVORS:	
HOW MY CANDY WILL MAKE PEOPLE FEEL:	
WHY I CREATED THIS CANDY:	A PICTURE OF MY CANDY:

Magi CORE

MacBook Air



# Teacher Instructions

This NOVEL GUIDE is designed to elevate your novel study in an engaging way for students. Students will work in their Virtual Novel Guide Notebook while reading the assigned novel. This novel guide can be used in multiple ways: independent work, partner work, small group work, or even summer reading.

This novel guide was created for the novel *Because of Winn-Dixie* and is divided into SIX sections:

1. **GETTING STARTED**: pre-reading activities
2. **READING SECTION 1**: during reading activities - Chapters 1-5
3. **READING SECTION 2**: during reading activities - Chapters 6-10
4. **READING SECTION 3**: during reading activities - Chapters 11-15
5. **READING SECTION 4**: during reading activities - Chapters 16-20
6. **FINISHING UP**: after-reading activities - Chapters 21-26

To organize this novel guide, we have divided the novel into five main reading sections. We suggest students read all chapters before completing that section of activities. The chapters are outlined above and at the start of each section.





getting started

reading section 1

reading section 2

reading section 3

reading section 4

finishing up

# Because of Winn-Dixie



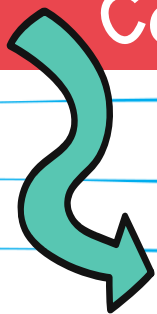


# Getting Started!

Before jumping into the novel, *Because of Winn-Dixie*, you are going to learn some important background information about the characters and setting. You will also have a chance to make some predictions!

## DIRECTIONS:

Complete each activity below.



1. Consider companionship.
2. Think about community.
3. Agree or disagree.
4. Make a prediction.



# What Is a Companion?

Scan the code to study the definition of "companion," then fill out the chart!



DEFINITION:

SYNONYMS:

KINDS OF COMPANIONS:

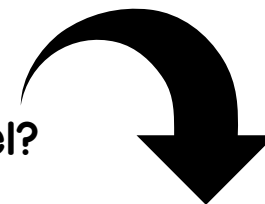
Describe what you know about the word "companion."

Do you have any companions? If so, describe one of them. What qualities do they have that make them a companion?

# Thinking About Community

Consider the words below. How are they similar?

How are they different? How do they make you feel?



COMPANION

FRIEND

COMMUNITY

FAMILY

Which word above means the most to you, and why?

Large blank pink rectangular area for writing an answer to the question above.

How is your life impacted by the ideas above?

Large blank pink rectangular area for writing an answer to the question above.

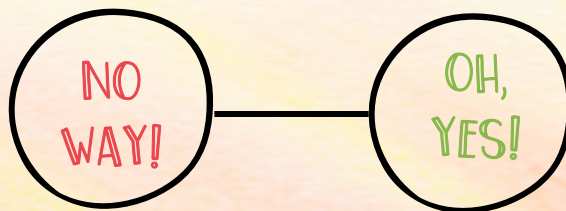


# What Do You Think?

Read each of the three statements and think about how you relate to them. Do you agree with them? Do you disagree with them? How do you know? Draw an arrow to a place on the scale that illustrates how you feel. You can be completely on one side or the other, or somewhere in between. Next, describe why you selected that place on the scale in the box below.

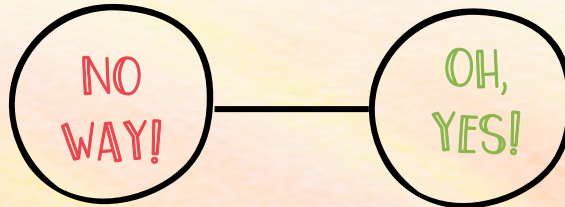
**If you find a stray dog, you must keep it.**

Explain.



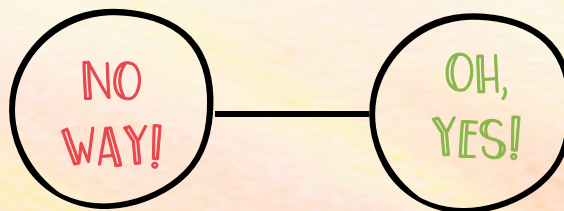
**Food can taste like emotions.**

Explain.



**Don't judge someone based on their past.**

Explain.



# Making Predictions

Consider the words in the speech bubbles: community, loneliness, sorrow, and friendship. Based on your understanding of these words and the cover of the novel, what do you think *Because of Winn-Dixie* might be about? Write your prediction below.

loneliness

community

friendship

sorrow



# Reading Section 1

getting  
started

reading  
section 1

It's time to start reading *Because of Winn-Dixie*! Be sure to read the chapters of section one listed below before starting the activities.

CHAPTER 1

CHAPTER 4

CHAPTER 2

CHAPTER 5

CHAPTER 3

After reading the chapters of section one, complete each activity below.

1. Review the vocabulary.
2. Start Opal's character tree.
3. Write a diary entry.
4. Explore Winn-Dixie.
5. Think about ten things.
6. Start the preacher's character tree.
7. Reflect on section one.
8. Show what you know!

# Vocab Review

Check out the important vocab words in the first section of *Because of Winn-Dixie*. Using a dictionary, complete the chart below. Check off each vocab word as you complete it by adding a checkmark to the small box.



Scan the code to access an online dictionary if needed.



word:

definition:

sentence:

"My daddy is a good preacher and a nice man, but sometimes it's hard for me to think about him as my daddy..." Ch. 1

word:

definition:

something rare that does not apply/fit

sentence:

word:

congregation

definition:

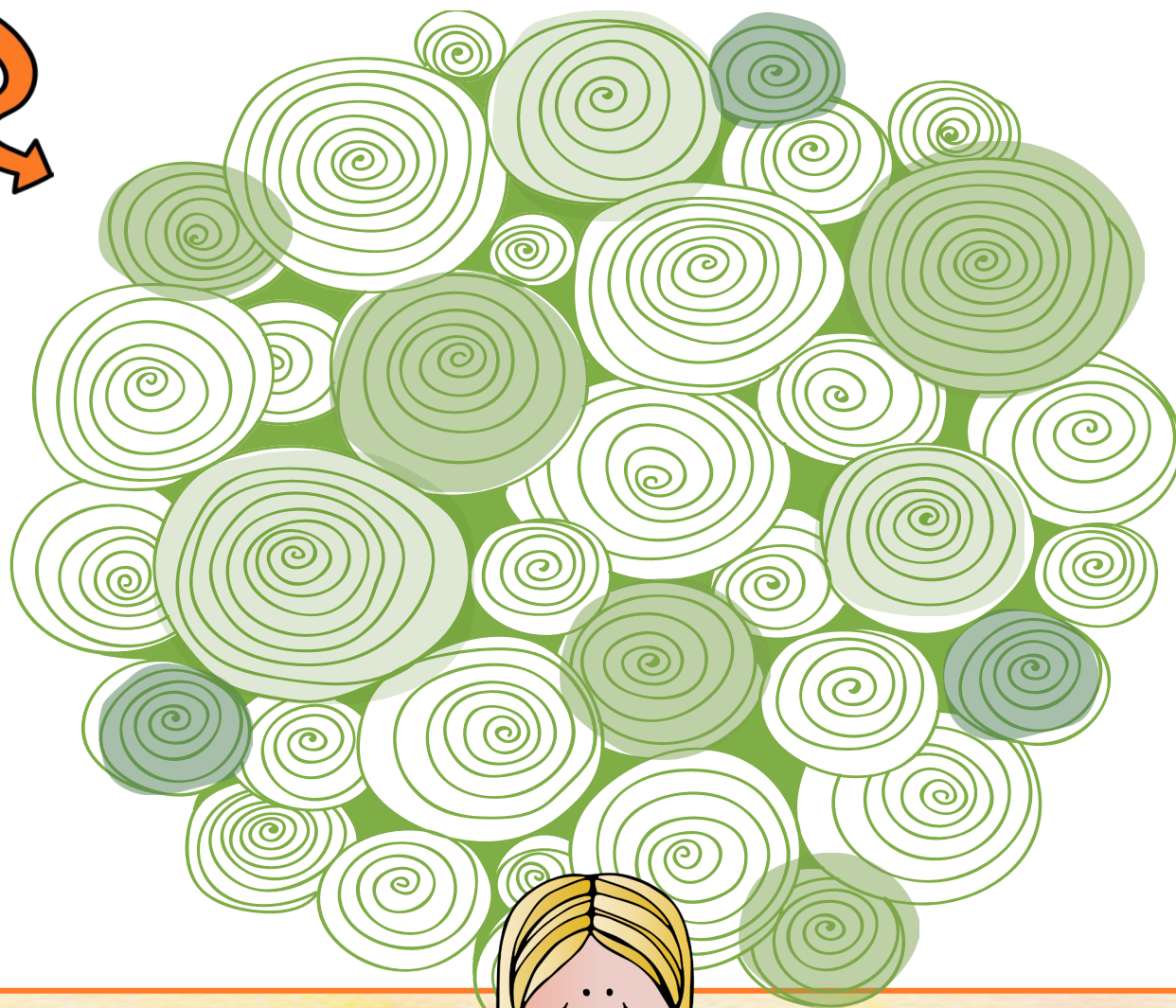
sentence:

# Character Tree: Opal

Throughout this novel guide, you will complete this character tree by gathering information and quotes from the text to describe Opal.

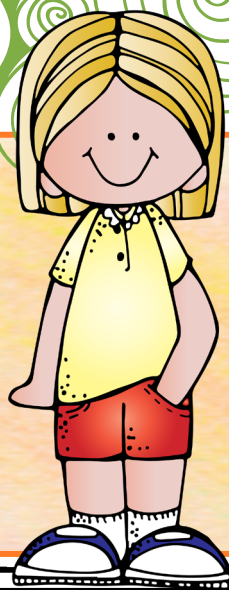
On future pages, you will be asked to think about ways in which Opal has grown or changed, and then return to this page to add that information to her character tree.

Right now, after reading section one, fill out the 3 "leaves" below about Opal. Be sure to leave space for future leaves!



2 words that describe Opal's  
personality:

1 of Opal's wonderings:





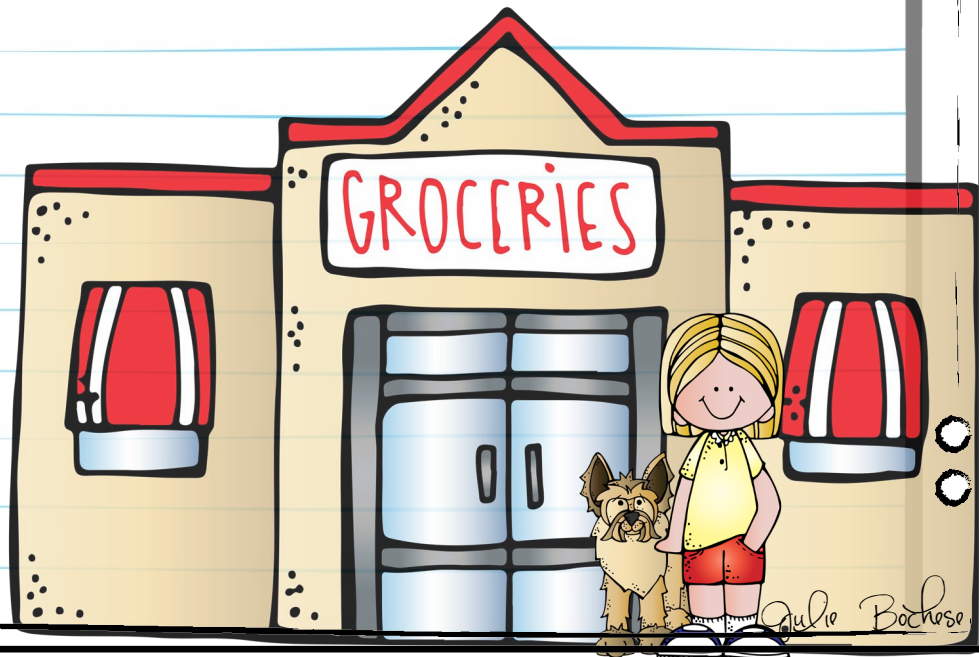
# Dear Diary

After reading section one of *Because of Winn-Dixie*, we have some ideas about how Opal feels in her new town of Naomi. We also learn how she and Winn-Dixie meet.

Write a journal entry from Opal's perspective on the day that she finds and adopts Winn-Dixie. Include specific information in the text regarding when/where/why/how and ways in which Winn-Dixie has already impacted her.

Dear Diary,

Love,  
Opal



# Winn-Dixie

Think about Winn-Dixie's character and then think of a pet that you know. Compare them in the chart below, noting specific differences and similarities that have to do with physical features, behaviors, personalities, families, and more.

Winn-Dixie





# Ten Things

In Chapter 3, Opal tells Winn-Dixie, "I want to know more about her. But I'm afraid to ask the preacher; I'm afraid he'll get mad at me." Just moments later, however, Opal asks the preacher to tell her ten things about her mama.

Why do you think Opal is afraid her dad will get mad at her?

What do you think gives Opal the courage to ask her father, even though she is scared?



# Ten Things About You

First, think about who you are. Consider your identity, your hobbies, your family, and more. Then, make a list of ten things about yourself that you think describe you as a person. Afterward, answer the question below.

1.	
2.	
3.	
4.	
5.	
6.	
7.	
8.	
9.	
10.	

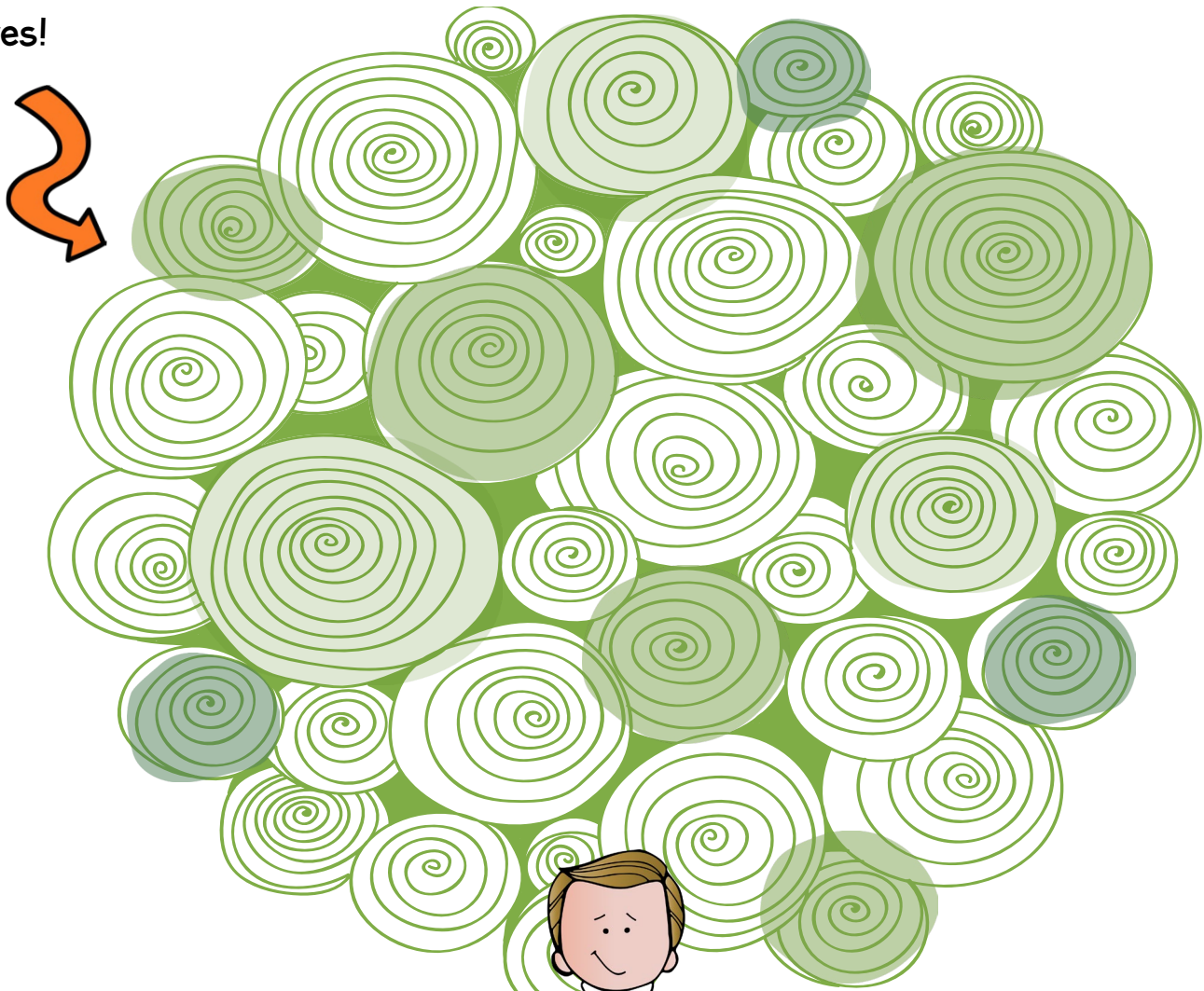


Do these ten things paint a whole picture of you? Do the ten things Opal learns paint a whole picture of her mother? Why, or why not?



# Character Tree: The Preacher

Throughout this novel guide, you will complete this character tree by gathering information and quotes from the text to describe the preacher. On future pages, you will be asked to think about ways in which he has grown or changed, and then return to this page to add that information to his tree. Right now, after reading section one, fill out the 3 "leaves" below about the preacher. Be sure to leave space for future leaves!



2 words that describe the preacher's  
personality:

1 of the preacher's fears:

# Section One Creative Reflection

Draw a picture or write a poem about your favorite part of this section. Create your reflection piece in the space to the right. Then, answer the questions below.

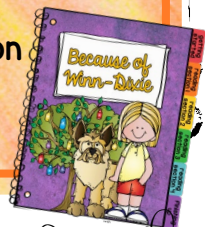


1. Which quote from the text best describes (or relates to) your favorite part of this section?
  
  
  
  
  
  
  
  
  
  
2. Why was it your favorite part of this section?

1. What does Opal name Winn-Dixie after?
  - a. The store manager he knocked over.
  - b. The grocery store where she found him.
  - c. Her best friend in her old town.
  - d. Her dad.
  
2. Why does Opal want to know ten things about her mother?
  - a. Because her birthday is on the tenth of September.
  - b. Because she is ten years old.
  - c. Because she can only remember ten things at a time.
  - d. Winn-Dixie said that ten is the perfect number.
  
3. In which of the following ways is Opal like her mother?
  - a. She's a good cook.
  - b. She is great at growing plants.
  - c. She has red hair and freckles.
  - d. She's a slow runner.
  
4. What does Winn-Dixie catch at Open Arms?
  - a. a squirrel
  - b. a rabbit
  - c. a snake
  - d. a mouse
  
5. In what ways is Winn-Dixie a special dog? Include two reasons described in the book and one that you think.



This is the end of section one. Get ready for section two by reading chapters 6-10.





# Terms of Use



## How Can I Use This Resource?

Thank you for trusting MagiCore. Our mission is to create resources that support teachers and promote student success. Please note that this resource is licensed for use by a single teacher in a classroom setting. If you need to use this resource with more than one teacher and/or across multiple classrooms, additional licenses are available at a discount. You can purchase additional licenses by visiting your TPT "Purchases" page and then selecting "Download Additional Licenses" or by contacting me at [julie@magicorelearning.com](mailto:julie@magicorelearning.com).



Good to Go



Not O.K.

- Use this resource personally or with your own children.
  - Use this resource in your own classroom with your students.
  - Provide this resource to your students to use at your instruction.
  - Print and/or copy for use in your own classroom.
  - Provide printed pages to a substitute teacher with the sole purpose of instructing your students.
  - Share with your students via a secure document portal or electronic learning platform that requires individual user verification and limits access to only the students in your own classroom (e.g. Google Classroom).
  - Review this resource with others with the sole purpose of recommending it to others for purchase, provided you share one of the links below:
- Share with others to use personally.
  - Share with others to use in another classroom.
  - Print or copy any page(s) and distribute them to other teachers or other classrooms.
  - Publish or host online in a manner where any of the material is accessible to anyone who is not a student in your own classroom, including but not limited to personal, classroom, or district websites that are accessible to the general public.
  - Use this resource commercially (e.g. Outschool).
  - Publish, sell, or otherwise distribute this product to anyone in manner inconsistent with these terms of use.

<https://magicorelearning.com/>

<https://www.teacherspayteachers.com/Store/Magicore>

# Let's Connect!

[www.magicorelearning.com](http://www.magicorelearning.com)



<https://www.teacherspayteachers.com/Store/magicore>



<https://www.facebook.com/MagiCoreLearning/>



<https://www.instagram.com/magicorelearning/>



[https://www.pinterest.com/magicorelearning/\\_shop/](https://www.pinterest.com/magicorelearning/_shop/)



[Julie@magicorelearning.com](mailto:Julie@magicorelearning.com)

Looking for more?



# Credits

