

TOKYO

The background features a light blue sky with soft white clouds. A large red circle, resembling a rising sun, is centered behind a black silhouette of a traditional Japanese pagoda. Below the pagoda, a dark red silhouette of a city skyline is visible. Several pink cherry blossoms with yellow centers are scattered around the scene, some on dark brown branches.

Social Studies



VIRTUAL field trip

EMBARK ON AN EXCITING JOURNEY TO TOKYO, JAPAN

Go on an adventure to learn
about Tokyo, Japan!

Where is Tokyo?

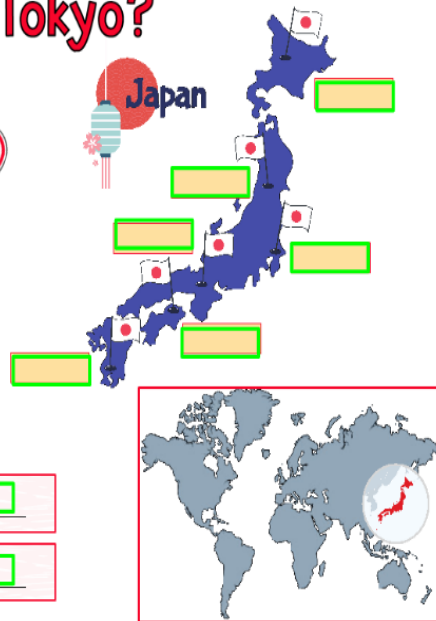
The city of Tokyo is in the country of Japan! Let's check out a map to find some more details!

Directions:

1. Click [here](#) to locate Tokyo on Google Earth!
2. Determine which of the five flags on the map of Japan (to the right) is marking the city of Tokyo. Label that flag!
3. Zoom out to see where Japan is located in the world and answer the questions below.

WHAT LARGE OCEAN IS JAPAN LOCATED IN?

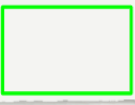
WHICH CONTINENT IS JAPAN A PART OF?



Memory Book

- Click on a season.
- Explore that season as a resident of Tokyo.
- Collect an image and paste it into the correct frame.
- Write some words or a sentence to describe the season.

WINTER



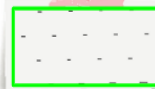
SUMMER



SPRING



FALL



INTERACTIVE SCRAPBOOK

Collect photographs as you explore the four different seasons in Tokyo.

LEARN, ENGAGE, EXPLORE THROUGH MULTIPLE FORMATS

Public Transportation in Japan

The country of Japan has one of the best public transportation systems in the world! The subways, trains, and buses are consistently on time, tidy/clean, and fast! The country worked hard to make it a good system, and they continue to find new ways to improve all forms of transportation. This is one reason why the city of Tokyo can accommodate so many people! Tokyo probably wouldn't be the largest city in the world if they had a late, dirty, slow public transportation system.

Watch the video to learn what techniques Japan uses to improve its public transportation system. As you travel through Japan watching the cherry trees blossom, it will be interesting to know more about the train you're riding! After watching the video, answer the questions.



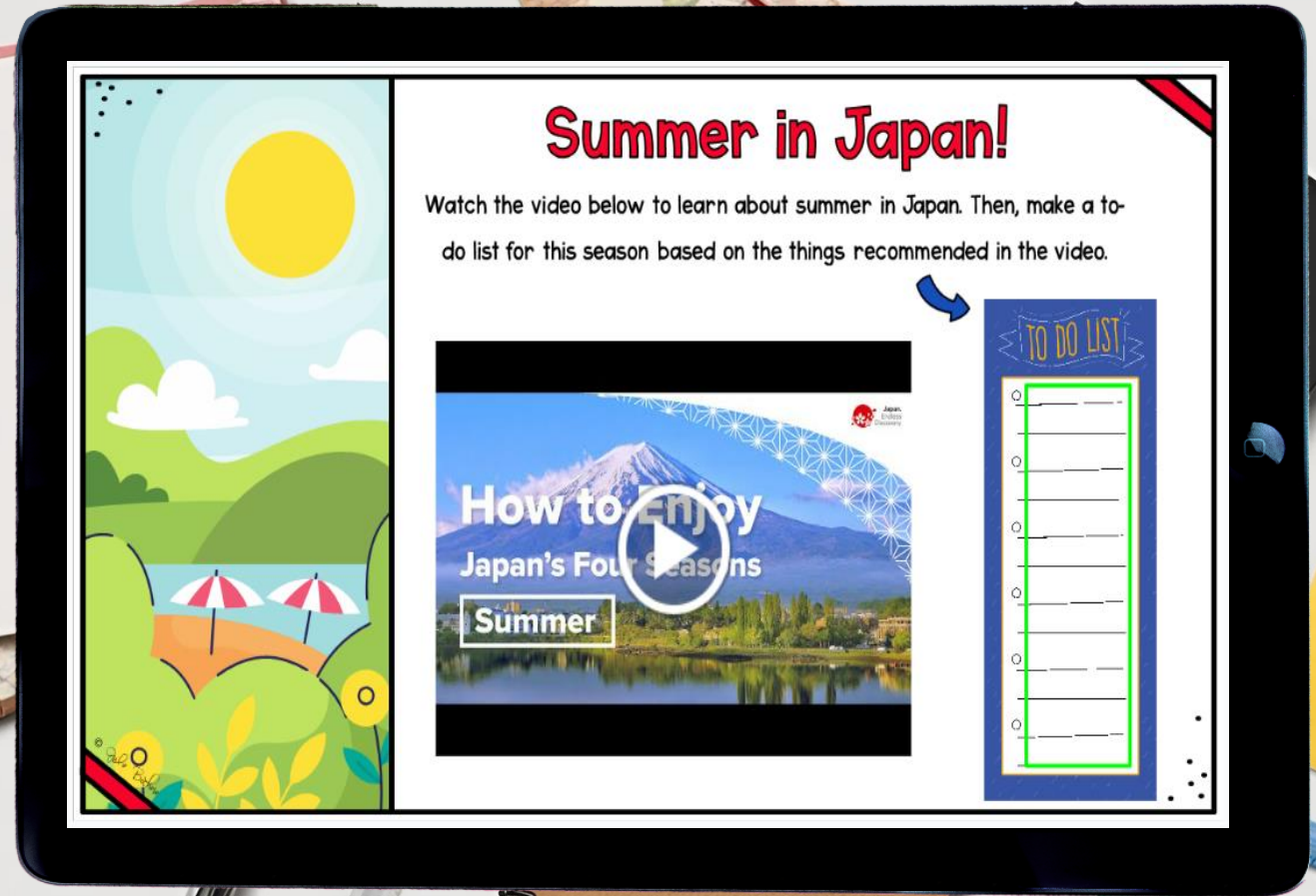
1. What did the team of train engineers look to for inspiration, and why?

2. What other things in the world are modeled after nature?



MAKES LEARNING FUN

Combines social studies and writing with multimedia for a richer, more engaging learning experience.



Leaves Changing Colors in Tokyo

As we've learned, Tokyo and all of Japan are known for their natural beauty. In autumn, as the leaves change, people visit and gather around the gorgeous colors, just as they do in the springtime! What is it that causes the leaves to change, though? Watch the video to find out!



1. In your own words, explain how the colors of the leaves "change."

2. How do you think the autumn colors compare to the spring colors in Tokyo? Which would you like to come back for?



CRITICAL THINKING SKILLS

Encourages higher level thinking skills.

Suggested Uses

- Assign in Google Classroom or SeeSaw
- Whole Class Activity
- Small groups or center
- Early Finisher
- Incentive or Fun Friday

Google Slides and SeeSaw



Looking for More?

Save with our Social Studies Bundle!

Visit Salem, MA,
The Titanic,
Washington, DC,
...and more!



Click the picture
to preview!