

1st Grade

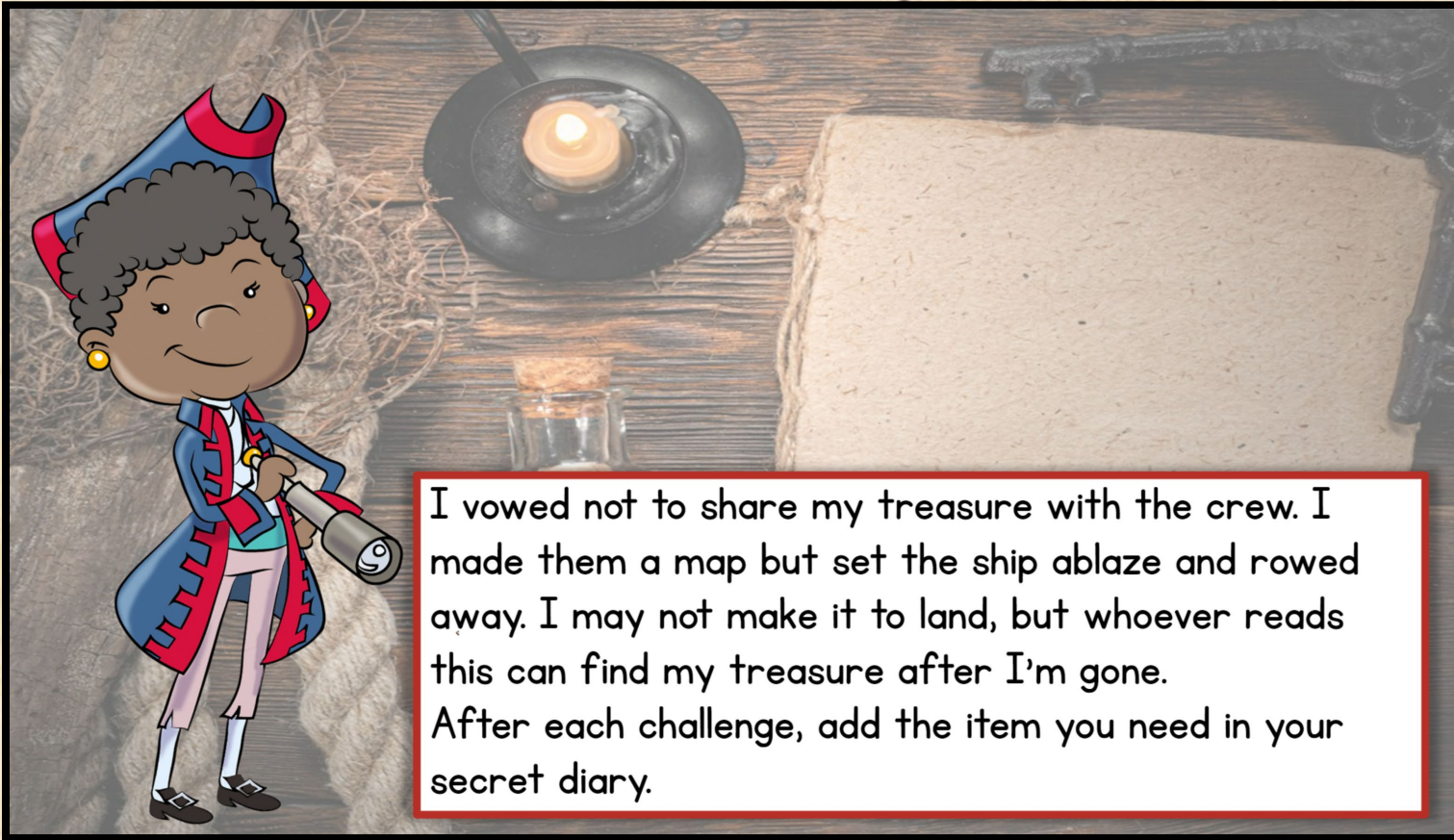
Context Clues

Pirate Treasure Escape Room



Mag
CORE

PRINTABLE • GOOGLE • WEBSCAPE™



I vowed not to share my treasure with the crew. I made them a map but set the ship ablaze and rowed away. I may not make it to land, but whoever reads this can find my treasure after I'm gone. After each challenge, add the item you need in your secret diary.

Ahoy, Mateys!

Students won't realize they are practicing Context Clues skills! They will be immersed in the storytelling and our original videos as they complete reading comprehension challenges.

Learn more! 

4 Reading Challenges

- Challenges focused on Context Clues
- Each challenge takes about 20-30 minutes
- 18 short nonfiction passages, 1 long nonfiction passage
- Multiple choice questions
- Passages in 1st Grade Text Complexity band (420L)
- Passages and questions are scaffolded

Learn more!



Challenge #2

1. Read each passage and answer the questions.
2. Use your answers to sink the



1 Use Context Clues

Hawaii is a state in the United States. Hawaii is made up of islands. The state has hundreds of islands. They are all in a small area. Hawaii is in the Pacific Ocean. The state has beautiful views. The climate is tropical. Hawaii is a popular



2 Use Context Clues

Seahorses are very interesting. They are unusual. Male seahorses carry baby seahorses. The males have a **pouch**. The baby seahorses grow in there. Sometimes they have just a few babies. Sometimes they have thousands! A seahorse egg grows for two to four weeks. The eggs grow into baby seahorses. Many eggs can **hatch** at one time. Then there are lots of new baby seahorses! 100-200 eggs can hatch.



3. What does the word *hatch* mean in the

3 Use Context Clues

Antarctica is a continent. It is the coldest continent. It is also windy. Antarctica is very dry. It is covered with ice. It is a cold desert! It only gets about 8 inches of **rain per year**. Antarctica is the world's



1 Use Context Clues

Barack Obama II was born in 1961. He was born in Hawaii. He was a senator from 1997 to 2004. He helped create many laws. In 2008, he was elected to be President of the United States. Obama is the first



2 Use Context Clues

Boom! Did you hear that thunder? Thunder is a very loud happens sometimes during a storm. It creates energy. TL

3 Use Context Clues

The giant bird sees something in the water. The water is far below him. His instincts take over. He dives down. He is flying at high speed. He can fly up to 30 miles per hour. He gets closer to the water. His **talons** go into the water. He comes up with a fish. He is holding a pink salmon. He flies up. Now he heads to land so he can eat. This isn't just any bird. It is a bald eagle!



5. What does the phrase *flying at high speed* mean in the text?

- a. flying confused
- b. flying while at
- c. flying slowly
- d. flying fast

6. What does the word *talons* mean in this text?

- a. beak
- b. claws
- c. tail
- d. fingers

4 Reading Challenges

- Themed videos integrated throughout the Escape Room to keep kids engaged.
- Students work in groups, partners, or independently.

Learn more!



1. Use Context Clues

Have you ever felt silk fabric? Silk comes from a worm. The worm is called a silkworm. It is not like a worm in the dirt. It is really a caterpillar. The history of silk started in China. Farmers grow silkworms. They use them to make silk.



The silkworm gets big. Then it makes a home. The home is a cocoon. It stays in it.

Then the silkworm changes. It becomes a moth. It can fly. People take the cocoon. The cloth is made.

1. What do silkworms like to eat the most?
 - a. grass
 - b. apple leaves
 - c. mulberry leaves
 - d. flowers
2. What does the word *cocoon* mean in the text?
 - a. a type of leaf
 - b. a home the silkworm makes
 - c. a kind of moth
 - d. a tall tree
3. What does the word *munches* most likely mean?
 - a. eats
 - b. flies
 - c. sleeps
 - d. sings

Discover the Waterfall

Find the waterfall where the treasure lies!
Collect the treasure to add to your pirate diary.



Scan the QR code or [click here](#) to view the video.



DO NOT go to the next page until you've answered all the questions!



3 Versions

- Print
- Google Slides
- Webscape™ (Our most popular experience)

Learn more!



3. Use Context Clues

Antarctica is a continent. It is the coldest continent. It is also windy. Antarctica is very dry. It is covered with ice. It is a cold desert! It only gets about 8 inches of rain **per year**. Antarctica is the world's biggest desert. It is **located** on the South Pole. No humans live on the continent full-time.



5. What does the phrase *per year* mean in the text?
- a. every year
 - b. every other year
 - c. every day

6. What does the word *located* mean in this text?
- a. lost
 - b. found
 - c. away

3. Use Context Clues




Antarctica is a continent. It is the coldest continent. It is also windy. Antarctica is very dry. It is covered with ice. It is a cold desert! It only gets about 8 inches of rain **per year**. Antarctica is the world's biggest desert. It is **located** on the South Pole. No humans live on the continent full-time.

5. What does the phrase *per year* mean in the text?
- a. every year
 - b. every other year
 - c. every day
 - d. every 10 years



Antarctica is a continent. It is the coldest continent. It is also windy. Antarctica is very dry. It is covered with ice. It is a cold desert! It only gets about 8 inches of rain **per year**. Antarctica is the world's biggest desert. It is **located** on the South Pole. No humans live on the continent full-time.



	PDF 	Google Slides 	Webscape™ 
Format Type	Printable	Digital	Digital
Device	N/A	Any Device	Any Device
Required Prep	Print & Go	Copy & Share	Zero Prep
Student Answers	Answer Directly on the Printable	Interactive Google Slides Movable	Integrated Challenge Hub
Self Correcting	Includes Answer Key	Includes Answer Key	Self Correcting
Custom Videos	QR Codes	Embedded You Tube	Embedded
Audio Readings	N/A	No Audio Readings	Contains Audio Readings
Navigation	N/A	Student Directed	Automatically Advancing
Extras	Early Finish Challenges	Movable Pieces	Interactive Animation

3 Versions

- Print
- Google Slides
- Webscape™ (Our most popular experience)

Learn more!



Print

- Cut and paste stamps for each challenge
- Easy to follow
- Optimal for group or partner work
- Recording answers on the page
- Self-checking decoder

Learn more!



Print

- OOPS! Cards for differentiation
- Certificate of completion

Learn more!



You Found the Treasure!

Ashley Walsh

(Name)

successfully completed the
ages presented by Blackbeard
found the hidden treasure.



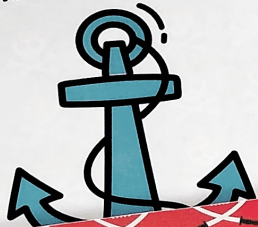
15/08

(Date)

Blackbeard

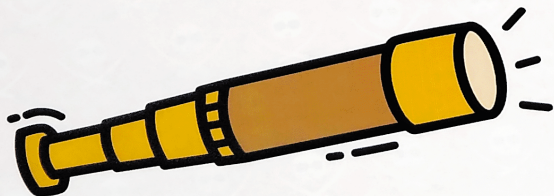
Ooops!

You forgot to swab the decks this morning.



Ooops!

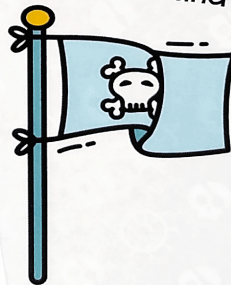
Your turn to be on the lookout. Use your
spyglass to keep watch for any enemies.



NO HELPING YOUR TEAM FOR 3
MINUTES!

Ooops!

be blindfolded and walk the plank.



YOUR EYES FOR 5
MINUTES!

Webscape™

CHALLENGE 1

1. Read each passage and answer the questions.
2. Use your answers to find the map in the sunken ship.
3. Collect the map to use on your next challenge.



- Most interactive experience
- Self correcting
- Embedded videos
- Embedded audio
- Animation
- Simple navigation

Learn more!



Webscape™

- No log ins or sign ups
- Works with any device that has an internet connection and web browser
- Zero prep! Just share the link with your students.

Learn more!



Google Slides

- Two problem per slide
- Students drag to highlight their answers

1. Use Context Clues

Barack Obama II was born in 1961. He was born in Hawaii. He was a senator from 1997 to 2004. He helped **create** many laws. In 2008, he was **elected** to be President of the United States. Obama is the first African American to be president. He was president for 8 years. Obama has done a lot for the United States. He is not president now. You cannot be president for more than 8 years.



1. What does the word *create* mean in the text?

- a. to pretend
- b. to have an idea
- c. to make
- d. to lose

2. What does the word *elected* mean in the text?

- a. to be chosen
- b. to be kicked out
- c. to lose
- d. to find something

Learn more!





Google Slides

- Engaging & educational multimedia
- 6 videos narrations about the story.

Learn more!



Looking for More?

Magi CORE DIGITAL & PRINTABLE K-1st Grade

FALL BUNDLE

Includes: PUMPKIN PATCH, HALLOWEEN AROUND THE WORLD, THANKSGIVING DAY PARADE, SCHOOLS AROUND THE WORLD, VIRTUAL Field trip, THANKSGIVING FEAST Project Based Learning, APPLE ORCHARD, DAY OF THE DEAD, VIRTUAL Field trip.

Reading Comprehension 1st Grade

ESCAPE ROOM BUNDLE

PRINTABLE • GOOGLE • WEBSCAPE™

Includes: Text Features, Compare & Contrast, Answering Questions, Jungle Safari Escape, Mission Escape.

HOLIDAY BUNDLE

Seasonal/Holiday

Includes: CHRISTMAS AROUND THE WORLD, THANKSGIVING DAY PARADE, HALLOWEEN AROUND THE WORLD, VIRTUAL Field trips.