

4.MD.A.1

RECOGNIZE & CONVERT COMMON UNITS OF MEASUREMENT


TASK CARDS





ANSWER SHEET

Name: _____ Date: _____

| Card # | Answer | Card # | Answer |
|--------|--------|--------|--------|
| 1. | | 16. | |
| 2. | | 17. | |
| 3. | | 18. | |
| 4. | | 19. | |
| 5. | | 20. | |
| 6. | | 21. | |

9 Relevant Size of Measurement Units
The racetrack is 3 km long. How many meters is this?

a. 30 m c. 3,000 m
b. 300 m d. 1,000 m

10 Relevant Size of Measurement Units
The measuring cup shows 4,000 ml of water. How many liters is this?

a. 4 L c. 400 L
b. 40 L d. 4,000 L

5 Relevant Size of Measurement Units
The jugs below contain 2 liters of water total. How many milliliters is that?

a. 20 milliliters c. 2,000 milliliters
b. 100 milliliters d. 200 milliliters

6 Relevant Size of Measurement Units
The scale shows _____

11 Relevant Size of Measurement Units
How many inches are in 5 feet?

12 Relevant Size of Measurement Units
Convert 4 _____

7 Relevant Size of Measurement Units
If one _____


★ ★ ★ ★ ★ ★ ★ ★ ★ ★


🔊 If a bike ride takes 90 minutes, how many hours and minutes is that?

1 hour 10 min 1 hour 30 min
1 hour 20 min 1 hour 15 min

▶

Relevant Size of Measurement Units



3 Relevant Size of Measurement Units
How many times heavier is one pound than one ounce?

a. 10 times c. 30 times
b. 5 times d. 16 times

5 Ways to Use Task Cards

1. Centers

2. Scoot: Pass out one card for each student. Set a timer and say, "Go!" off. Students move seats to the next card. They continue to rotate until the original seat.

3. Scavenger Hunt: Hide cards around the room. Students search for cards.

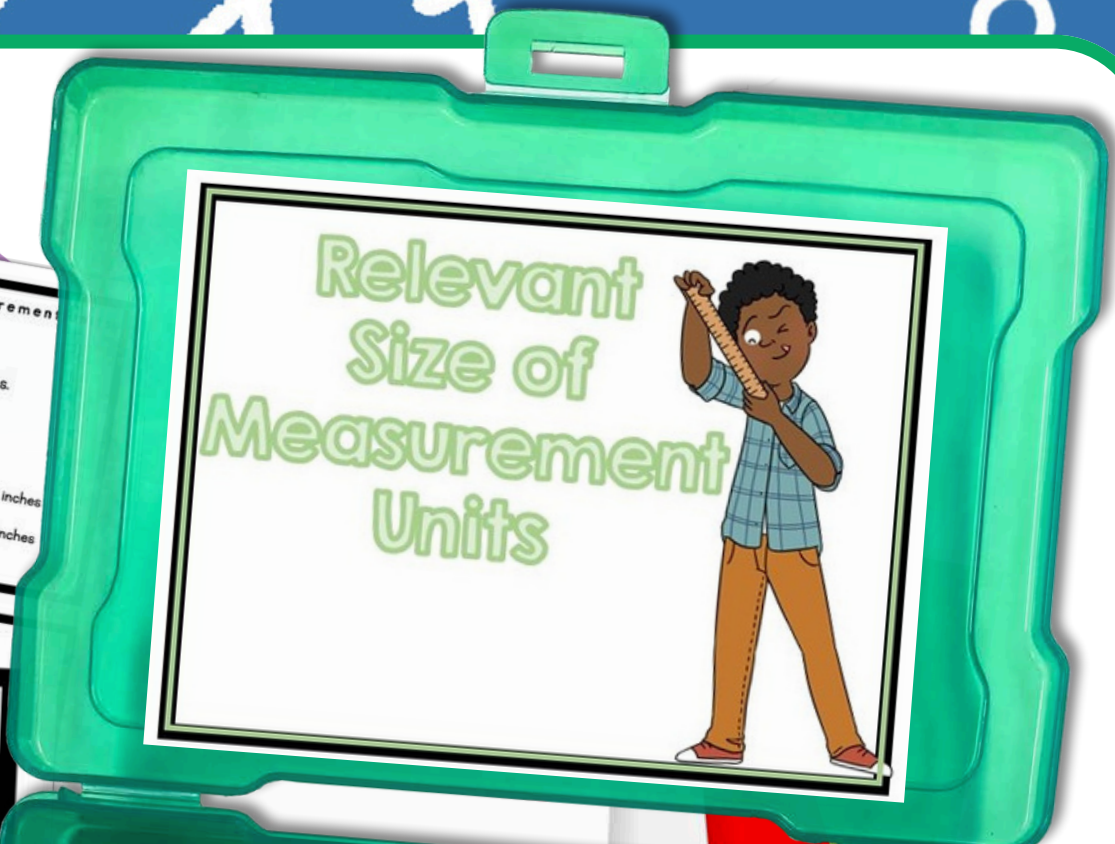
4. Jenga: Number Jenga blocks. Students stack the blocks, then take turns pulling out the corresponding number card.

Teacher displays card on the projector. Students work on the task card at the end of the lesson. Hand out a task card at the end of the lesson. Hand out a task card at the end of the lesson.



PRINTABLE AND DIGITAL

- 30 PRINT-AND-GO TASK CARDS
- READY TO USE FOR CENTERS



ANSWER SHEET

Name: _____ Date: _____

| Card # | Answer | Card # | Answer |
|--------|--------|--------|--------|
| 1. | | 16. | |
| 2. | | 17. | |
| | | 18. | |
| | | 19. | |
| | | 20. | |
| | | 21. | |
| | | 22. | |
| | | 23. | |
| | | 24. | |
| | | 25. | |
| | | 26. | |
| | | 27. | |
| | | 28. | |
| | | 29. | |
| | | 30. | |

1 Relevant Size of Measurement Units

How many times longer is 1 foot than 1 inch?

a. 12 times c. 20 times
b. 10 times d. 5 times

2 Relevant Size of Measurement Units

How many times longer is 1 hour than 1 minute?

a. 30 times c. 100 times
b. 60 times d. 10 times

3 Relevant Size of Measurement Units

How many times heavier is one pound than one ounce?

a. 10 times c. 30 times
b. 5 times d. 16 times

4 Relevant Size of Measurement Units

How many inches long is a 2-foot snake?

a. 24 inches c. 16 inches
b. 10 inches d. 20 inches

Ways to Use Task Cards

These task cards are scaffolded to increase in difficulty. Cards 1-10 include visual models. Cards 11-20 include equations without visual models. Cards 21-30 are word problems.

- Centers
- Scoot: Pass out one card for each student. Set a timer and say, "Scoot!" when the timer goes off. Students move seats to the next card. They continue to rotate until they are back at their original seat.
- Scavenger Hunt: Hide cards around the room. Students search for cards and answer them.
- Jenga: Number Jenga blocks. Students stack the blocks, then take turns pulling blocks. Students answer the corresponding number card.
- Whole class practice: Teacher displays card on the projector. Students answer on mini white boards.
- Exit Tickets: Give each student a task card at the end of the lesson. Have them answer on a sticky note.



© Julie Bochese

SELF CORRECTING, INCLUDES REPORTING CERTIFICATE

17 Relevant Size of Measurement Units
If a bike ride takes 90 minutes, how many hours and minutes is that?
a. 1 hour 10 min c. 1 hour 30 min
b. 1 hour 20 min d. 1 hour 15 min

18 Relevant Size of Measurement Units
A watermelon weighs 25 kg, how many grams is that?
a. 250 g c. 2500 g
b. 2500 g d. 25 g

25 Relevant Size of Measurement Units
A jug holds 1.5 liters of juice. How many milliliters is this?

26 Relevant Size of Measurement Units
Sparky weighs 20 pounds. How many ounces does Sparky weigh?
a. 200 ounces c. 280 ounces
b. 320 ounces d. 2,000 ounces

27 Relevant Size of Measurement Units
A clock shows 7:45 AM. How many minutes have passed since 6:30 AM?
a. 65 minutes c. 80 minutes
b. 90 minutes d. 75 minutes

100%

11

11

★ ★ ★ ★ ★ ★ ★ ★ ★ ★

🔊 If a bottle contains 2.5 liters of water, how many milliliters is that?

2,500 mL 25 mL

250 mL 0.25 mL

11

➔



SHUFFLES CARDS, SO STUDENTS CAN PRACTICE MORE THAN ONCE

21 Relevant Size of Measurement Units
Emily is 4 feet tall. How many inches tall is she?

22 Relevant Size of Measurement Units
A baker uses 250 grams of flour for one cake. How many grams of flour does he need for 8 cakes?

20 Relevant Size of Measurement Units
The measuring cup shows 4,000 ml of water. How many liters is this?

Measurement Units
feet to inches.

- c. 40 inches
- d. 30 inches

f Measurement

hours and 45 minutes is the

ANSWER SHEET

Name: _____ Date: _____

| Card # | Answer | Card # |
|--------|--------|--------|
| 1. | | 16. |
| 2. | | 17. |
| 3. | | 18. |
| 4. | | 19. |
| | | 20. |

14 Relevant Size of Measurement Units

If a bottle contains 2.5 liters of water, how many milliliters is that?

- a. 2,500 mL
- b. 250 mL
- c. 25 mL
- d. 0.25 mL

15.

100%

10 stars

INCORRECT

The correct answer is 90 minutes.

CONTINUE

45 minutes 90 minutes

© Julie B



STANDARDS ALIGNED

7 Relevant Size of Measurement Units

If one pound is 16 ounces, how many ounces are the 3 1-pound boxes below?



- a. 45 ounces
- b. 50 ounces
- c. 48 ounces
- d. 16 ounces

24 Relevant Size of Measurement Units

A runner takes 2 hours and 30 minutes to finish a marathon. How many minutes is this?

- a. 150 minutes
- b. 125 minutes
- c. 80 minutes
- d. 230 minutes

5 Relevant Size of Measurement Units

The jugs below contain 2 liters of water total. How many milliliters is that?



- a. 20 milliliters
- b. 100 milliliters
- c. 2,000 milliliters
- d. 200 milliliters

27 Relevant Size of Measurement Units

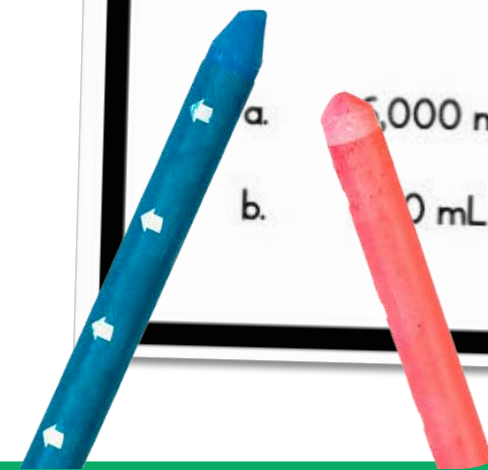
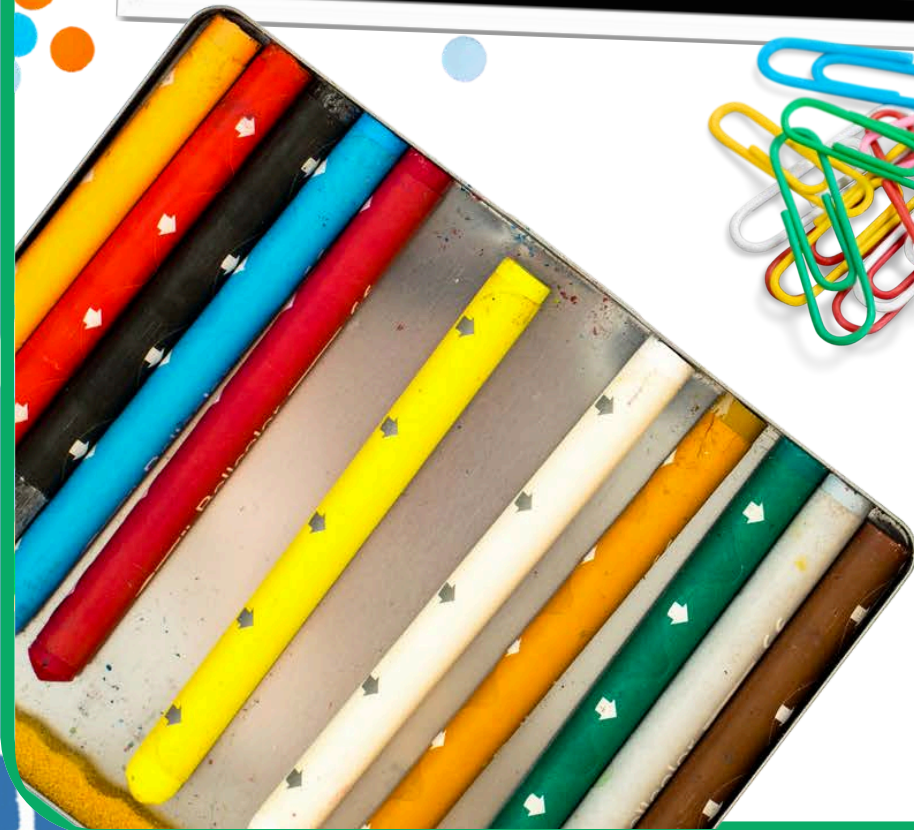
Lucy buys 3 packs of water bottles. Each pack contains 2 liters of water. How many milliliters of water does she have?

- a. 5,000 mL
- b. 6,000 mL
- c. 3,000 mL
- d. 2,000 mL

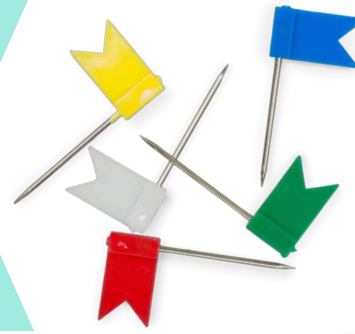
13 Relevant Size of Measurement Units

How many seconds are in 3 minutes?

- a. 30 seconds
- b. 300 seconds



USE OVER AND OVER FOR CENTERS, GAMES, AND REVIEW



ANSWER SHEET

ANSWER SHEET

Name: _____ Date: _____

Name: _____ Date: _____

| Card # | Answer | Card # |
|--------|--------|--------|
| 1. | | 16. |
| 2. | | 17. |
| 3. | | 18. |
| 4. | | 19. |
| 5. | | 20. |
| 6. | | 21. |
| 7. | | 22. |
| 8. | | |

9 Relevant Size of Measurement Units
The racetrack is 3 km long. How many meters is this?

a. 30 m c. 3,000 m
b. 300 m d. 1,000 m

10 Relevant Size of Measurement Units
The measuring cup shows 4,000 ml of water. How many liters is this?

a. 4 L c. 400 L
b. 40 L d. 4,000 L

14 Relevant Size of Measurement Units
If a bottle contains 2.5 liters of water, how many milliliters is that?

6 Relevant Size of Measurement Units
The scale shows that a watermelon is 3 kg. How many grams is this?

a. 3,000 g c. 3 g
b. 300 g d. 30 g

8 Relevant Size of Measurement Units
The clocks show 1 hour and 30 minutes have passed. How many minutes is 1 hour and 30 minutes?

a. 60 minutes c. 100 minutes
b. 45 minutes d. 90 minutes

3 Relevant Size of Measurement Units
How many times heavier is one pound than one ounce?

a. 10 times
b. 5 times

11 Relevant Size of Measurement Units
How many inches are in 5 feet?

a. 60 inches c. 30 inches
b. 50 inches d. 10 inches

12 Relevant Size of Measurement Units
Convert 4 kilograms to grams.

a. 40 grams c. 40,000 grams
b. 400 grams d. 0.4 grams

Measurement Challenge

Container A holds 2,000 milliliters of water
Container B holds 1,500 milliliters of water
Container C holds 3,250 milliliters of water

What is the total amount of water in milliliters across all three containers?

